

Updated: September 2024

SanMar

Web Services Integration

Product Information – Inventory – Pricing – Invoicing

SanMar Web Services API Overview

The SanMar API is a suite of tools that will allow you to retrieve SanMar-related information electronically, including product pricing, inventory, order shipment notifications, invoices, and package slip details. SanMar currently offers proprietary API methods and PromoStandards API methods for customers who need extra flexibility. As our services run in real-time, details can be retrieved so that your system is up to date with the latest SanMar offerings. Because our servers are being leveraged for the API methods, your application will require less data storage. All API services offered are free to use for SanMar customers.

You can utilize the SanMar API in multiple ways, including invoice retrieval for your accounting needs, extracting real-time product inventory to keep track of SanMar product stock, or getting our latest product details for use in an e-commerce web application.

The API is an XML-based SOAP API, so knowledge of the SOAP protocol and how to program with it is necessary from a development standpoint. API calls are made in XML format, sent to our servers, and in return our servers will send an XML response back to your system with the requested details. As the SOAP protocol is agnostic, you or a developer can work with any programming language of your choice. For each API service, we offer production endpoints for real-time access and EDEV endpoints for testing purposes. To request access to our API, please e-mail sanmarintegrations@sanmar.com and a representative will contact you.

Table of Contents

Authentication	6
Make a SOAP Call	7
Make a SOAP Call Using SoapUI.....	8
Errors	10
Web Service Data Usage	12
SanMar Integration Best Practices.....	13
Brand Restrictions	17
SanMar Web Service PHP Quick Start Guide.....	19
SanMar Standard Product Information Services	25
PromoStandards - Product Data Services V2.0.0	40
PromoStandards - Media Content Services V1.1.0.....	54
SanMar Product Inventory Service	60
PromoStandards – Inventory Services V2.0.0	66
SanMar Pricing Service	76
PromoStandards - Pricing and Configuration Services	80

SanMar Web Services Integration Guide v22.7

PromoStandards - Order Shipment Notification Service V1.0.0.....	87
PromoStandards Product Order Status Service V2.0.0	92
SanMar Standard Invoicing Services	102
PromoStandards Invoice Services V1.0.0	126
SanMar License Plate Number Service.....	132
Change Log.....	136

SanMar Web Services User Guide

Get Started

You will need to be a SanMar customer and complete an integration agreement before you can utilize the SanMar API. You will use your SanMar.com web user credentials for authentication.

Step 1: Contact the integration team at sanmarintegrations@sanmar.com to request access to the SanMar Web Services API. The integration team will send out an Adobe e-sign agreement for you to complete. Once you have submitted your completed agreement the integration team will e-mail you confirmation and access to the API.

Step 2: Create a web user at www.sanmar.com/signup/webuser. The username and password created will be used for authentication of the Web Service API methods.

Step 3: Locate the WSDL that fits your needs. You will find a list of WSDL's by category in the table of contents area of this guide. Each WSDL will have a designated section with the required parameters and output.

Step 4: Testing: SanMar offers an Environment for testing. This environment requires different credentials provided upon request, and product information / availability may not always match up to our Live Production Environment. We recommend Product data testing be conducted using the Production Environment WSDL / Credentials. Purchase order testing is required in our EDEV environment prior to going live in Production in most instances. If you would like access to our EDEV Environment for testing, please reach out to sanmarintegrations@sanmar.com. **Please Note: This environment is used for testing and process improvement and may be unavailable during internal updates from time to time.**

Authentication

SanMar’s standard production web service calls require authentication with a SanMar customer number, SanMar.com username, and SanMar.com password. SanMar’s PromoStandards web service calls require authentication with a SanMar.com username and SanMar.com password. You can create production SanMar.com credentials at the following location: <https://www.sanmar.com/signup/webuser>.

To test the EDEV calls, please contact sanmarintegrations@sanmar.com with your account number and reason for your EDEV Request. A member of our support staff will contact you with further instructions.

Please Note: This environment is used for testing and process improvement and may be unavailable during internal updates from time to time.

Authentication for the SanMar Standard Web Service calls

Field	Required	Type	Description
SanMarCustomerNumber	Yes	INT	SanMar Customer Number
SanMarUserName	Yes	STRING	SanMar.com Username
SanMarUserPassword	Yes	STRING	SanMar.com Password

Please Note: Inventory and invoice services present exceptions to the basic authentication parameters which are explained within the description of the services.

Authentication for PromoStandards Web Service calls

Field	Required	Type	Description
id	Yes	STRING	SanMar.com Username
password	Yes	STRING	SanMar.com Password

Authentication Responses

Field	Type	Notes
errorOccurred	BOOLEAN	true or false - Indicates if an error has occurred
message	STRING	If the errorOccurred = false , no message is returned If the errorOccurred = true , the message returned is "ERROR: User authenticating failed"

Make a SOAP Call

The following section demonstrates how to make a SOAP API call using the GetProductSellable method of the PromoStandards Product Data Service WSDL. This method returns a list of Product Ids and Part Ids based on their availability to sell. You can use tools such as Postman or SoapUI to make a SOAP API call.

PromoStandards Product Data Service WSDL:

<https://ws.sanmar.com:8080/promostandards/ProductDataServiceBinding?wsdl>

Authentication is provided in the id (SanMar.com username) and password (SanMar.com password) XML sections. The required fields for this call include wsVersion (PromoStandards Version), productId (SanMar style number), and isSellable (true).

```
<ns:GetProductSellableRequest>
  <shar:wsVersion>1.0.0</shar:wsVersion>
  <shar:id> SanMarUsername </shar:id>
  <shar:password> SanMarPassword</shar:password>
  <shar:productId>LOG105</shar:productId>
  <shar:isSellable>true</shar:isSellable>
</ns:GetProductSellableRequest>
```

The response shows the productId (SanMar style number) and partId (unique key) for the requested details:

```
<ProductSellable>
  <ns2:productId>LOG105</ns2:productId>
  <ns2:partId>583922</ns2:partId>
</ProductSellable>
```

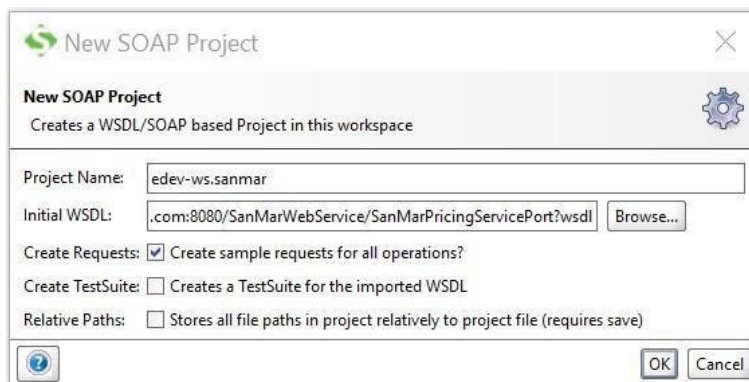
Make a SOAP Call Using SoapUI

The following demonstrates how to use the SoapUI tool to test the EDEV getPricing method.

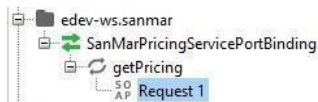
Step 1: Download and install SoapUI: <https://www.soapui.org/downloads/soapui/source-forge.html>

Step 2: Click on **File** → **New Soap Project**

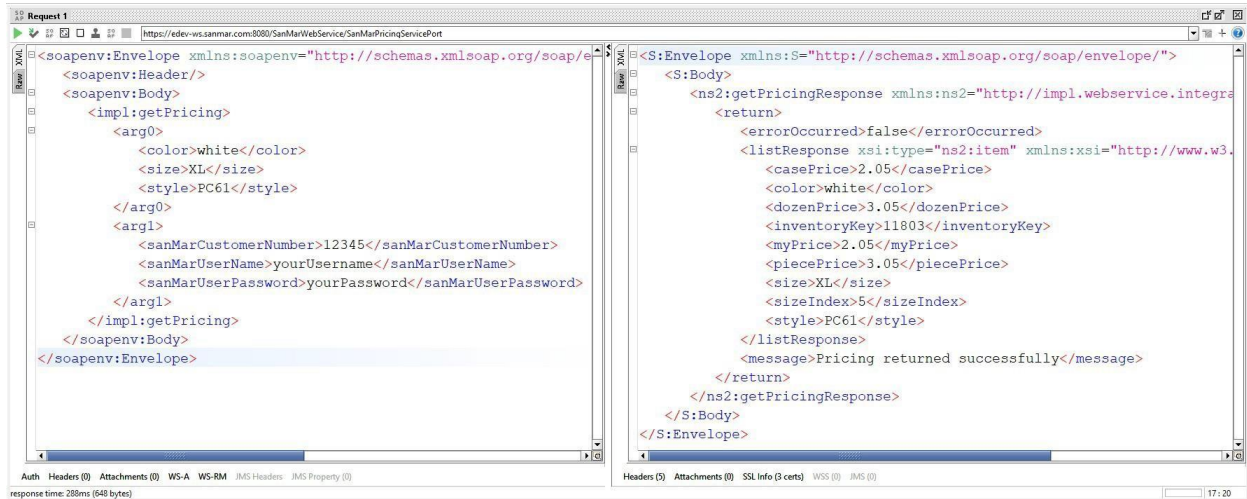
Step 3: Copy the following EDEV WSDL link and paste it to the **Initial WSDL** field. (<https://edev-ws.sanmar.com:8080/SanMarWebService/SanMarPricingServicePort?wsdl>). This will auto-populate the project name. Click **OK**.



Step 4: In the schema list, click on the + sign next to **getPricing**, and then double-click on **Request1**. The XML schema parameters will populate on the right panel.



Step 5: Fill out the XML parameters for **style (pc61)**, **color (White)**, **size (XL)**, **SanMarCustomerNumber**, **SanMarUserName**, and **SanMarUserPassword**. Click the **Green Arrow** button on the top bar to execute the call. The XML response will populate on the right side of the request.



Please be advised that since our EDEV environment is for testing purposes only, products, pricing, and inventory may not match production. These items can be retrieved safely in production as they are not making any modifications.

Errors

The following list the most common errors for both SanMar’s standard and PromoStandards API calls.

SanMar Standard Web Service Errors

Error Message	Description
Invalid Style + Color + Size specified.	Either an invalid style, SanMar mainframe color, or size was used in the request. Valid SanMar style numbers, mainframe colors, and sizes can be obtained from the SanMar_SDL_N.csv file at the following location: https://www.sanmar.com/resources/electronicintegration/sanmardatalibrary
User authentication failed.	Invalid customer number, username, or password. You can reset a SanMar.com username or password by navigating to SanMar.com and clicking on ‘Forgot Username or Password’.
Invalid warehouse specified	An incorrect warehouse number was used in the request. The following list shows SanMar’s warehouse numbers and locations: <ul style="list-style-type: none"> 1 Seattle, WA 2 Cincinnati, OH 3 Dallas, TX 4 Reno, NV 5 Robbinsville, NJ 6 Jacksonville, FL 7 Minneapolis, MN 12 Phoenix, AZ 31 Richmond, VA

PromoStandards Web Service Errors

Code	Description
100	ID (customerID) not found
104	This account is unauthorized to use this service. Please contact the service provider
105	Authentication Credentials failed
110	Authentication Credentials required
115	wsVersion not found
120	The following field(s) are required [Comma Delimited field names]
125	Not Supported: [details]
130	Product Id not found
135	Product color not found
140	Part Id not found
145	Part color not found
150	Part size not found
155	Invalid Date Format
160	No Results Found
200	Product Data not found
300	queryType not found
301	Reference Number not found – Purchase Order or Invoice Number not found (The purchase order must be shipped and invoiced in our system)
302	shipmentDateTimeStamp is incorrect or is an invalid date range
303	Input date should not be older than 7 Days
999	General Error – Contact the System Service Provider

Web Service Data Usage

SanMar currently does not have hard limits when calling our API. However, we do advise that you use discretion.

When using the SanMar standard inventory and pricing services, it is vital that your system pulls data for a select number of items and avoids making thousands of requests daily. We recommend using the PromoStandards inventory and pricing methods for frequent data pulls.

To test product information, inventory, and pricing, we recommend using the production WSDLs to avoid inconsistencies and the lack of up-to-date data in our lower environment.

Web Service Connectivity Challenges

If you experience a timeout when attempting to view the WSDL XML in a browser, then there may be a firewall or service issue. If you cannot ping our IP address (63.251.12.134), then there could be a block in your software/hardware firewall, or port 8080 could be closed on your web server. You may need to reconfigure your firewall, or open port 8080 to inbound and outbound traffic with your web server's host. If you have tried these options and you are still experiencing a timeout, please contact the integrations team at sanmarintegrations@sanmar.com for further troubleshooting.

SanMar Integration Best Practices

The following list contains best practices for our top API calls. Following these best practices can lead to better reliability of our API and help reduce excessive calls.

Invoicing

We invoice once per day after 9 p.m. Pacific Time for orders shipped that day. We recommend that you delay pulling invoice data by one extra day. For example, if an order is placed on 1/27, you would wait until 1/28 to pull the invoice data from our API. Doing this ensures that invoicing processes have been completed and data is available. If you are using the PromoStandards GetInvoices API method, please do so after 3 p.m. Pacific Time.

The Daily Invoice File, which is generated once a day at 6 a.m. Pacific Time on our ftp server, will have details for all orders invoiced the day prior. This file will share the same data as our invoicing calls. Please email sanmarintegrations@sanmar.com for Daily Invoice File and our FTP server requests.

Please Note: If you are pulling invoices by reference number, then one to two API calls per day should suffice. There is no need to make multiple calls to retrieve invoices for a specific order.

Invoicing Pull Frequency	Best Option	Alternative Option
Once a day after 3 p.m.	Daily Invoice File	PromoStandards Invoice Service V1.0.0 or SanMar Standard Invoice Service

Inventory

If you use the sanmar_dip.txt file for tracking base inventory information, then please be advised that this file includes discontinued products. Discontinued items in this file will show a quantity of zero. All styles and sizes for a specific color will continue to be listed on the file if there are at least 12 items left in any size for the product that is discontinued.

Use the below columns/values in the sanmar_dip.txt file to determine if you need to exclude data or stop API calls:

- discontinued_code = S
- quantity = 0

Please Note: There is the potential that some inventory can come in as a return of a discontinued item. If the discontinued item is available when the next sanmar_dip.txt file is generated, then the zero values could increase. In this scenario, it is okay to start re-checking the inventory for this item.

Inventory Pull Recommendations

The sanmar_dip.txt file is updated hourly and the best resource for up-to-date inventory. We advise using one of the recommendations below based on your use case.

Inventory Pull Frequency	Best Option	Alternative Option
One time per day of our full or partial catalog	sanmar_dip.txt / epdd.csv	PromoStandards Inventory Services v2.0.0 or SanMar Product Inventory Service (at Product or Style level = 3000 API calls)
Two - Three times per day of our full or partial catalog	sanmar_dip.txt	PromoStandards Inventory Services v2.0.0 or SanMar Product Inventory Service (at Product or Style level = 3000 API calls per occurrence)
Four or more times per day of our full catalog	sanmar_dip.txt	
Live inventory check at the time of ordering	PromoStandards Inventory Services v2.0.0	SanMar Standard Product Inventory Service.

Pricing

Pricing for SanMar products is updated one – two times per year. This includes MSRP, case price, and customer negotiated pricing. Sale pricing is updated every Monday and Wednesday.

For pricing retrieval, we recommend using the sanmar_dip.txt file. This file is updated hourly and will have piece, case, and sales pricing. For sales pricing, we advise pulling this file on Mondays and Wednesdays. For any other pricing, we recommend pulling once per month.

Pricing Tier	Pricing Pull Frequency	Best Option	Alternative Option
Sales Pricing	One pull on Mondays and Wednesdays	sanmar_dip.txt	SanMar Standard Pricing Service at the style number level, SanMar Standard Product Service at the style number level
Case Pricing	Once per month	sanmar_dip.txt / Sanmar_epdd.csv	PromoStandards Pricing and Configuration Service at the ProductID level, SanMar Standard Pricing Service at the style number level, SanMar Standard Product Service at the style number level
Customer Negotiated Pricing	Once per month	Incentive Pricing File / Daily Pricing File	PromoStandards Pricing and Configuration Service at the ProductID level, or the SanMar Standard Pricing Service at the style number level
MSRP	Once per month	Sanmar_epdd.csv	PromoStandards Pricing and Configuration Service at the ProductID level

Order Status

We recommend using the PromoStandards Order Status V2.0.0 service to retrieve order status no more than three times daily. Please wait two hours after your purchase order has been placed to check the status.

If the returned status shows a 'Complete' or 'Canceled' return at the order header level you may cease calling that PO. No further updates will be provided.

Order Status Pull Frequency	Best Option	Error Handling
One – Three times per day	PromoStandards Order Status V2.0.0 service	If you receive a 301 error, please hold off on checking order status for at least 24 hours. If you receive a 301 error after 48 hours, then this would mean your order may not have made it into the system. You should flag these for internal review and contact your Account Executive if you have questions. Please Note: You should stop using the Order Status service until you have resolved the issue.

Order Shipment Notification

We recommend that you use the Daily Status File through our FTP server to obtain shipment notifications for your orders. The status file is created nightly for all orders shipped that day.

Alternatively, you can use the PromoStandards Order Shipment Notification Service - V1.0.0 to retrieve your shipment notifications. We recommend using this call no more than three times per day.

Order Shipment Notification Pull Frequency	Best Option	Alternate Option	Error Handling
One – Three times per day	Daily Status File	PromoStandards Order Shipment Notification Service - V1.0.0	If you receive a 301 error, please hold off on checking order status for at least 24 hours. If you receive a 301 error after 48 hours, then this would mean your order may not have made it into the system. You should flag these for internal review and contact your Account Executive if you have questions. Please Note: You should stop using the Order Status service until you have resolved the issue.

Product Data

If your goal is to update the entire catalog, we recommend using the `sanmar_dip.txt` file or the EPDD/SDL file on our FTP server once a month. The next best option would be to use our Standard Product Data service at the style level or the PromoStandards Product Data service at the productid (style) level. Using these services at the style/productid level instead of the SKU level (style/color/size) can prevent excessive API calls to our servers.

For a one-time load of the entire SanMar catalog, you can use the `getProductBulkInfo` method to generate a bulk file in the SanMarPI folder on our FTP server. For future product iterations, you can use the `DeltaInfo` method to generate a delta file in the SanMarPI folder on our FTP server. You can also use the PromoStandards product data service at the style level to retrieve iterative product updates.

For media consumption through the PromoStandards `getMediaContent` function, we recommend pulling data at the productid (style) level as opposed to the partid (unique key) level. Pulling media at the productid level will retrieve images for each variant under the requested style and reduce the number of API calls to our servers.

Brand Restrictions

The following brands are prohibited from being sold without embellishment on any third party or direct to consumer website, including Amazon, eBay, and Craigslist:

Brooks Brothers	Eddie Bauer	OGIO	Tommy Bahama
Carhartt	New Era	The North Face	TravisMathew
Cotopaxi	Nike		

Map Pricing

All customers must adhere to our Minimum Advertised Pricing (MAP) policy. Per our sales policy, customers may not advertise or promote products at discounts greater than 10% off MSRP or SanMar promotional pricing for retail items or 20% for our private label brands. Customers may not advertise any discount on bags by OGIO.

MAP = 10% OFF MSRP		MAP = 20% OFF MSRP	MAP = MSRP	No MAP
Alternative Apparel	Outdoor Research	AllMade	Carhartt	Anvil
Brooks Brothers	Red House	CornerStone	Nike Bags	Bella+Canvas
Bulwark	Red Kap	District	Tommy Bahama	Comfort Colors
Champion	Russell Outdoors	Mercer+Mettle		Fruit of the Loom
Cotopaxi	Spacecraft	Port & Company		Gildan
Eddie Bauer	tentree	Port Authority		Hanes
New Era	The North Face	Sport Tek		Jerzees
Nike	Travis Mathew	Volunteer Knitwear		Next Level
OGIO	WonderWink			Rabbit Skins

Global Trade Item Numbers (GTIN)

GTIN's for the following brands are available in the **SanMar_SDL_N.csv** and **SanMar_EPDD.csv** files on our FTP server:

Allmade	Champion	Hanes	Port Authority	tentree
Alternative	Comfort Colors	Jerzees	Precious Cargo	The North Face
American Apparel	Cornerstone	Mercer+Mettle	Rabbit Skins	Tommy Bahama
Anvil	Cotopaxi	Next Level	Red House	TravisMathew
Bella+Canvas	District	Nike	Red Kap	Volunteer Knitwear
Brooks Brothers	Eddie Bauer	Ogio	Russel Outdoors	Wonderwink
Bulwark	Fruit of the Loom	Outdoor Research	Spacecraft	
Carhartt	Gildan	Port & Co	Sporttek	

SanMar Web Service PHP Quick Start Guide

Overview: The SanMar Web Service API is a SOAP-based API that allows systems to receive SanMar-related information electronically. The SanMar Product Information Web Service provides real-time access to SanMar's product data, including pricing, descriptions, and images. This quick start guide will walk you through the steps to create a simple PHP application to display the product information XML response for a SanMar style/color/size combination in a browser.

Prerequisites:

Obtain SanMar Web Services Access

You will need to obtain access to SanMar's Web Service before you can use it.

Contact sanmarintegrations@Sanmar.com to request access. The SanMar integration team will send you an e-sign agreement to fill out. Upon completion, it will take the integration team 24-48 hours to set up your integration account.

SanMar Product Information WSDL

You will be using the **getProductInfoByStyleColorSize** method from the following WSDL:

<https://ws.sanmar.com:8080/SanMarWebService/SanMarProductInfoServicePort?wsdl>

The **getProductInfoByStyleColorSize** method will allow you to retrieve product details back based on a style/color/size request.

XAMPP

You will need to install the latest version of XAMPP. The XAMPP download will come bundled with the newest versions of PHP and Apache Server.

Your Favorite IDE

Visual Studio Code has been used for the code example. However, you can use any IDE.

Step 1: Before jumping into the code, review the XML request and response for the **getProductInfoByStyleColorSize** method using style: pc61, color: natural, and size: small (s). The XML request below takes six parameters. You will enter the product parameters between the <arg0> tags: **color**, **size**, and **style**. Between the <arg1> tags, you will enter your credentials: **sanMarCustomerNumber** (your SanMar customer number), **sanMarUserName** (your SanMar.com username), and the **sanMarUserPassword** (your SanMar.com password).

```
<soapenv:Envelope xmlns:soapenv="http://schemas.xmlsoap.org/soap/envelope/"
  xmlns:impl="http://impl.webservice.integration.sanmar.com/">
  <soapenv:Header />
  <soapenv:Body>
    <impl:getProductInfoByStyleColorSize>
      <!--Zero or more repetitions:-->
      <arg0>
        <color>Natural</color>
        <size>S</size>
        <style>pc61</style>
      </arg0>
      <arg1>
        <sanMarCustomerNumber>YourSanMarCustomerNumber</sanMarCustomerNumber>
        <sanMarUserName>YourSanmar.comUsername</sanMarUserName>
        <sanMarUserPassword>YourSanmar.comPassword</sanMarUserPassword>
      </arg1>
    </impl:getProductInfoByStyleColorSize>
  </soapenv:Body>
</soapenv:Envelope>
```

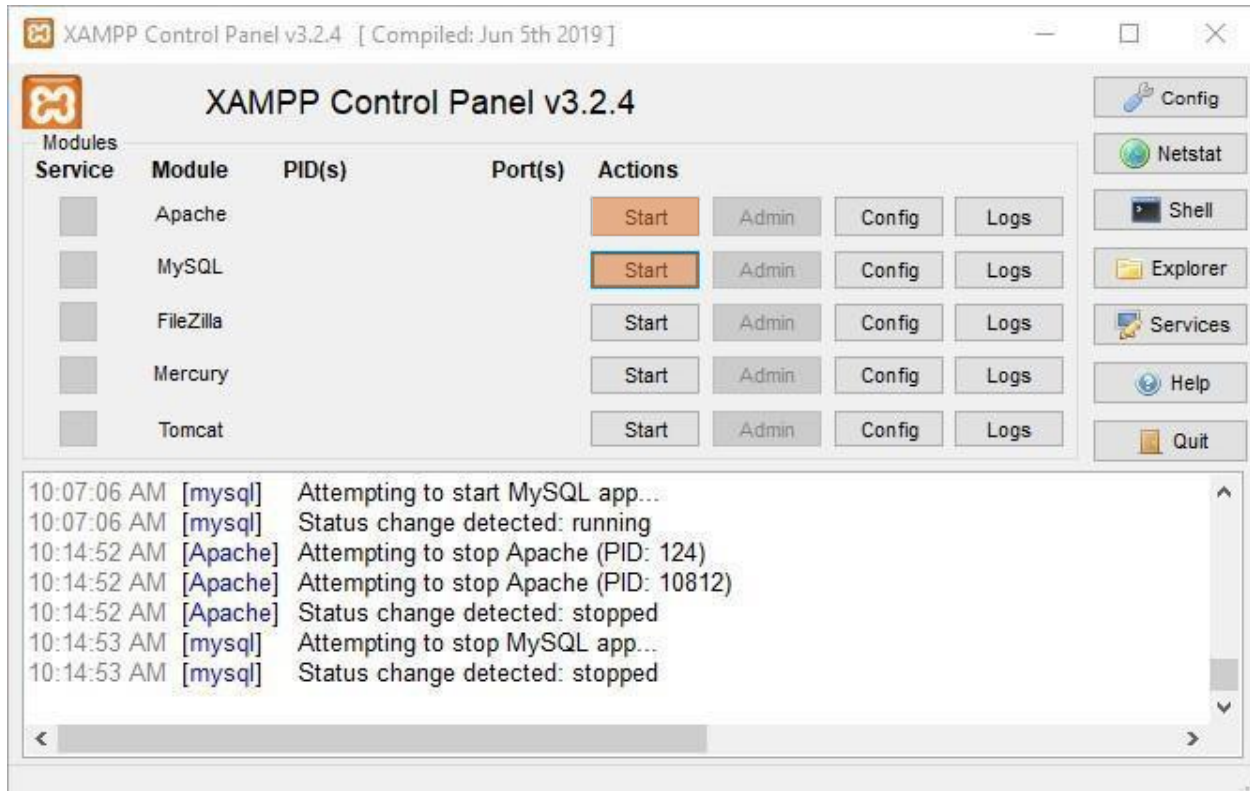
The XML response received back is below:

```
<S:Envelope xmlns:S="http://schemas.xmlsoap.org/soap/envelope/">
  <S:Body>
    <ns2:getProductInfoByStyleColorSizeResponse xmlns:
ns2="http://impl.webservice.integration.sanmar.com/">
      <return>
        <errorOccured>false</errorOccured>
        <listResponse>
          <productBasicInfo>
            <availableSizes>Adult Sizes: S-6XL</availableSizes>
            <brandName>Port & amp; Company</brandName>
            <caseSize>72</caseSize>
            <catalogColor>Natural</catalogColor>
            <color>Natural</color>
            <inventoryKey>11807</inventoryKey>
            <keywords>embroidery, embroider, embroidering, screen printing, screenprinting,
screen-printing, screen print, screenprint, screen-print, heat transfer,
heat transferring, heat-transferring, heat seal, heat sealing, heat-sealing,
pad-printing, pad-print, padprint, padprinting, male, males,Short sleeve,
short sleeves, short sleeved, shortsleeve, shortsleeves, shortsleeved,
short-sleeve, short-sleeves, short-sleeved, t shirt,t-shirt, tshirt,
t shirts, t-shirts, tshirts, tee shirt, teeshirt, tee-shirt, heavyweight,
pre shrunk, best seller, soft, comfortable, cotton, 100% cotton, xs, s, m, l,
xl, 2xl, 3xl, 4xl, 5xl, 6xl, xxl, xxxl, xxxxl, xxxxxxl, xxxxxxxl,men, men's,
mens,</keywords>
            <pieceWeight>0.38</pieceWeight>
          </productBasicInfo>
        </listResponse>
      </return>
    </ns2:getProductInfoByStyleColorSizeResponse>
  </S:Body>
</S:Envelope>
```

SanMar Web Services Integration Guide v22.7

```
<productDescription>A year-round essential, our best-selling t-shirt has been
voted "most popular" by groups, teams, clubs and schools across America.
6.1-ounce, 100% soft spun cotton 98/2 cotton/poly(Ash)
Removable tag for comfort and relabeling</productDescription>
<productStatus>Active</productStatus>
<productTitle>Port &amp; Company - Essential Tee. PC61</productTitle>
<size>S</size>
<sizeIndex>2</sizeIndex>
<style>PC61</style>
<uniqueKey>118072</uniqueKey>
<category>T-Shirts</category>
</productBasicInfo>
<productImageInfo>
<brandLogoImage>https://cdnm.sanmar.com/catalog/images/portandcompanyheader.jpg
</brandLogoImage>
<colorProductImage>https://cdnm.sanmar.com/catalog/images/imglib/cat1/2016/
f17/PC61_natural_model_front_102016.jpg</colorProductImage>
<colorProductImageThumbnail>https://cdnm.sanmar.com/cache/altview/imglib/cat1/
2016/f17/PC61_natural_model_front_102016.jpg</colorProductImageThumbnail>
<colorSquareImage>https://cdnm.sanmar.com/swatch/gifs/port_natural.gif
</colorSquareImage>
<colorSwatchImage>https://cdnm.sanmar.com/catalog/images/PC61sw.jpg
</colorSwatchImage>
<productImage>https://cdnm.sanmar.com/catalog/images/PC61.jpg</productImage>
<specSheet>https://www.apparelvideos.com/images/specsheet/pdf/specsheet/
PC61_specsheet.pdf</specSheet>
<thumbnailImage>https://cdnm.sanmar.com/catalog/images/PC61TN.jpg</thumbnailImage>
<titleImage />
<frontModel>https://cdnm.sanmar.com/imglib/mresjpg/2016/f17/
PC61_natural_model_front_102016.jpg</frontModel>
<backModel>https://cdnm.sanmar.com/imglib/mresjpg/2016/f17/
PC61_natural_model_back_102016.jpg</backModel>
<sideModel>https://cdnm.sanmar.com/imglib/mresjpg/2016/f17/
PC61_natural_model_side_102016.jpg</sideModel>
<backFlat>https://cdnm.sanmar.com/imglib/mresjpg/2010/f1/
PC61_Natural_back_FS06.jpg</backFlat>
<frontFlat>https://cdnm.sanmar.com/imglib/mresjpg/2010/f1/
PC61_Natural_Flat_Front_2009.jpg</frontFlat>
<threeQModel>https://cdnm.sanmar.com/imglib/mresjpg/2016/f17/
PC61_natural_model_3q_102016.jpg</threeQModel>
</productImageInfo>
<productPriceInfo>
<casePrice>2.84</casePrice>
<caseSalePrice>2.38</caseSalePrice>
<dozenPrice>3.84</dozenPrice>
<dozenSalePrice>2.38</dozenSalePrice>
<piecePrice>3.84</piecePrice>
<pieceSalePrice>2.38</pieceSalePrice>
<priceCode>A/P</priceCode>
<priceText>Price applies to sizes S-XL</priceText>
<saleEndDate>2023-04-01</saleEndDate>
<saleStartDate>2023-03-27</saleStartDate>
</productPriceInfo>
</listResponse>
<message>Product Info sent successfully.</message>
</return>
</ns2:getProductInfoByStyleColorSizeResponse>
</S:Body>
</S:Envelope>
```

Step 2: Open XAMPP Control Panel and click **Start** for the Apache and MySQL Modules.



Step 3: Navigate to the folder where XAMPP was installed and click on the htdocs folder. Right-click inside the folder and select **New → Text Document**. Name the file 'productExample.php.' Open the 'productExample.php' file in Visual Studio Code or your preferred IDE.

Step 4: Copy and paste the code sample below to the productExample.php file and save. Be sure to add your SanMar credentials in the **\$webServiceUser** array:

//creating SoapClient object- please review the web services integration guide for details.

```
<?php
try {
    $client = new SoapClient('https://ws.sanmar.com:8080/SanMarWebService/
SanMarProductInfoServicePort?wsdl', array(
        'trace' => true,
        'exceptions' => true));

    // Product Query
    $productInfoByStyleColorSize = array(
        'style' => 'pc61',
        'color' => 'natural',
        'size' => 's');

    //web service credential
    $webServiceUser = array(
        'sanMarCustomerNumber' => 'sanmarCustomerNumber',
        'sanMarUserName' => 'Sanmar.comUsername',
        'sanMarUserPassword' => 'sanmar.comPassword');

    //Setting array arguments for service call
    $getProductInfoByStyleColorSize = array(
        'arg0' => $productInfoByStyleColorSize,
        'arg1' => $webServiceUser);

    //calling service and getting response
    $response = $client->getProductInfoByStyleColorSize
($getProductInfoByStyleColorSize);
    $arr = json_decode(json_encode($response), true);

    //print entire array
    print_r($arr);
    echo '<br><br><br>';

    //print specific array element
    print_r($arr['return']['listResponse']['productBasicInfo']
['productDescription']);

} catch (Exception $e) {
    echo $e->getMessage();
}
?>
```

In the code, PHP's built-in **SoapClient** method is used to access the SanMar Product Information WSDL. For the request, you use the **soapCall** method which submits your web service credentials, and the query for the PC61/Natural/Small to the **getProductInfoByStyleColorSize** method.

The full XML response is printed out by using Print Entire Array method. There is also an example of printing a specific array element.

Step 5: Response: You should see a similar response below. The response will retrieve all product data related to the query.

```
Array ( [return] => Array ( [errorOccurred] => [listResponse] => Array ( [productBasicInfo] => Array ( [availableSizes] => Adult Sizes: S-6XL [brandName] => Port & Company
[caseSize] => 72 [catalogColor] => Natural [color] => Natural [inventoryKey] => 11807 [keywords] => embroidery, embroider, embroidering, screen printing, screenprinting,
screen-printing, screen print, screenprint, screen-print, heat transfer, heat transferring, heat-transferring, heat seal, heat sealing, heat-sealing, heat-transfer, heat-seal, heattransfer,
heatseal, pad print, pad printing, pad-printing, pad-print, padprint, padprinting, male, males,Short sleeve, short sleeves, short sleeved, shortsleeve, shortsleeves, shortsleeved, short-
sleeve, short-sleeves, short-sleeved,t shirt, t-shirt, tshirt, t shirts, t-shirts, tshirts, tee shirt, teeshirt, tee-shirt, heavyweight, heavy weight heavy-weight, preshrunk, pre-shrunk, pre
shrunk, best seller, soft, comfortable, cotton, 100% cotton, xs, s, m, l, xl, 2xl, 3xl, 4xl, 5xl, 6xl, xxl, xxxl, xxxxl, xxxxxxl, xxxxxxl,men, men's, mens, [pieceWeight] => 0.38
[productDescription] => A year-round essential, our best-selling t-shirt has been voted "most popular" by groups, teams, clubs and schools across America. 6.1-ounce, 100% soft
spun cotton 98/2 cotton/poly (Ash) 90/10 cotton/poly (Athletic Heather) 50/50 cotton/poly (Dark Heather Grey) Removable tag for comfort and relabeling [productStatus] =>
Active [productTitle] => Port & Company - Essential Tee. PC61 [size] => S [sizeIndex] => 2 [style] => PC61 [uniqueKey] => 118072 [category] => T-Shirts ) [productImageInfo]
=> Array ( [brandLogoImage] => https://cdnm.sanmar.com/catalog/images/portandcompanyheader.jpg [colorProductImage] =>
https://cdnm.sanmar.com/catalog/images/imglib/cat/2016/f17/PC61_natural_model_front_102016.jpg [colorProductImageThumbnail] =>
https://cdnm.sanmar.com/cache/altview/imglib/cat/2016/f17/PC61_natural_model_front_102016.jpg [colorSquareImage] => https://cdnm.sanmar.com/swatch/gifs/port_natural.gif
[colorSwatchImage] => https://cdnm.sanmar.com/catalog/images/PC61sw.jpg [productImage] => https://cdnm.sanmar.com/catalog/images/PC61.jpg [specSheet] =>
https://www.apparelvideos.com/images/specsheet/pdf/specsheet/PC61_specsheet.pdf [thumbnailImage] => https://cdnm.sanmar.com/catalog/images/PC61TN.jpg [titleImage] =>
[frontModel] => https://cdnm.sanmar.com/imglib/mresjpg/2016/f17/PC61_natural_model_front_102016.jpg [backModel] =>
https://cdnm.sanmar.com/imglib/mresjpg/2016/f17/PC61_natural_model_back_102016.jpg [sideModel] =>
https://cdnm.sanmar.com/imglib/mresjpg/2016/f17/PC61_natural_model_side_102016.jpg [backFlat] =>
https://cdnm.sanmar.com/imglib/mresjpg/2010/f1/PC61_Natural_back_FS06.jpg [frontFlat] =>
https://cdnm.sanmar.com/imglib/mresjpg/2010/f1/PC61_Natural_Flat_Front_2009.jpg [threeQModel] =>
https://cdnm.sanmar.com/imglib/mresjpg/2016/f17/PC61_natural_model_3q_102016.jpg ) [productPriceInfo] => Array ( [casePrice] => 2.84 [caseSalePrice] => 2.38 [dozenPrice]
=> 3.84 [dozenSalePrice] => 2.38 [piecePrice] => 3.84 [pieceSalePrice] => 2.38 [priceCode] => A/P [priceText] => Price applies to sizes S-XL [saleEndDate] => 2023-04-01
[saleStartDate] => 2023-03-27 ) [message] => Product Info sent successfully. ) )
```

SanMar Standard Product Information Services

EDEV: <https://edev-ws.sanmar.com:8080/SanMarWebService/SanMarProductInfoServicePort?wsdl>

PRODUCTION: <https://ws.sanmar.com:8080/SanMarWebService/SanMarProductInfoServicePort?wsdl>

There are five functions available for this web service.

getProductBulkInfo
getProductDeltaInfo
getProductInfoByBrand
getProductInfoByCategory
getProductInfoByStyleColorSize

SanMar getProductBulkInfo and DeltaInfo Service

The BulkInfo service creates a CSV data file with all our product information in the SanMarPDD/SanMarPI directory of our FTP server 20 minutes after the request is submitted. This service can be used once a month. Naming of the file will display in the following format: **SanMarPI-Bulk-YourSanMarCustomerNumber.csv**.

The DeltaInfo service creates an incremental CSV data file which will contain only information for products that have changed from the last Bulk or Delta request. The file will be generated in the SanMarPDD/SanMarPI directory of our FTP server 20 minutes after the request is submitted. The service can be used daily. Naming of the file will display **SanMarPI-Delta-YourSanMarCustomerNumber.csv**.

We recommend replacing the existing lines of data in your database with new data by matching the unique_key. The unique_key is a unique identifier for each style number, color, and size combination.

SanMar getProductBulkInfo Service and DeltaInfo XML Request

```
<arg0>  
  <sanMarCustomerNumber>SanMarCustomerNumber</sanMarCustomerNumber>  
  <sanMarUserName>SanMar.comUsername</sanMarUserName>  
  <sanMarUserPassword>SanMar.comPassword</sanMarUserPassword>  
  <senderId>?</senderId> //Do Not Use  
  <senderPassword>?</senderPassword> //Do Not Use  
</arg0>
```


SanMar getProductBulkInfo and DeltaInfo Response Parameters

#	A	Field Name	Description
1	A	UNIQUE_KEY	Unique Identifier created as combination of INVENTORY_KEY & SIZE_INDEX
2	B	PRODUCT_TITLE	Includes Manufacturer's name
3	C	PRODUCT_DESCRIPTION	Description and product features
4	D	STYLE#	Mill style # same as style number used in catalogs
5	E	AVAILABLE_SIZES	Sizes available
6	F	BRAND_LOGO_IMAGE	URL Image Link to Brand logo Image
7	G	THUMBNAIL_IMAGE	URL Image Link to Small image for Front Model Image
8	H	COLOR_SWATCH_IMAGE	URL Image Link to Colors available image for colors available for each style
9	I	PRODUCT_IMAGE	URL Image Link to Front Model Image
10	J	SPEC_SHEET	URL Image Link to PDF document listing specifications.
11	K	FRONT_FLAT	URL Image Link to Front Flat Image
12	L	BACK_FLAT	URL Image Link to Back Flat Image
13	M	FRONT_MODEL	URL Image Link to Front Model Image
14	N	BACK_MODEL	URL Image Link to Back Model Image
15	O	SIDE_MODEL	URL Image Link to Side Model Image
16	P	THREE_Q_MODEL	URL Image Link to Three Quarter Model Image
17	Q	PRICE_TEXT	Price applies to sizes text
18	R	COLOR_NAME	Color Name For website use
19	S	COLOR_SQUARE_IMAGE	URL Image Link to Color Square Image
20	T	COLOR_PRODUCT_IMAGE	URL Image Link to Front Model Image for all colors
21	U	COLOR_PRODUCT_IMAGE_THUMBNAIL	Small image for Front Model Image for all colors
22	V	SIZE	Product Size
23	W	PIECE_WEIGHT	Approximate Weight Per Piece in LBS
24	X	PIECE_PRICE	Price Per Piece based on 5 pieces or less of a single style & color
25	Y	DOZEN_PRICE	No longer used - Price Per Piece is displayed
26	Z	CASE_PRICE	Price per piece based upon Purchase of a case of one style, Size & color
27	AA	PIECE_SALE_PRICE	Sale Price Per Piece based on 5 pieces or less of a single style & color
28	AB	DOZEN_SALE_PRICE	No longer used – Sale Price Per Piece is displayed
29	AC	CASE_SALE_PRICE	Sale Price per piece based upon Purchase of a case of one style, Size & color
30	AD	SALE_START_DATE	Sale Start Date
31	AE	SALE_END_DATE	Sale End Date
32	AF	CASE_SIZE	Total # of pieces of a single one style, Size & color per case
33	AG	INVENTORY_KEY	Proprietary Inventory Key for each one style, Size & color combination
34	AH	SIZE_INDEX	Size category number for each size grouping
35	AI	CATALOG_COLOR	SanMar Mainframe Color Name for Ordering
36	AJ	PRICE_CODE	Suggested Retail Pricing Code (A/P = 50%, B/Q = 45%, C/R = 40%, D/S = 35%, E/T = 30%)
37	AK	PRODUCT_STATUS	Status of Product (Coming Soon, New, Regular, Discontinued)
38	AL	TITLE_IMAGE	Empty (Not currently being used)
39	AM	BRAND_NAME	Name of Manufacturer
40	AN	KEYWORDS	Product Keywords for website use
41	AO	CATEGORY	Product Category

SanMar getProductDeltaInfo Service XML Response

```
<S:Envelope xmlns:S="http://schemas.xmlsoap.org/soap/envelope/">
  <S:Body>
    <ns2:getProductDeltaInfoResponse xmlns:
      ns2="http://impl.webservice.integration.sanmar.com/">
      <return>
        <errorOccured>false</errorOccured>
        <message>Please access your file in the SanMarPI folder on our ftp server in
          sometime</message>
      </return>
    </ns2:getProductDeltaInfoResponse>
  </S:Body>
</S:Envelope>
```

SanMar getProductBulkInfo Service XML Response

```
<S:Envelope xmlns:S="http://schemas.xmlsoap.org/soap/envelope/">
  <S:Body>
    <ns2:getProductBulkInfoResponse xmlns:
      ns2="http://impl.webservice.integration.sanmar.com/">
      <return>
        <errorOccured>false</errorOccured>
        <message>Please access your file in the SanMarPI folder on our ftp server in
          sometime</message>
      </return>
    </ns2:getProductBulkInfoResponse>
  </S:Body>
</S:Envelope>
```

SanMar getProductInfoByBrand Service

This service will return product data based on the brand provided in the request.

Please note: Due to the data's size, a timeout may occur and may not return an XML response. In this scenario, our system will export the data to a CSV file in the SanMarPI FTP folder with the brand name and your customer number as part of the file name (i.e. SanMarPI-gildan-12345.csv)

SanMar getProductInfoByBrand Service Request Parameters

Field	Description	Type	Required
brand	Brand Name	STRING	Yes

Brand Names

Allmade	Champion	Hanes	Port & Company	tentree
Alternative Apparel	Comfort Colors	Jerzees	Port Authority	The North Face
American Apparel	CornerStone	Mercer+Mettle	Rabbit Skins	Tommy Bahama
Anvil	Cotopaxi	New Era	Red House	TravisMathew
Bella + Canvas	District	Next Level	Red Kap	Volunteer Knitwear
Brooks Brothers	Eddie Bauer	Nike	Russell Outdoors	Wonderwink
Bulwark	Fruit of the Loom	OGIO	Spacecraft	
Carhartt	Gildan	Outdoor Research	Sport-Tek	

SanMar getProductInfoByBrand Service XML Request

```

<soapenv:Envelope xmlns:soapenv="http://schemas.xmlsoap.org/soap/envelope/"
xmlns:impl="http://impl.webservice.integration.sanmar.com/">
  <soapenv:Header />
  <soapenv:Body>
    <impl:getProductInfoByBrand>
      <arg0>
        <brandName>OGIO</brandName>
      </arg0>
      <arg1>
        <sanMarCustomerNumber>5</sanMarCustomerNumber>
        <sanMarUserName>SanMarUsername</sanMarUserName>
        <sanMarUserPassword>SanMarPassword</sanMarUserPassword>
      </arg1>
    </impl:getProductInfoByBrand>
  </soapenv:Body>
</soapenv:Envelope>

```

SanMar getProductInfoByBrand Service Sample XML Response

```

<S:Envelope xmlns:S="http://schemas.xmlsoap.org/soap/envelope/">
  <S:Body>
    <ns2:getProductInfoByBrandResponse xmlns:
ns2="http://impl.webservice.integration.sanmar.com/">
      <return>
        <errorOccured>>false</errorOccured>
        <listResponse>
          <productBasicInfo>
            <brandName>OGIO</brandName>
            <caseSize>6</caseSize>
            <catalogColor>Royal</catalogColor>
            <color>Royal</color>
            <inventoryKey>40199</inventoryKey>
            <keywords>, embroidery, embroider, embroidering, heat transfer,
heat-transfer, heat transferring, heat-transferring, bags, bag,
corporate city corp messenger, ogio, messenger bag, messenger, travel,
adjustable, holiday, Holiday, gift,present, holiday gift, gifts for her,
gifts for him, gift wrap, corporate gift,laptop sleeve,laptopsleeve,
laptop-sleeve, laptop, organizer panel, organizer, organizer-panel,
organizational panel,</keywords>
            <pieceWeight>3.72</pieceWeight>
            <productDescription>This large messenger is actually a mobile office that
ditches the bottomless-pit syndrome and keeps multimedia organized and
ready. 600D poly/420D doobby poly Padded top drop-in laptop sleeve
Large main compartment media/audio pocket with headphone exit port
Detachable, adjustable, padded shoulder strap Pullman handle attachment
sleeve Deluxe organization panel Interior file separators Laptop
sleeve: 11"h x 17"w x 2"d; fits most 17" laptops Dimensions: 13"h x 18"w
x 6"d Capacity: 1,500 cu.in./24.6 L Weight: 3.42 lbs./1.6 kg
Note: Bags not intended for use by children 12 and under. Includes a
California Prop 65 and social responsibility hangtag.</productDescription>
          </productBasicInfo>
        </listResponse>
      </return>
    </ns2:getProductInfoByBrandResponse>
  </S:Body>
</S:Envelope>

```

SanMar getProductInfoByBrand Service Sample XML Response Continued

```

    <productStatus>Active</productStatus>
    <productTitle>OGIO - Corporate City Corp Messenger. 711207</productTitle>
    <size>OSFA</size>
    <sizeIndex>3</sizeIndex>
    <style>711207</style>
    <uniqueKey>401993</uniqueKey>
    <category>Bags</category>
  </productBasicInfo>
  <productImageInfo>
    <brandLogoImage>https://cdnm.sanmar.com/catalog/images/ogioheader.jpg
    </brandLogoImage>
    <colorProductImage>https://cdnm.sanmar.com/catalog/images/imglib/
    cat1/2012/f11/711207_Royal_GA13.jpg</colorProductImage>
    <colorProductImageThumbnail>https://cdnm.sanmar.com/cache/altview/imglib/
    cat1/2012/f11/711207_Royal_GA13.jpg</colorProductImageThumbnail>
    <colorSquareImage>https://cdnm.sanmar.com/swatch/gifs/ogio_royal.gif
    </colorSquareImage>
    <colorSwatchImage>https://cdnm.sanmar.com/catalog/images/711207sw.jpg
    </colorSwatchImage>
    <productImage>https://cdnm.sanmar.com/catalog/images/711207.jpg
    </productImage>
    <specSheet>https://www.apparelvideos.com/images/specsheet/pdf/specsheet/
    711207_specsheet.pdf</specSheet>
    <thumbnailImage>https://cdnm.sanmar.com/catalog/images/711207TN.jpg
    </thumbnailImage>
    <titleImage />
    <frontModel>https://cdnm.sanmar.com/imglib/mresjpg/2012/f11/
    711207_Royal_GA13.jpg</frontModel>
    <backModel />
    <sideModel />
    <backFlat />
    <frontFlat />
    <threeQModel />
  </productImageInfo>
  <productPriceInfo>
    <casePrice>42.9</casePrice>
    <dozenPrice>46.9</dozenPrice> // Dozens Price Is no longer available and
    reflects piece price.
    <piecePrice>46.9</piecePrice>
    <priceCode>C/R</priceCode>
    <priceText>Price</priceText>
  </productPriceInfo>
</listResponse> // List continues with additional styles under brand category.
<message>Product Info sent successfully.</message>
</return>
</ns2:getProductInfoByBrandResponse>
</S:Body>
</S:Envelope>

```

SanMar getProductInfoByCategory Service

This service returns a list of products and related data based on the requested category.

Please note: Due to the data's size, a timeout may occur and may not return an XML response. In this scenario, our system will export the data to a CSV file in the SanMarPI FTP folder with the category name and your customer number as part of the file name (i.e. SanMarPI-Outerwear-12345.csv)

SanMar getProductInfoByCategory Service Request Parameters

Field	Description	Type	Required
Category	SanMar Category Name	STRING	Yes

Category Names

Activewear	Juniors & Young Men	Workwear
Accessories	Sweatshirts/Fleece	Woven Shirts
Polos/Knits	Caps	Outerwear
Bags	Infant & Toddler	Ladies
Youth	Tall	

SanMar getProductInfoByCategory Service XML Request

```
<soapenv:Envelope xmlns:soapenv="http://schemas.xmlsoap.org/soap/envelope/"
xmlns:impl="http://impl.webservice.integration.sanmar.com/">
  <soapenv:Header />
  <soapenv:Body>
    <impl:getProductInfoByCategory>
      <arg0>
        <category>Caps</category>
      </arg0>
      <arg1>
        <sanMarCustomerNumber>SanMarCustomerNumber</sanMarCustomerNumber>
        <sanMarUserName>SanMarUsername</sanMarUserName>
        <sanMarUserPassword>SanMarPassword</sanMarUserPassword>
        <senderId>?</senderId>
        <senderPassword>?</senderPassword>
      </arg1>
    </impl:getProductInfoByCategory>
  </soapenv:Body>
</soapenv:Envelope>
```

SanMar getProductInfoByCategory Service XML Response

```

<S:Envelope xmlns:S="http://schemas.xmlsoap.org/soap/envelope/">
  <S:Body>
    <ns2:getProductInfoByCategoryResponse
      xmlns:ns2="http://impl.webservice.integration.sanmar.com/">
      <return>
        <errorOccured>>false</errorOccured>
        <listResponse>
          <productBasicInfo>
            <brandName>Port Authority</brandName>
            <caseSize>144</caseSize>
            <catalogColor>Navy</catalogColor>
            <color>Navy</color>
            <inventoryKey>5547</inventoryKey>
            <keywords>embroidery, embroider, embroidering, screen printing,
              screen-printing, hook and loop, unstructured caps</keywords>
            <pieceWeight>0.26</pieceWeight>
            <productDescription>A timeless design with a soft, brushed feel.
              Fabric: 100% brushed cotton twill Structure: Unstructured
              Profile: Low Closure: Hidden tuck-in with hook and
              loop</productDescription>
            <productStatus>Active</productStatus>
            <productTitle>Port Authority Brushed Twill Cap. BTU</productTitle>
            <size>OSFA</size>
            <sizeIndex>3</sizeIndex>
            <style>BTU</style>
            <uniqueKey>55473</uniqueKey>
          </productBasicInfo>
          <productImageInfo>
            <brandLogoImage>https://cdnm.sanmar.com/catalog/images/
              portauthorityheader.jpg</brandLogoImage>
            <colorProductImage>https://cdnm.sanmar.com/catalog/images/imglib/
              catl/BTU_Navy_GA10.jpg</colorProductImage>
            <colorProductImageThumbnail>https://cdnm.sanmar.com/cache/altview/
              imglib/catl/BTU_Navy_GA10.jpg</colorProductImageThumbnail>
            <colorSquareImage>https://cdnm.sanmar.com/swatch/gifs/port_navy.gif
              </colorSquareImage>
            <colorSwatchImage>https://cdnm.sanmar.com/catalog/images/BTUsw.jpg
              </colorSwatchImage>
            <productImage>https://cdnm.sanmar.com/catalog/images/BTU.jpg
              </productImage>
            <specSheet>https://www.apparelvideos.com/images/specsheet/pdf/
              specsheet/BTU_specsheet.pdf</specSheet>
            <thumbnailImage>https://cdnm.sanmar.com/catalog/images/BTUTN.jpg
              </thumbnailImage>
            <titleImage />
            <frontModel>https://cdnm.sanmar.com/imglib/mresjpg/BTU_Navy_GA10.jpg
              </frontModel>
            <backModel />
            <sideModel />
            <backFlat>https://cdnm.sanmar.com/imglib/mresjpg/BTU_Navy_Back_GA10.jpg
              </backFlat>
            <frontFlat>https://cdnm.sanmar.com/imglib/mresjpg/2015/f23/BTU\_navy

```

SanMar getProductInfoByCategory Service XML Response Continued

```
        full_front.jpg</frontFlat>
        <threeQModel />
    </productImageInfo>
    <productPriceInfo>
        <casePrice>3.09</casePrice>
        <dozenPrice>4.09</dozenPrice>
        <piecePrice>4.09</piecePrice>
        <priceCode>A/P</priceCode>
        <priceText>Price</priceText>
    </productPriceInfo>
</listResponse>
//Truncated//
<message>Product Info sent successfully.</message>
</return>
</ns2:getProductInfoByCategoryResponse>
</S:Body>
</S:Envelope>
```


SanMar getProductInfoByStyleColorSize Service

This service returns all the product data related to the request. You may search by: style, style-color-size, style-color, or style-size.

SanMar getProductInfoByStyleColorSize Service Request Parameters

Field	Required	Type	Description
style	Yes	STRING	STYLE# - Example: K500
color	No	STRING	CATALOGCOLOR- Example: Black
size	No	STRING	SIZE - Example: XL

SanMar getProductInfoByStyleColorSize XML Request

```
<soapenv:Envelope xmlns:soapenv="http://schemas.xmlsoap.org/soap/envelope/"
xmlns:impl="http://impl.webservice.integration.sanmar.com/">
  <soapenv:Header />
  <soapenv:Body>
    <impl:getProductInfoByStyleColorSize>
      <!--Zero or more repetitions:-->
      <arg0>
        <style>pc61</style>
        <size>S</size>
        <color>White</color>
      </arg0>
      <arg1>
        <sanMarCustomerNumber>SanMarCustomerNumber</sanMarCustomerNumber>
        <sanMarUserName>SanMarUsername</sanMarUserName>
        <sanMarUserPassword>SanMarPassword</sanMarUserPassword>
        <senderId>?</senderId>
        <senderPassword>?</senderPassword>
      </arg1>
    </impl:getProductInfoByStyleColorSize>
  </soapenv:Body>
</soapenv:Envelope>
```

SanMar getProductInfoByStyleColorSize Service Response Parameters

Field	Example	Description
availableSizes	Adult Sizes: XS-6XL, Youth Sizes: XS(2-4) S(6-8) M(10-12) L(14-16) XL(18-20)	Available Sizes
brandName	Port Authority, Hanes, Sport-Tek, Jerzees	# of Pieces per Case
caseSize	36, 12, 72	Size of the case – no of pieces in one case
catalogColor	White, Athletic Hthr, Ath. Maroon	SanMar Mainframe Color
color	White, Athletic Heather, Athletic Maroon	Full Color Name
inventoryKey	10566	SanMar Product Identifier
keywords	polo, polos, xs, s, m, l, xl, 2xl, 3xl, 4xl, 5xl, 6xl, xxl, xxxl, xxxxl, xxxxxl, xxxxxxl, 420, button, knit, pique	Product Keywords
pieceWeight	0.6094	Approximate Weight Per Piece – lbs. /piece – Final weight determined at shipping.
productDescription	A favorite year after year this polo's are known for their exceptional range of colors styles and sizes. The soft pique knit is shrink-resistant and easy to care for so your group will always look its best. 7-ounce 100% ring spun combed cotton heavyweight pique (preshrunk) Garment washed for softness Double-needle stitching throughout Flat knit collar and cuffs Horn-tone buttons Locker patch Side vents	Product Description and features
productStatus	Active, Discontinued, New, Coming Soon, Regular	Status of Product
productTitle	Port Authority - Pique Knit Polo. K420, JERZEES - Youth	
size	XS, S, M, L, XL, 2XL	Y or N (Yes or No)
sizeIndex	1, 2, 3,4,5	Product Size Identifier 1-5 represents XS-XL as well as 2XL-6XL

style	K420, PC61	STYLE# - Example K500
uniqueKey	105661	Unique Product Identifier (Inventory Key + Size Index)
brandLogoImage	http://cdn.sanmar.com/catalog/images/portauthorityheader.jpg	URL Image Link to Brand Logo Image
colorProductImage	http://cdn.sanmar.com/catalog/images/imglib/catl/PC61_White_Model_Front_2010.jpg	URL Image Link to Front Model Image
ColorProductImageThumbnail	http://cdn.sanmar.com/cache/altview/imglib/catl/PC61_White_Model_Front_2010.jpg	URL Image Link to Small image for Front Model Image
colorSquareImage		URL Image Link to Color of product
colorSwatchImage	http://cdn.sanmar.com/catalog/images/PC61sw.jpg	URL Image Link to Colors available image for colors available for each style
productImage	http://cdn.sanmar.com/catalog/images/PC61.jpg	Main Product Image
specSheet	https://ws.sanmar.com:8080/SanMarWebService/servlet/SpecSheetController?specSheetName=PC61.pdf	URL Image Link to PDF document listing specifications.
thumbnailImage	105661	URL Image Link to Small image for Front Model Image
titleImage	Not Used	
frontModel	29M_White_Model_Front_082510.jpg	URL Image Link to Front Model Image
backModel	http://cdn.sanmar.com/imglib/mresjpg/2014/f13/5170_tetal_model_back_072014.jpg	URL Image Link to Back Model Image
sideModel	http://cdn.sanmar.com/imglib/mresjpg/2014/f13/5170_white_model_side_072014.jpg	URL Image Link to Side Model Image

backFlat	http://cdn.sanmar.com/imglib/mresjpg/29M_White_Flat_Back_2009.jpg	URL Image Link to Back Flat Image
frontFlat	http://cdn.sanmar.com/imglib/mresjpg/2015/f6/29M_white_flat_front.jpg	URL Image Link to Front Flat Image
threeQModel	http://cdn.sanmar.com/imglib/mresjpg/2014/f13/5170_white_model_3q_072014.jpg	URL Image Link to Three Quarter Model Image
casePrice	1.76	Price per piece based upon Purchase of a case of one style, size & color
caseSalePrice	99.36	Sale Price per piece based upon Purchase of a case of one style, size & color
dozenPrice	No Longer Used – Displays Piece Price 2.76	No Longer Used – Displays Piece Price
dozenSalePrice	No Longer Used – Displays Piece Price 2.76	Price Per Piece based on 6 pieces or more of a single style, size & color
piecePrice	2.76	Price Per Piece based on 5 pieces or less of a single style & color
pieceSalePrice	1.38	Sale Price Per Piece based on 5 pieces or less of a single style & color
priceCode	A	Price Text
priceText	Price applies to sizes XS-XL	Manufacture Pricing Code
saleEndDate	2015-09-20	Sale End Date
saleStartDate	2015-09-14	Sale Start Date

SanMar getProductInfoByStyleColorSize Service XML Response

```

<S:Envelope xmlns:S="http://schemas.xmlsoap.org/soap/envelope/">
<S:Body>
  <ns2:getProductInfoByStyleColorSizeResponse
  xmlns:ns2="http://impl.webservice.integration.sanmar.com/">
    <return>
      <errorOccured>>false</errorOccured>
      <listResponse>
        <productBasicInfo>
          <availableSizes>Adult Sizes: S-6XL</availableSizes>
          <brandName>Port & Company</brandName>
          <caseSize>72</caseSize>
          <catalogColor>White</catalogColor>
          <color>White</color>
          <inventoryKey>11803</inventoryKey>
          <keywords>embroidery, embroider, embroidering, screen printing,
          screenprinting, screen-printing, screen print, screenprint, screen-
          print, heat transfer, heat transferring, heat-transferring, heat
          seal, heat sealing, heat-sealing, heat-transfer, heat-seal,
          heattransfer, heatseal, pad print, pad printing, pad-printing, pad-
          print, padprint, padprinting, male, males, Short sleeve, short
          sleeves, short sleeved, shortsleeve, shortsleeves, shortsleeved,
          short-sleeve, short-sleeves, short-sleeved, t shirt, t-shirt,
          tshirt, t shirts, t-shirts, tshirts, tee shirt, teeshirt, tee-
          shirt, heavyweight, heavy weight heavy-weight, preshrunk, pre-
          shrunk, pre shrunk, best seller, soft, comfortable, cotton, 100%
          cotton, xs, s, m, l, xl, 2xl, 3xl, 4xl, 5xl, 6xl, xxl, xxxl,
          xxxxl, xxxxxl, xxxxxxxl, men, men's, mens,</keywords>
          <pieceWeight>0.38</pieceWeight>
          <productDescription>A year-round essential, our best-selling t-
          shirt has been voted "most popular" by groups, teams, clubs and
          schools across America. 6.1-ounce, 100% soft spun cotton
          98/2 cotton/poly (Ash) 90/10 cotton/poly (Athletic
          Heather) 50/50 cotton/poly (Dark Heather Grey) Removable
          tag for comfort and relabeling</productDescription>
          <productStatus>Active</productStatus>
          <productTitle>Port & Company - Essential Tee.
          PC61</productTitle>
          <size>S</size>
          <sizeIndex>2</sizeIndex>
          <style>PC61</style>
          <uniqueKey>118032</uniqueKey>
          <category>T-Shirts</category>
        </productBasicInfo>
        <productImageInfo>
          <brandLogoImage>https://cdnm.sanmar.com/catalog/images/
          portandcompanyheader.jpg</brandLogoImage>
          <colorProductImage>https://cdnm.sanmar.com/catalog/images/
          imglib/cat1/2016/f17/PC61_white_model_front_102016.jpg
          </colorProductImage>
          <colorProductImageThumbnail>https://cdnm.sanmar.com/
          cache/altview/imglib/cat1/2016/f17/PC61_white_model_
          front_102016.jpg</colorProductImageThumbnail>
          <colorSquareImage>https://cdnm.sanmar.com/swatch/gifs/
          port_white.gif</colorSquareImage>
          <colorSwatchImage>https://cdnm.sanmar.com/catalog/images/
          PC61sw.jpg</colorSwatchImage>
        </productImageInfo>
      </listResponse>
    </return>
  </ns2:getProductInfoByStyleColorSizeResponse>
</S:Body>
</S:Envelope>

```

SanMar getProductInfoByStyleColorSize Service XML Response

```

    <productImage>https://cdnm.sanmar.com/catalog/images/
    PC61.jpg</productImage>
    <specSheet>https://www.apparelvideos.com/images/specsheet/
    pdf/specsheet/PC61_specsheet.pdf</specSheet>
    <thumbnailImage>https://cdnm.sanmar.com/catalog/images/
    PC61TN.jpg</thumbnailImage>
    <titleImage />
    <frontModel>https://cdnm.sanmar.com/imglib/mresjpg/
    2016/f17/PC61_white_model_front_102016.jpg</frontModel>
    <backModel>https://cdnm.sanmar.com/imglib/mresjpg/
    2016/f17/PC61_white_model_back_102016.jpg</backModel>
    <sideModel>https://cdnm.sanmar.com/imglib/mresjpg/
    2016/f17/PC61_white_model_side_102016.jpg</sideModel>
    <backFlat>https://cdnm.sanmar.com/imglib/mresjpg/
    2012/f1/PC61_White_back_FS06.jpg</backFlat>
    <frontFlat>https://cdnm.sanmar.com/imglib/mresjpg/
    2012/f1/PC61_White_Flat_Front_2009.jpg</frontFlat>
    <threeQModel>https://cdnm.sanmar.com/imglib/mresjpg/
    2016/f17/PC61_white_model_3q_102016.jpg</threeQModel>
  </productImageInfo>
  <productPriceInfo>
    <casePrice>2.84</casePrice>
    <caseSalePrice>2.38</caseSalePrice>
    <dozenPrice>3.84</dozenPrice>
    <dozenSalePrice>2.38</dozenSalePrice>
    <piecePrice>3.84</piecePrice>
    <pieceSalePrice>2.38</pieceSalePrice>
    <priceCode>A/P</priceCode>
    <priceText>Price applies to sizes S-XL</priceText>
    <saleEndDate>2023-05-06</saleEndDate>
    <saleStartDate>2023-05-01</saleStartDate>
  </productPriceInfo>
</listResponse>
  <message>Product Info sent successfully.</message>
</return>
</ns2:getProductInfoByStyleColorSizeResponse>
</S:Body>
</S:Envelope>

```

PromoStandards - Product Data Services V2.0.0

EDEV: <https://edev-ws.sanmar.com:8080/promostandards/ProductDataServiceV2.xml?wsdl>

PRODUCTION: <https://ws.sanmar.com:8080/promostandards/ProductDataServiceV2.xml?wsdl>

There are four functions available for this web service.

- getProduct
- getProductCloseOut
- getProductDateModified
- getProductSellable

PromoStandards GetProduct V2.0.0 Service

This function will provide detailed product data based on a specific ProductId or any additional subset filtering provided at the request. Information includes GTIN, PMS colors and companion details.

PromoStandards GetProduct V2.0.0 Service Request Parameters

Field	Description	Example	Required	Type	Max Chars
wsVersion	Promostandard Version	2.0.0	Yes	STRING	64
id	SanMar.com Username	SanMarUsername	Yes	STRING	64
password	SanMar.com Password	SanMarPassword	Yes	STRING	64
localizationCountry	Country Code	us	Yes	STRING	2
localizationLanguage	Language Code	en	Yes	STRING	2
productId	SanMar Style#	PC61	No	STRING	64
partId	SanMar Unique Key	175762	No	STRING	64
colorName	SanMar Mainframe or catalog color Name	Aquatic Blue	No	STRING	64
ApparelSizeArray	To collect data for a specific size productId & partId are required *Case Sensitive				
*apparelStyle	Product Type	Unisex, Mens, Womens, Youth, MensTall	No	STRING	64
*labelSize	Product Size: CUSTOM for Pants and Ladies XXL Sizes	XS - 6XL	No	STRING	64
*customSize	Pant Sizes Ex: 2737 or XS - 6XL	No	No	STRING	64

PromoStandards GetProduct V2.0.0 Service XML Request

```
<soapenv:Envelope xmlns:soapenv="http://schemas.xmlsoap.org/soap/envelope/"
xmlns:ns="http://www.promostandards.org/WSDL/ProductDataService/2.0.0/"
xmlns:shar="http://www.promostandards.org/WSDL/ProductDataService/2.0.0/SharedObjects/"
">
  <soapenv:Header />
  <soapenv:Body>
    <ns:GetProductRequest>
      <shar:wsVersion>2.0.0</shar:wsVersion>
      <shar:id>SanMarUsername</shar:id>
      <shar:password>SanMarPassword</shar:password>
      <shar:localizationCountry>us</shar:localizationCountry>
      <shar:localizationLanguage>en</shar:localizationLanguage>
      <shar:productId>MM1000</shar:productId>
      <shar:partId>1878771</shar:partId>
      <shar:colorName>DeepBlack</shar:colorName>
      <shar:ApparelSizeArray>
        <shar:ApparelSize>
          <shar:apparelStyle>Mens</shar:apparelStyle>
          <shar:labelSize>S</shar:labelSize>
          <shar:customSize>S</shar:customSize>
        </shar:ApparelSize>
      </shar:ApparelSizeArray>
    </ns:GetProductRequest>
  </soapenv:Body>
</soapenv:Envelope>
```

PromoStandards GetProduct Data V2.0.0 Service Response Parameters

Field	Description	Data Type	Required
productId	The associated product.	64 STRING	Yes
productName	The Supplier name for the product	256 STRING	Yes
LocationDecorationArray	An array of Location Decoration objects	OBJECT ARRAY	Yes
description	Basic product description or bulleted list of descriptions.	2048 STRING ARRAY	Yes
ProductMarketingPointArray	Marketing points type and content. An array of MarketingPoint objects.	OBJECT ARRAY	No
ProductKeywordArray	Array of keywords often used in searching for this product. An array of ProductKeyword objects.	OBJECT ARRAY	No
productBrand	The specific product brand	64 STRING	No
<u>export</u>	Product status for export	NILLABLE BOOLEAN	Yes
<u>ProductCategoryArray</u>	The product’s categorization array. An array of ProductCategory objects.	OBJECT ARRAY	No
<u>RelatedProductArray</u>	Products related to the requested product as Substitutable, CompanionSell, or Common Grouping (Family). An array of RelatedProduct objects.	OBJECT ARRAY	No
<u>ProductPartArray</u>	All part specific product data. An array of ProductPart objects.	OBJECT ARRAY	Yes
<u>lastChangeDate</u>	The date time stamp of the most recent change to this data in ISO 8601 format	ISO 8601 DATE	Yes
<u>creationDate</u>	The date time stamp when this products data initially became available in ISO 8601 format	ISO 8601 DATE	Yes

<u>endDate</u>	<u>The Date this Product expires from Supplier availability in ISO 8601 format</u>	<u>ISO 8601 DATE</u>	No
<u>effectiveDate</u>	<u>The Date this Product initially becomes available from the Supplier in ISO 8601 format</u>	<u>ISO 8601 DATE</u>	No
<u>isCaution</u>	<u>Cautionary status to review for specific warnings about using product data.</u>	<u>NILLABLE BOOLEAN</u>	<u>Yes</u>
<u>cautionComment</u>	<u>Product cautionary comments</u>	<u>1024 STRING</u>	No
<u>isCloseout</u>	<u>Indicates if the product is Discontinued. Discontinued is the end of the SanMar Product Lifecycle.</u>	<u>NILLABLE BOOLEAN</u>	Yes
<u>primaryImageURL</u>	<u>The URL of the product's primary image. Any valid URL can be returned including prefixes like http and ftp.</u>	<u>1024 STRING</u>	<u>No</u>
<u>ProductPriceGroupArray</u>	<u>Marketing-oriented pricing information. Represented as an array of Product Price objects. Prices are List prices.</u>	<u>OBJECT ARRAY</u>	No
<u>FobPointArray</u>	<u>An array of FOB points object</u>	<u>ARRAY</u>	Yes

PromoStandards GetProductData V2.0.0 Service XML Response

```

<S:Envelope xmlns:S="http://schemas.xmlsoap.org/soap/envelope/">
  <S:Body>
    <ns2:GetProductResponse xmlns:ns2="http://www.promostandards.org/WSDL/ProductDataService/2.0.0/"xmlns="http://www.promostandards.org/WSDL/ProductDataService/2.0.0/SharedObjects/">
      <ns2:Product>
        <productId>MM1000</productId>
        <productName>MERCER+METTLE Stretch Heavyweight Pique Polo MM1000</productName>
        <description>Crafted in a heavier knit, this refined polo is just as comfortable as the classics from which it was inspired. The easy-moving fabric offers moisture wicking when the heat is on. The black satin-finished rimmed buttons on the placket and back collar extend a style-forward feel on the outside, while a dyed-to-match satin-twill neck tape lines the inside.Fabric+Weight</description>
        <description>8.1-ounce, 58/39/3 cotton/poly/spandex diamond pique</description>
        <description>Features+Benefits</description>
        <description>Moisture-wicking</description>
        <description>Button-backed, ribbed collar</description>
        <description>Dyed-to-match satin twill neck tape</description>
        <description>2-button placket</description>
        <description>Rimmed, black satin-finished buttons</description>
        <description>Ribbed cuffs</description>
        <description>Notched vents</description>
        <priceExpiresDate xmlns:xsi="http://www.w3.org/2001/XMLSchema-instance" xsi:nil="true" />
        <ns2:ProductKeywordArray>
          <ProductKeyword>
            <keyword>Stretch</keyword>
          </ProductKeyword>
          <ProductKeyword>
            <keyword>Pique</keyword>
          </ProductKeyword>
          <ProductKeyword>
            <keyword>Polo</keyword>
          </ProductKeyword>
          <ProductKeyword>
            <keyword>Mercer</keyword>
          </ProductKeyword>
          <ProductKeyword>
            <keyword>Mettle</keyword>
          </ProductKeyword>
          <ProductKeyword>
            <keyword>Mercer and Mettle</keyword>
          </ProductKeyword>
          <ProductKeyword>
            <keyword>Mercer & Mettle</keyword>
          </ProductKeyword>
          <ProductKeyword>
            <keyword>Mercer&Mettle</keyword>
          </ProductKeyword>
          <ProductKeyword>
            <keyword>Mercer + Mettle</keyword>
          </ProductKeyword>
        </ns2:ProductKeywordArray>
      </ns2:Product>
    </ns2:GetProductResponse>
  </S:Body>
</S:Envelope>

```

PromoStandards GetProductData V2.0.0 Service XML Response

```

    <ProductKeyword>
      <keyword>Mercer+Mettle</keyword>
    </ProductKeyword>
    <ProductKeyword>
      <keyword>MercerMettle</keyword>
    </ProductKeyword>
    <ProductKeyword>
      <keyword>Mercer Mettle</keyword>
    </ProductKeyword>
  </ns2:ProductKeywordArray>
  <productBrand>Mercer+Mettle</productBrand>
  <ns2:export>>false</ns2:export>
  <ns2:ProductCategoryArray>
    <ProductCategory>
      <category>Polos/Knits</category>
      <subCategory>Cotton, Easy Care</subCategory>
    </ProductCategory>
  </ns2:ProductCategoryArray>
  <ns2:RelatedProductArray>
    <RelatedProduct>
      <relationType>Companion Sell</relationType>
      <productId>MM1000</productId>
    </RelatedProduct>
  </ns2:RelatedProductArray>
  <primaryImageUrl>https://cdnm.sanmar.com/catalog/images/MM1000.jpg
</primaryImageUrl>
  <ns2:ProductPriceGroupArray>
    <ProductPriceGroup>
      <ProductPriceArray>
        <ProductPrice>
          <quantityMin>1</quantityMin>
          <quantityMax>2147483647</quantityMax>
          <price>24.98</price>
        </ProductPrice>
      </ProductPriceArray>
      <groupName>MSRP</groupName>
      <currency>USD</currency>
    </ProductPriceGroup>
  </ns2:ProductPriceGroupArray>
  <complianceInfoAvailable xmlns:xsi="http://www.w3.org/2001/
XMLSchema-instance" xsi:nil="true" />
  <ns2:ProductPartArray>
    <ns2:ProductPart>
      <partId>1878771</partId>
      <ns2:primaryColor>
        <Color>
          <standardColorName>Deep Black</standardColorName>
          <colorName>Insignia Blue</colorName>
        </Color>
      </ns2:primaryColor>
      <ns2:ColorArray>
        <Color>
          <standardColorName>Deep Black</standardColorName>
          <approximatePms>BLACK C</approximatePms>
          <colorName>DeepBlack</colorName>
        </Color>
      </ns2:ColorArray>
    </ns2:ProductPart>
  </ns2:ProductPartArray>

```

PromoStandards GetProductData V2.0.0 Service XML Response

```

</ns2:ColorArray>
<ApparelSize>
  <apparelStyle>Mens</apparelStyle>
  <labelSize>S</labelSize>
</ApparelSize>
<Dimension>
  <dimensionUom>FT</dimensionUom>
  <depth>0</depth>
  <height>0</height>
  <width>0</width>
  <weightUom>OZ</weightUom>
  <weight>11.52</weight>
</Dimension>
<gtin>00191265938235</gtin>
<isRushService>>false</isRushService>
<ns2:ShippingPackageArray>
  <ShippingPackage>
    <packageType>Box</packageType>
    <quantity>36</quantity>
    <dimensionUom>IN</dimensionUom>
    <depth>23.50</depth>
    <height>10.00</height>
    <width>16.50</width>
    <weightUom>LB</weightUom>
    <weight>26.00</weight>
  </ShippingPackage>
</ns2:ShippingPackageArray>
<endDate xmlns:xsi="http://www.w3.org/2001/
XMLSchema-instance" xsi:nil="true" />
<effectiveDate>2023-04-20T16:35:43.653</effectiveDate>
<isCloseout>>false</isCloseout>
<isCaution>>false</isCaution>
<isOnDemand>>false</isOnDemand>
<isHazmat>>false</isHazmat>
</ns2:ProductPart>
</ns2:ProductPartArray>
<ns2:lastChangeDate>2023-04-20T16:35:43.653</ns2:lastChangeDate>
<ns2:creationDate>2021-09-01T08:05:34.297</ns2:creationDate>
<endDate xmlns:xsi="http://www.w3.org/2001/
XMLSCHEMA-INSTANCE" XSI:NIL="TRUE" />
<effectiveDate>2023-04-20T16:35:43.653</effectiveDate>
<isCaution>>false</isCaution>
<isCloseout>>false</isCloseout>
<FobPointArray>
  <FobPoint>
    <fobId>6</fobId>
    <fobCity>Jacksonville</fobCity>
    <fobState>FL</fobState>
    <fobPostalCode>32219</fobPostalCode>
    <fobCountry>USA</fobCountry>
  </FobPoint>
  <FobPoint>
    <fobId>4</fobId>
    <fobCity>Reno</fobCity>
    <fobState>NV</fobState>
    <fobPostalCode>89441</fobPostalCode>

```

PromoStandards GetProductData V2.0.0 Service XML Response

```
    <fobCountry>USA</fobCountry>
  </FobPoint>
  <FobPoint>
    <fobId>3</fobId>
    <fobCity>Dallas</fobCity>
    <fobState>TX</fobState>
    <fobPostalCode>75038</fobPostalCode>
    <fobCountry>USA</fobCountry>
  </FobPoint>
  <FobPoint>
    <fobId>2</fobId>
    <fobCity>Cincinnati</fobCity>
    <fobState>OH</fobState>
    <fobPostalCode>45069</fobPostalCode>
    <fobCountry>USA</fobCountry>
  </FobPoint>
  <FobPoint>
    <fobId>5</fobId>
    <fobCity>Robbinsville</fobCity>
    <fobState>NJ</fobState>
    <fobPostalCode>08691</fobPostalCode>
    <fobCountry>USA</fobCountry>
  </FobPoint>
  <FobPoint>
    <fobId>12</fobId>
    <fobCity>Phoenix</fobCity>
    <fobState>AZ</fobState>
    <fobPostalCode>85323</fobPostalCode>
    <fobCountry>USA</fobCountry>
  </FobPoint>
  <FobPoint>
    <fobId>7</fobId>
    <fobCity>Minneapolis</fobCity>
    <fobState>MN</fobState>
    <fobPostalCode>55379</fobPostalCode>
    <fobCountry>USA</fobCountry>
  </FobPoint>
</FobPointArray>
</ns2:Product>
</ns2:GetProductResponse>
</S:Body>
</S:Envelope>
```

PromoStandards GetProductCloseOut V2.0.0 Service

This service returns a list of Product Ids and Part Ids for all items which are in SanMar **Discontinued** status.

PromoStandards GetProductCloseOut Data V2.0.0 Service Request Parameters

Field	Description	Example	Required	Type	Max Chars
wsVersion	Promostandard Version	2.0.0	Yes	STRING	64
id	SanMar.com Username	SanMarUsername	Yes	STRING	64
password	SanMar.com Password	SanMarPassword	Yes	STRING	64

PromoStandards GetProductCloseOut V2.0.0 Service XML Request

```
<soapenv:Envelope xmlns:soapenv="http://schemas.xmlsoap.org/soap/envelope/"
xmlns:ns="http://www.promostandards.org/WSDL/ProductDataService/2.0.0/" xmlns:
shar="http://www.promostandards.org/WSDL/ProductDataService/2.0.0/SharedObjects/">
  <soapenv:Header />
  <soapenv:Body>
    <ns:GetProductCloseOutRequest>
      <shar:wsVersion>2.0.0</shar:wsVersion>
      <shar:id>SanMarUsername</shar:id>
      <shar:password>SanMarPassword</shar:password>
    </ns:GetProductCloseOutRequest>
  </soapenv:Body>
</soapenv:Envelope>
```

PromoStandards GetProductCloseOut V2.0.0 Service Response Parameters

Field	Description	Example	Type	Max Chars
productId	SanMar Style #	PC61	STRING	64
partId	SanMar Unique_Key	179603	STRING	64

PromoStandards GetProduct Data V2.0.0 Service XML Response

```
<S:Envelope xmlns:S="http://schemas.xmlsoap.org/soap/envelope/">
  <S:Body>
    <ns2:GetProductCloseOutResponse xmlns:ns2="http://www.promostandards.
org/WSDL/ProductDataService/2.0.0/" xmlns="http://www.promostandards.
org/WSDL/ProductDataService/2.0.0/SharedObjects/">
      <ns2:ProductCloseOutArray>
        <ns2:ProductCloseOut>
          <productId>DM104CL</productId>
          <partId>764961</partId>
        </ns2:ProductCloseOut>
      </ns2:ProductCloseOutArray>
    </ns2:GetProductCloseOutResponse>
  </S:Body>
</S:Envelope>
```


PromoStandards GetProductDateModified V2.0.0 Service

This service returns a list of Product Id's and Part Id's for all items that have changed since the date provided in the request.

PromoStandards GetProductDateModified V2.0.0 Service Request Parameters

Field	Description	Example	Required	Type	Max Chars
wsVersion	Promostandard Version	2.0.0	Yes	STRING	64
id	SanMar.com Username	SanMarUsername	Yes	STRING	64
password	SanMar.com Password	SanMarPassword	Yes	STRING	64
changeTimeStamp		2017-12-12T00:00:00.000-08:00	Yes	ISO 8601	30

PromoStandards GetProductDateModified V2.0.0 Service XML Request

```
<soapenv:Envelope xmlns:soapenv="http://schemas.xmlsoap.org/soap/envelope/"
xmlns:ns="http://www.promostandards.org/WSDL/ProductDataService/2.0.0/" xmlns
:shar="http://www.promostandards.org/WSDL/ProductDataService/2.0.0/SharedObjects/">
  <soapenv:Header />
  <soapenv:Body>
    <ns:GetProductDateModifiedRequest>
      <shar:wsVersion>2.0.0</shar:wsVersion>
      <shar:id>SanMarUsername</shar:id>
      <shar:password>SanMarPassword</shar:password>
      <shar:changeTimeStamp>2017-12-12T00:00:00.000-
08:00</shar:changeTimeStamp>
    </ns:GetProductDateModifiedRequest>
  </soapenv:Body>
</soapenv:Envelope>
```

PromoStandards GetProductDateModified V2.0.0 Service Response Parameters

Field	Description	Example	Type	Max Chars
productId	SanMar Style #	PC61	STRING	64
partId	SanMar Unique_Key	179603	STRING	64

PromoStandards GetProductDateModified V2.0.0 Service XML Response

```
<S:Envelope xmlns:S="http://schemas.xmlsoap.org/soap/envelope/">
  <S:Body>
    <ns2:GetProductDateModifiedResponse xmlns:ns2="http://www.promostandards
      .org/WSDL/ProductDataService/2.0.0/"xmlns="http://www.
      promostandards.org/WSDL/ProductDataService/2.0.0/SharedObjects/">
      <ns2:ProductDateModifiedArray>
        <ns2:ProductDateModified>
          <productId>12000</productId>
          <partId>256202</partId>
        </ns2:ProductDateModified>
      </ns2:ProductDateModifiedArray>
    </ns2:GetProductDateModifiedResponse>
  </S:Body>
</S:Envelope>
```

PromoStandards GetProductSellable V2.0.0 Service

This service returns a list of Product Ids and Part Ids along with their status of available to sell (Sellable TRUE or False).

PromoStandards GetProductSellable V2.0.0 Request Parameters

Field	Description	Example	Required	Type	Max Chars
wsVersion	Promostandard Version	2.0.0	Yes	STRING	64
id	SanMar.com Username		Yes	STRING	64
password	SanMar.com Password		Yes	STRING	64
productId	SanMar Style #	PC61	No	STRING	64
partId	SanMar Unique_Key	179603	No	STRING	64
isSellable	True = sellable SKUs	true or false	True	STRING	64

PromoStandards GetProductSellable V2.0.0 Service XML Request

```
<soapenv:Envelope xmlns:soapenv="http://schemas.xmlsoap.org/soap/envelope/"
xmlns:ns="http://www.promostandards.org/WSDL/ProductDataService/2.0.0/" xmlns:
shar="http://www.promostandards.org/WSDL/ProductDataService/2.0.0/SharedObjects/">
  <soapenv:Header />
  <soapenv:Body>
    <ns:GetProductSellableRequest>
      <shar:wsVersion>2.0.0</shar:wsVersion>
      <shar:id>SanMarUsername</shar:id>
      <shar:password>SanMarPassword</shar:password>
      <shar:productId>LOG105</shar:productId>
      <shar:isSellable>true</shar:isSellable>
    </ns:GetProductSellableRequest>
  </soapenv:Body>
</soapenv:Envelope>
```

PromoStandards GetProductSellable V2.0.0 Service Response Parameters

Field	Description	Example	Type	Max Chars
productId	SanMar Style #	PC61	STRING	64
partId	SanMar Unique_Key	179603	STRING	64

PromoStandards GetProductSellable V2.0.0 Service XML Response

```
<S:Envelope xmlns:S="http://schemas.xmlsoap.org/soap/envelope/">
  <S:Body>
    <ns2:GetProductSellableResponse xmlns:ns2="http://www.promostandards.
      org/WSDL/ProductDataService/2.0.0/"xmlns="http://www.promostandards.
      org/WSDL/ProductDataService/2.0.0/SharedObjects/">
      <ns2:ProductSellableArray>
        <ns2:ProductSellable>
          <productId>LOG105</productId>
          <partId>583921</partId>
        </ns2:ProductSellable>
      </ns2:ProductSellableArray>
    </ns2:GetProductSellableResponse>
  </S:Body>
</S:Envelope>
```

PromoStandards - Media Content Services V1.1.0

EDEV: <https://edev-ws.sanmar.com:8080/promostandards/MediaContentServiceBinding?wsdl>

PRODUCTION: <https://ws.sanmar.com:8080/promostandards/MediaContentServiceBinding?wsdl>

There are two functions available for this web service. **Please note:** *SanMar does not support the `getMediaDateModified` service.*

getMediaContent
getMediaDateModified

PromoStandards getMediaContent Service

This service returns media content based off the media type in the request. SanMar Only Supports Image or Document Media Types, we do not support Audio or Video Media Types.

PromoStandards getMediaContent Service Request Parameters

Field	Description	Example	Required	Type	Max Chars
wsVersion	PromoStandards Version	1.1.0	Yes	STRING	64
id	SanMar.com Username	SanMarUsername	Yes	STRING	64
password	SanMar.com Password	SanMarPassword	Yes	STRING	64
cultureName	The language culture name. i.e. (language, units of measure, etc.) Null assumes en-US.	en-us	No	STRING	64
mediaType	The type of media to return: Image or Document.	Image or Document	Yes	STRING	
productId	SanMar Style #	PC61	Yes	STRING	64
partId	SanMar Unique_Key	179603	No	STRING	64
classType	1004 Swatch,1006 Primary,1007 Front, 1008 Rear,2001 High	1007	No	INT	

PromoStandards getMediaContent Service XML Request

```
<soapenv:Envelope xmlns:soapenv="http://schemas.xmlsoap.org/soap/envelope/"
xmlns:ns="http://www.promostandards.org/WSDL/MediaService/1.0.0/" xmlns:
shar="http://www.promostandards.org/WSDL/MediaService/1.0.0/SharedObjects/">
  <soapenv:Header />
  <soapenv:Body>
    <ns:GetMediaContentRequest>
      <shar:wsVersion>1.1.0</shar:wsVersion>
      <shar:id>SanMarUsername</shar:id>
      <shar:password>SanMarPassword</shar:password>
      <shar:cultureName />
      <shar:mediaType>Image</shar:mediaType>
      <shar:productId>K420</shar:productId>
      <shar:partId>92032</shar:partId>
      <ns:classType>?</ns:classType>
    </ns:GetMediaContentRequest>
  </soapenv:Body>
</soapenv:Envelope>
```

PromoStandards getMediaContent Service Response Parameters

Field	Description	Example	Type	Max Chars
productId	SanMar Style#	PC61	STRING	64
partId	SanMar Unique Key	175762	STRING	64
url	The URL to the media location.	https://cdnl.sanmar.com/catalog/images/K420.jpg	STRING	1024
mediaType	The type of media (i.e. Image, Document, etc.)	Image		64
classTypeIds	An array of ClassType objects that classify of the media	1006	STRING	64
classTypeName		Primary		
color	Color Name	Black	STRING	256
singlePart	Identifies whether the partId one to one corresponds with the image.	True	BOOLEAN	

PromoStandards getMediaContent Service XML Response

```

<S:Envelope xmlns:S="http://schemas.xmlsoap.org/soap/envelope/">
  <S:Body>
    <ns2:GetMediaContentResponse xmlns:ns2="http://www.promostandards.org/WSDL/MediaService/1.0.0/" xmlns="http://www.promostandards.org/WSDL/MediaService/1.0.0/SharedObjects/">
      <ns2:MediaContentArray>
        <ns2:MediaContent>
          <productId>K420</productId>
          <partId>92032</partId>
          <ns2:url>https://cdnm.sanmar.com/imglib/mresjpg/K420_Black_back_FS06.jpg</ns2:url>
          <mediaType>Image</mediaType>
          <ns2:ClassTypeArray>
            <ns2:ClassType>
              <ns2:classTypeId>1008</ns2:classTypeId>
              <ns2:classTypeName>Rear</ns2:classTypeName>
            </ns2:ClassType>
          </ns2:ClassTypeArray>
          <ns2:color>Black</ns2:color>
          <ns2:singlePart>true</ns2:singlePart>
        </ns2:MediaContent>
        <ns2:MediaContent>
          <productId>K420</productId>
          <partId>92032</partId>
          <ns2:url>https://cdnm.sanmar.com/imglib/mresjpg/K420_Black_front_FS06.jpg</ns2:url>
          <mediaType>Image</mediaType>
          <ns2:ClassTypeArray>
            <ns2:ClassType>
              <ns2:classTypeId>1007</ns2:classTypeId>
              <ns2:classTypeName>Front</ns2:classTypeName>
            </ns2:ClassType>
          </ns2:ClassTypeArray>
          <ns2:color>Black</ns2:color>
          <ns2:singlePart>true</ns2:singlePart>
        </ns2:MediaContent>
        <ns2:MediaContent>
          <productId>K420</productId>
          <partId>92032</partId>
          <ns2:url>https://cdnm.sanmar.com/catalog/images/K420.jpg</ns2:url>
          <mediaType>Image</mediaType>
          <ns2:ClassTypeArray>
            <ns2:ClassType>
              <ns2:classTypeId>1006</ns2:classTypeId>
              <ns2:classTypeName>Primary</ns2:classTypeName>
            </ns2:ClassType>
          </ns2:ClassTypeArray>
          <ns2:color>Black</ns2:color>
          <ns2:singlePart>true</ns2:singlePart>
        </ns2:MediaContent>
        <ns2:MediaContent>

```


PromoStandards getMediaContent Service XML Response

```

<productId>K420</productId>
<partId>92032</partId>
<ns2:url>https://cdnm.sanmar.com/catalog/images/K420sw.jpg</ns2:url>
<mediaType>Image</mediaType>
<ns2:ClassTypeArray>
  <ns2:ClassType>
    <ns2:classTypeId>1004</ns2:classTypeId>
    <ns2:classTypeName>Swatch</ns2:classTypeName>
  </ns2:ClassType>
</ns2:ClassTypeArray>
<ns2:color>Black</ns2:color>
<ns2:singlePart>true</ns2:singlePart>
</ns2:MediaContent>
<ns2:MediaContent>
  <productId>K420</productId>
  <partId>92032</partId>
  <ns2:url>https://cdnm.sanmar.com/imglib/mresjpg/2014/f13/
  K420_black_model_side_072014.jpg</ns2:url>
  <mediaType>Image</mediaType>
  <ns2:ClassTypeArray>
    <ns2:ClassType>
      <ns2:classTypeId>500</ns2:classTypeId>
      <ns2:classTypeName>Custom</ns2:classTypeName>
    </ns2:ClassType>
  </ns2:ClassTypeArray>
  <ns2:color>Black</ns2:color>
  <ns2:singlePart>true</ns2:singlePart>
</ns2:MediaContent>
<ns2:MediaContent>
  <productId>K420</productId>
  <partId>92032</partId>
  <ns2:url>https://cdnm.sanmar.com/imglib/mresjpg/2014/f13/
  K420_black_model_back_072014.jpg</ns2:url>
  <mediaType>Image</mediaType>
  <ns2:ClassTypeArray>
    <ns2:ClassType>
      <ns2:classTypeId>502</ns2:classTypeId>
      <ns2:classTypeName>Custom</ns2:classTypeName>
    </ns2:ClassType>
  </ns2:ClassTypeArray>
  <ns2:color>Black</ns2:color>
  <ns2:singlePart>true</ns2:singlePart>
</ns2:MediaContent>
<ns2:MediaContent>
  <productId>K420</productId>
  <partId>92032</partId>
  <ns2:url>https://cdnm.sanmar.com/imglib/mresjpg/2015/f18/
  K420_L420_Y420_model_GA16.jpg</ns2:url>
  <mediaType>Image</mediaType>
  <ns2:ClassTypeArray>
    <ns2:ClassType>

```

PromoStandards getMediaContent Service XML Response

```

        <ns2:classTypeId>503</ns2:classTypeId>
        <ns2:classTypeName>Custom</ns2:classTypeName>
    </ns2:ClassType>
</ns2:ClassTypeArray>
<ns2:color>Black</ns2:color>
<ns2:singlePart>true</ns2:singlePart>
</ns2:MediaContent>
<ns2:MediaContent>
    <productId>K420</productId>
    <partId>92032</partId>
    <ns2:url>https://cdnm.sanmar.com/swatch/gifs/port_black.gif</ns2:url>
    <mediaType>Image</mediaType>
    <ns2:ClassTypeArray>
        <ns2:ClassType>
            <ns2:classTypeId>504</ns2:classTypeId>
            <ns2:classTypeName>Custom</ns2:classTypeName>
        </ns2:ClassType>
    </ns2:ClassTypeArray>
    <ns2:color>Black</ns2:color>
    <ns2:singlePart>true</ns2:singlePart>
</ns2:MediaContent>
<ns2:MediaContent>
    <productId>K420</productId>
    <partId>92032</partId>
    <ns2:url>https://cdnm.sanmar.com/imglib/mresjpg/2014/f17/
    K420_black_model_front_072014.jpg</ns2:url>
    <mediaType>Image</mediaType>
    <ns2:ClassTypeArray>
        <ns2:ClassType>
            <ns2:classTypeId>2001</ns2:classTypeId>
            <ns2:classTypeName>High</ns2:classTypeName>
        </ns2:ClassType>
    </ns2:ClassTypeArray>
    <ns2:color>Black</ns2:color>
    <ns2:singlePart>true</ns2:singlePart>
</ns2:MediaContent>
</ns2:MediaContentArray>
</ns2:GetMediaContentResponse>
</S:Body>
</S:Envelope>

```

SanMar Product Inventory Service

EDEV: <https://edev-ws.sanmar.com:8080/SanMarWebService/SanMarWebServicePort?wsdl>

PRODUCTION: <https://ws.sanmar.com:8080/SanMarWebService/SanMarWebServicePort?wsdl>

There are two functions available for this web service.

getInventoryQtyForStyleColorSize
getInventoryQtyForStyleColorSizeByWhse

This call now supports queries at the Style, Style /Color and Style/Size level. This method can help with reducing call volume and allowing a bulk call and response when updating product Inventory information in your system.

Warehouse Locations

WhseNo	City	State
1	Seattle	WA
2	Cincinnati	OH
3	Dallas	TX
4	Reno	NV
5	Robbinsville	NJ
6	Jacksonville	FL
7	Minneapolis	MN
12	Phoenix	AZ
31	Richmond	VA

SanMar getInventoryQtyForStyleColorSize Service

This service returns a list of available quantities from all warehouses for the requested product. The return will display inventory by warehouse information in descending warehouse numerical order.

Please Note: this service uses the Catalog_Color / Mainframe_Color in the query, not the Color_Name field.

SanMar getInventoryQtyForStyleColorSize Service Request Parameters

Field	Description	Example	Type	Required
arg3	Style	K500	STRING	Y
arg4	Catalog Color / Mainframe Color	Black	STRING	N
arg5	Size	XL	STRING	N

SanMar getInventoryQtyForStyleColorSize Service XML Request (by Style / Color / Size)

```
<soapenv:Envelope xmlns:soapenv="http://schemas.xmlsoap.org/soap/envelope/"
xmlns:web="http://webservice.integration.sanmar.com/">
  <soapenv:Header />
  <soapenv:Body>
    <web:getInventoryQtyForStyleColorSize>
      <arg0>SanMarCustomerNumber</arg0>
      <arg1>SanMarUsername</arg1>
      <arg2>SanMarPassword</arg2>
      <arg3>L223</arg3>
      <arg4>Pearl Grey</arg4>
      <arg5>L</arg5>
    </web:getInventoryQtyForStyleColorSize>
  </soapenv:Body>
</soapenv:Envelope>
```

SanMar getInventoryQtyForStyleColorSize Service XML Response

*The return will display inventory by warehouse information in descending warehouse numerical order.

```
<S:Envelope xmlns:S="http://schemas.xmlsoap.org/soap/envelope/">
  <S:Body>
    <ns2:getInventoryQtyForStyleColorSizeResponse xmlns:ns2=
      "http://webservice.integration.sanmar.com/">
      <return>
        <errorOccurred>false</errorOccurred>
        <listResponse xmlns:xs="http://www.w3.org/2001/XMLSchema"
          xmlns:xsi="http://www.w3.org/2001/XMLSchema-instance"
          xsi:type="xs:int">92</listResponse>
        <listResponse xmlns:xs="http://www.w3.org/2001/XMLSchema"
          xmlns:xsi="http://www.w3.org/2001/XMLSchema-instance"
          xsi:type="xs:int">547</listResponse>
        <listResponse xmlns:xs="http://www.w3.org/2001/XMLSchema"
          xmlns:xsi="http://www.w3.org/2001/XMLSchema-instance"
          xsi:type="xs:int">1052</listResponse>
        <listResponse xmlns:xs="http://www.w3.org/2001/XMLSchema"
          xmlns:xsi="http://www.w3.org/2001/XMLSchema-instance"
          xsi:type="xs:int">0</listResponse>
        <listResponse xmlns:xs="http://www.w3.org/2001/XMLSchema"
          xmlns:xsi="http://www.w3.org/2001/XMLSchema-instance"
          xsi:type="xs:int">1061</listResponse>
        <listResponse xmlns:xs="http://www.w3.org/2001/XMLSchema"
          xmlns:xsi="http://www.w3.org/2001/XMLSchema-instance"
          xsi:type="xs:int">351</listResponse>
        <listResponse xmlns:xs="http://www.w3.org/2001/XMLSchema"
          xmlns:xsi="http://www.w3.org/2001/XMLSchema-instance"
          xsi:type="xs:int">1372</listResponse>
        <listResponse xmlns:xs="http://www.w3.org/2001/XMLSchema"
          xmlns:xsi="http://www.w3.org/2001/XMLSchema-instance"
          xsi:type="xs:int">11</listResponse>
        <message>Inventory returned successfully</message>
      </return>
    </ns2:getInventoryQtyForStyleColorSizeResponse>
  </S:Body>
</S:Envelope>
```

SanMar getInventoryQtyForStyleColorSize Service XML Request (by Style)

```
<soapenv:Envelope xmlns:soapenv="http://schemas.xmlsoap.org/soap/envelope/"
xmlns:web="http://webservice.integration.sanmar.com/">
  <soapenv:Header />
  <soapenv:Body>
    <web:getInventoryQtyForStyleColorSize>
      <arg0>SanMarCustomerNumber</arg0>
      <arg1>SanMarUsername</arg1>
      <arg2>SanMarPassword</arg2>
      <arg3>L223</arg3>
    </web:getInventoryQtyForStyleColorSize>
  </soapenv:Body>
</soapenv:Envelope>
```

SanMar getInventoryQtyForStyleColorSize Service XML Response

This return format will apply to calls by Style, Style/Color and Style/Size.

```
<S:Envelope xmlns:S="http://schemas.xmlsoap.org/soap/envelope/">
  <S:Body>
    <ns2:getInventoryQtyForStyleColorSizeResponse xmlns:ns2=
"http://webservice.integration.sanmar.com/">
      <return>
        <errorOccurred>false</errorOccurred>
        <message>Inventory returned successfully</message>
        <response xmlns:xsi="http://www.w3.org/2001/XMLSchema-instance"
xsi:type="ns2:Inventory">
          <style>L223</style>
          <skus>
            <sku>
              <color>Amethyst Purpl</color>
              <size>XS</size>
              <whse>
                <whseID>1</whseID>
                <whseName>Seattle</whseName>
                <qty>17</qty>
              </whse>
              <whse>
                <whseID>2</whseID>
                <whseName>Cincinnati</whseName>
                <qty>56</qty>
              </whse>
              <whse>
                <whseID>3</whseID>
                <whseName>Dallas</whseName>
                <qty>45</qty>
              </whse>
            </sku>
          </skus>
        </response>
      </return>
    </ns2:getInventoryQtyForStyleColorSizeResponse>
  </S:Body>
</S:Envelope>
```

SanMar getInventoryQtyForStyleColorSize Service XML Response Continued

```

        <qty>12</qty>
    </whse>
    <whse>
        <whseID>5</whseID>
        <whseName>Robbinsville</whseName>
        <qty>7</qty>
    </whse>
    <whse>
        <whseID>6</whseID>
        <whseName>Jacksonville</whseName>
        <qty>26</qty>
    </whse>
    <whse>
        <whseID>7</whseID>
        <whseName>Minneapolis</whseName>
        <qty>45</qty>
    </whse>
    <whse>
        <whseID>12</whseID>
        <whseName>Phoenix</whseName>
        <qty>23</qty>
    </whse>
</sku>
<sku>
    <color>Amethyst Purpl</color>
    <size>S</size>
    <whse>
        <whseID>1</whseID>
        <whseName>Seattle</whseName>
        <qty>20</qty>
    </whse>
</sku>
--truncated--
</skus>
</response>
</return>
</ns2:getInventoryQtyForStyleColorSizeResponse>
</S:Body>
</S:Envelope>

```

SanMar getInventoryQtyForStyleColorSizeByWhse Service

This service returns a list of available quantities from all warehouses for the requested product and warehouse. Please refer to previous call examples for Style, Style/Color and Style/Size returns.

SanMar getInventoryQtyForStyleColorSizeByWhse Service Request Parameters

Field	Description	Example	Type	Required
arg3	Style	K500	STRING	Y
arg4	Catalog Color / Mainframe Color	Black	STRING	N
arg5	Size	XL	STRING	N
arg6	Warehouse Number	3	STRING	Y

SanMar getInventoryQtyForStyleColorSizeByWhse Service XML Request

```
<soapenv:Envelope xmlns:soapenv="http://schemas.xmlsoap.org/soap/envelope/"
xmlns:web="http://webservice.integration.sanmar.com/">
  <soapenv:Header />
  <soapenv:Body>
    <web:getInventoryQtyForStyleColorSize>
      <arg0>SanMarCustomerNumber</arg0>
      <arg1>SanMarUsername</arg1>
      <arg2>SanMarPassword</arg2>
      <arg3>K500</arg3>
      <arg4>Black</arg4>
      <arg5>XL</arg5>
      <arg6>3</arg6>
    </web:getInventoryQtyForStyleColorSize>
  </soapenv:Body>
</soapenv:Envelope>
```

SanMar getInventoryQtyForStyleColorSizeByWhse Service XML Response

```
<S:Envelope xmlns:S="http://schemas.xmlsoap.org/soap/envelope/">
  <S:Body>
    <ns2:getInventoryQtyForStyleColorSizeByWhseResponse
xmlns:ns2="http://webservice.integration.sanmar.com/">
      <return>
        <errorOccurred>false</errorOccurred>
        <message>Inventory returned successfully</message>
        <response xmlns:xs="http://www.w3.org/2001/XMLSchema" xmlns:xsi=
"http://www.w3.org/2001/XMLSchema-instance" xsi:type="xs:int">1500
        </response>
      </return>
    </ns2:getInventoryQtyForStyleColorSizeByWhseResponse>
  </S:Body>
</S:Envelope>
```


PromoStandards – Inventory Services V2.0.0

EDEV: <https://edev-ws.sanmar.com:8080/promostandards/InventoryServiceBindingV2final?WSDL>

PRODUCTION: <https://ws.sanmar.com:8080/promostandards/InventoryServiceBindingV2final?WSDL>

There is one function available for this web service. **Please Note:** *SanMar does not support `getFilterValues`.*

`getInventoryLevels`

PromoStandards getInventoryLevels V 2.0.0 Service

This service returns product inventory levels for each warehouse. There are 3 query types for this service (listed below).

PromoStandards getInventoryLevels V 2.0.0 Service Request Parameters

Field	Description	Example	Required	Type	Max Chars
productId	Style Number	K420	Yes	VARCHAR	64
labelSize	Product Size	s, m, 3XL	No	VARCHAR	64
partColor	Product Catalog Color Name	white	No	VARCHAR	64

PromoStandards getInventoryLevels V 2.0.0 XML Request Queries

There are 3 query types for this call.

Query Type 1: Search Inventory by productId, labelSize, and partColor:

```
<soapenv:Envelope xmlns:soapenv="http://schemas.xmlsoap.org/soap/envelope/"
xmlns:ns="http://www.promostandards.org/WSDL/Inventory/2.0.0/"
xmlns:shar="http://www.promostandards.org/WSDL/Inventory/2.0.0/SharedObjects/">
  <soapenv:Header />
  <soapenv:Body>
    <ns:GetInventoryLevelsRequest>
      <shar:wsVersion>2.0.0</shar:wsVersion>
      <shar:id>SanMarUsername</shar:id>
      <shar:password>SanMarPassword</shar:password>
      <shar:productId>k420</shar:productId>
      <shar:Filter>
        <shar:LabelSizeArray>
          <shar:labelSize>s</shar:labelSize>
        </shar:LabelSizeArray>
        <shar:PartColorArray>
          <shar:partColor>white</shar:partColor>
        </shar:PartColorArray>
      </shar:Filter>
    </ns:GetInventoryLevelsRequest>
  </soapenv:Body>
</soapenv:Envelope>
```

Query Type 2: Search Inventory by productid:

```
<soapenv:Envelope xmlns:soapenv="http://schemas.xmlsoap.org/soap/envelope/"
xmlns:ns="http://www.promostandards.org/WSDL/Inventory/2.0.0/"
xmlns:shar="http://www.promostandards.org/WSDL/Inventory/2.0.0/SharedObjects/">
  <soapenv:Header />
  <soapenv:Body>
    <ns:GetInventoryLevelsRequest>
      <shar:wsVersion>2.0.0</shar:wsVersion>
      <shar:id>SanMarUsername</shar:id>
      <shar:password>SanMarPassword</shar:password>
      <shar:productId>k420</shar:productId>
    </ns:GetInventoryLevelsRequest>
  </soapenv:Body>
</soapenv:Envelope>
```

Query Type 3: Search Inventory by partIdArray

This call no longer requires the ProductId and PartId to match; however, a valid ProductId must be supplied but will not be used as part of your search criteria if you supply PartId(s). The maximum amount of PartId's you can supply per call is 200.

Using multiple PartId's can be useful if you are checking inventory as part of a checkout workflow process, as you can batch the entire contents of the cart into one call by PartId(s) rather than submitting individual queries for each ProductId.

Example: Check stock for 3 products: C855 Mossy Oak (295993), JST81 True Navy L (647554), DT192 Marled Black M (678183)

Previous Process: You would need to submit 3 calls, one for each product ID / Part ID combination.	Updated Process: You can submit one call for all 3 PartID's (<u>Please note a valid Product ID must be contained within the call</u>)
<p>Call#1 <shar:productId>C855</shar:productId> <shar:Filter> <shar:partIdArray> <shar:partId>295993</shar:partId> </shar:partIdArray> </shar:Filter></p> <p>Call#2 <shar:productId>JST81</shar:productId> <shar:Filter> <shar:partIdArray> <shar:partId>647554</shar:partId> </shar:partIdArray> </shar:Filter></p> <p>Call#3 <shar:productId>DT192</shar:productId> <shar:Filter> <shar:partIdArray> <shar:partId>678183</shar:partId> </shar:partIdArray> </shar:Filter></p>	<p>Call#1 <shar:productId>ST500</shar:productId> <shar:Filter> <shar:partIdArray> <shar:partId>295993</shar:partId> <shar:partId>647554</shar:partId> <shar:partId>678183</shar:partId> </shar:partIdArray> </shar:Filter></p>

PromoStandards getInventoryLevels V 2.0.0 XML Request Using the partIdArray

The following example demonstrates an API call to the getInventoryLevels method for Style K420 / Brown for small and medium. Small is represented by partId 92032, while medium is represented by partId 92033.

PromoStandards Inventory V2.0.0 partIdArray XML Request:

```
<soapenv:Envelope xmlns:soapenv="http://schemas.xmlsoap.org/soap/envelope/"
xmlns:ns="http://www.promostandards.org/WSDL/Inventory/2.0.0/"
xmlns:shar="http://www.promostandards.org/WSDL/Inventory/2.0.0/SharedObjects/">
  <soapenv:Header />
  <soapenv:Body>
    <ns:GetInventoryLevelsRequest>
      <shar:wsVersion>2.0.0</shar:wsVersion>
      <shar:id>SanMarUsername</shar:id>
      <shar:password>SanMarPassword</shar:password>
      <shar:productId>k420</shar:productId>
      <shar:Filter>
        <shar:partIdArray>
          <!--1 or more repetitions:-->
          <shar:partId>92032</shar:partId>
          <shar:partId>92033</shar:partId>
        </shar:partIdArray>
      </shar:Filter>
    </ns:GetInventoryLevelsRequest>
  </soapenv:Body>
</soapenv:Envelope>
```

PromoStandards Inventory V2.0.0 partIdArray XML Response

```

<S:Envelope xmlns:S="http://schemas.xmlsoap.org/soap/envelope/">
  <S:Body>
    <ns2:GetInventoryLevelsResponse xmlns:ns2="http://www.promostandards.org/WSDL/Inventory/2.0.0" xmlns="http://www.promostandards.org/WSDL/Inventory/2.0.0/SharedObjects/">
      <Inventory>
        <productId>k420</productId>
        <PartInventoryArray>
          <PartInventory>
            <partId>92032</partId>
            <mainPart>>false</mainPart>
            <partColor>Black</partColor>
            <labelSize>S</labelSize>
            <partDescription>Port Authority Heavyweight Cotton Pique Polo. K420</partDescription>
            <quantityAvailable>
              <Quantity>
                <uom>EA</uom>
                <value>1045</value>
              </Quantity>
            </quantityAvailable>
            <manufacturedItem>>false</manufacturedItem>
            <buyToOrder>>false</buyToOrder>
            <InventoryLocationArray>
              <InventoryLocation>
                <inventoryLocationId>1</inventoryLocationId>
                <inventoryLocationName>Seattle</inventoryLocationName>
                <postalCode>98027</postalCode>
                <country>US</country>
                <inventoryLocationQuantity>
                  <Quantity>
                    <uom>EA</uom>
                    <value>0</value>
                  </Quantity>
                </inventoryLocationQuantity>
              </InventoryLocation>
              <InventoryLocation>
                <inventoryLocationId>2</inventoryLocationId>
                <inventoryLocationName>Cincinnati</inventoryLocationName>
                <postalCode>45069</postalCode>
                <country>US</country>
                <inventoryLocationQuantity>
                  <Quantity>
                    <uom>EA</uom>
                    <value>167</value>
                  </Quantity>
                </inventoryLocationQuantity>
              </InventoryLocation>
              <InventoryLocation>
                <inventoryLocationId>3</inventoryLocationId>
                <inventoryLocationName>Dallas</inventoryLocationName>

```

PromoStandards Inventory V2.0.0 partIdArray XML Response

```

    <postalCode>75038</postalCode>
    <country>US</country>
    <inventoryLocationQuantity>
      <Quantity>
        <uom>EA</uom>
        <value>179</value>
      </Quantity>
    </inventoryLocationQuantity>
  </InventoryLocation>
<InventoryLocation>
  <inventoryLocationId>4</inventoryLocationId>
  <inventoryLocationName>Reno</inventoryLocationName>
  <postalCode>89441</postalCode>
  <country>US</country>
  <inventoryLocationQuantity>
    <Quantity>
      <uom>EA</uom>
      <value>161</value>
    </Quantity>
  </inventoryLocationQuantity>
</InventoryLocation>
<InventoryLocation>
  <inventoryLocationId>5</inventoryLocationId>
  <inventoryLocationName>Robbinsville</inventoryLocationName>
  <postalCode>08691</postalCode>
  <country>US</country>
  <inventoryLocationQuantity>
    <Quantity>
      <uom>EA</uom>
      <value>182</value>
    </Quantity>
  </inventoryLocationQuantity>
</InventoryLocation>
<InventoryLocation>
  <inventoryLocationId>6</inventoryLocationId>
  <inventoryLocationName>Jacksonville</inventoryLocationName>
  <postalCode>32219</postalCode>
  <country>US</country>
  <inventoryLocationQuantity>
    <Quantity>
      <uom>EA</uom>
      <value>54</value>
    </Quantity>
  </inventoryLocationQuantity>
</InventoryLocation>
<InventoryLocation>
  <inventoryLocationId>7</inventoryLocationId>
  <inventoryLocationName>Minneapolis</inventoryLocationName>
  <postalCode>55379</postalCode>
  <country>US</country>
  <inventoryLocationQuantity>

```

PromoStandards Inventory V2.0.0 partIdArray XML Response

```

        <Quantity>
          <uom>EA</uom>
          <value>143</value>
        </Quantity>
      </inventoryLocationQuantity>
    </InventoryLocation>
  <InventoryLocation>
    <inventoryLocationId>12</inventoryLocationId>
    <inventoryLocationName>Phoenix</inventoryLocationName>
    <postalCode>85323</postalCode>
    <country>US</country>
    <inventoryLocationQuantity>
      <Quantity>
        <uom>EA</uom>
        <value>159</value>
      </Quantity>
    </inventoryLocationQuantity>
  </InventoryLocation>
</InventoryLocationArray>
</PartInventory>
<PartInventory>
  <partId>92033</partId>
  <mainPart>>false</mainPart>
  <partColor>Black</partColor>
  <labelSize>M</labelSize>
  <quantityAvailable>
    <Quantity>
      <uom>EA</uom>
      <value>3814</value>
    </Quantity>
  </quantityAvailable>
  <manufacturedItem>>false</manufacturedItem>
  <buyToOrder>>false</buyToOrder>
  <InventoryLocationArray>
    <InventoryLocation>
      <inventoryLocationId>1</inventoryLocationId>
      <inventoryLocationName>Seattle</inventoryLocationName>
      <postalCode>98027</postalCode>
      <country>US</country>
      <inventoryLocationQuantity>
        <Quantity>
          <uom>EA</uom>
          <value>215</value>
        </Quantity>
      </inventoryLocationQuantity>
    </InventoryLocation>
    <InventoryLocation>
      <inventoryLocationId>2</inventoryLocationId>
      <inventoryLocationName>Cincinnati</inventoryLocationName>
      <postalCode>45069</postalCode>
      <country>US</country>

```


PromoStandards Inventory V2.0.0 partIdArray XML Response

```

    <inventoryLocationQuantity>
      <Quantity>
        <uom>EA</uom>
        <value>342</value>
      </Quantity>
    </inventoryLocationQuantity>
  </InventoryLocation>
<InventoryLocation>
  <inventoryLocationId>3</inventoryLocationId>
  <inventoryLocationName>Dallas</inventoryLocationName>
  <postalCode>75038</postalCode>
  <country>US</country>
  <inventoryLocationQuantity>
    <Quantity>
      <uom>EA</uom>
      <value>521</value>
    </Quantity>
  </inventoryLocationQuantity>
</InventoryLocation>
<InventoryLocation>
  <inventoryLocationId>4</inventoryLocationId>
  <inventoryLocationName>Reno</inventoryLocationName>
  <postalCode>89441</postalCode>
  <country>US</country>
  <inventoryLocationQuantity>
    <Quantity>
      <uom>EA</uom>
      <value>436</value>
    </Quantity>
  </inventoryLocationQuantity>
</InventoryLocation>
<InventoryLocation>
  <inventoryLocationId>5</inventoryLocationId>
  <inventoryLocationName>Robbinsville</inventoryLocationName>
  <postalCode>08691</postalCode>
  <country>US</country>
  <inventoryLocationQuantity>
    <Quantity>
      <uom>EA</uom>
      <value>1246</value>
    </Quantity>
  </inventoryLocationQuantity>
</InventoryLocation>
<InventoryLocation>
  <inventoryLocationId>6</inventoryLocationId>
  <inventoryLocationName>Jacksonville</inventoryLocationName>
  <postalCode>32219</postalCode>
  <country>US</country>
  <inventoryLocationQuantity>
    <Quantity>
      <uom>EA</uom>

```

PromoStandards Inventory V2.0.0 partIdArray XML Response

```

        <value>321</value>
      </Quantity>
    </inventoryLocationQuantity>
  </InventoryLocation>
  <InventoryLocation>
    <inventoryLocationId>7</inventoryLocationId>
    <inventoryLocationName>Minneapolis</inventoryLocationName>
    <postalCode>55379</postalCode>
    <country>US</country>
    <inventoryLocationQuantity>
      <Quantity>
        <uom>EA</uom>
        <value>425</value>
      </Quantity>
    </inventoryLocationQuantity>
  </InventoryLocation>
  <InventoryLocation>
    <inventoryLocationId>12</inventoryLocationId>
    <inventoryLocationName>Phoenix</inventoryLocationName>
    <postalCode>85323</postalCode>
    <country>US</country>
    <inventoryLocationQuantity>
      <Quantity>
        <uom>EA</uom>
        <value>308</value>
      </Quantity>
    </inventoryLocationQuantity>
  </InventoryLocation>
</InventoryLocationArray>
</PartInventory>
</PartInventoryArray>
</Inventory>
</ns2:GetInventoryLevelsResponse>
</S:Body>
</S:Envelope>

```

SanMar Pricing Service

EDEV: <https://edev-ws.sanmar.com:8080/SanMarWebService/SanMarPricingServicePort?wsdl>

PRODUCTION: <https://ws.sanmar.com:8080/SanMarWebService/SanMarPricingServicePort?wsdl>

There is one function available for this web service.

getPricing

SanMar getPricing Service

This service returns product pricing including piece, dozen, case, sale, and my price (customer specific pricing). Request input parameters can include STYLE#/CATALOG COLOR and/or SIZE, or INVENTORY_KEY/SIZE_INDEX. Each getPricing submission can contain a single or multiple pricing requests.

SanMar getPricing Service Request Parameters with the Style/Color/Size

Field	Description	Example	Required	Type
style	Style number	K500	Yes	STRING
color	Catalog Color	Black	No	STRING
size	Size	XL	No	STRING

SanMar getPricing Service Request Parameters with the Inventory Key and Size Index

Field	Description	Required	Type
inventoryKey	SanMar inventory key	Yes	STRING
sizeIndex	SanMar size index	Yes	STRING

SanMar getPricing Service XML Request

The following demonstrates an API call to the getPricing method for style LPC61, color Lime, and size medium (M). You can submit just the style number to retrieve all the SKU's for the style.

```
<soapenv:Envelope xmlns:soapenv="http://schemas.xmlsoap.org/soap/envelope/"
xmlns:impl="http://impl.webservice.integration.sanmar.com/">
  <soapenv:Header />
  <soapenv:Body>
    <impl:getPricing>
      <arg0>
        <casePrice />
        <color>lime</color>
        <dozenPrice />
        <inventoryKey />
        <myPrice />
        <piecePrice />
        <salePrice />
        <size>m</size>
        <sizeIndex />
        <style>lpc61</style>
      </arg0>
      <arg1>
        <sanMarCustomerNumber>SanMarCustomerNumber</sanMarCustomerNumber>
        <sanMarUserName>SanMarUsername</sanMarUserName>
        <sanMarUserPassword>SanMarPassword</sanMarUserPassword>
      </arg1>
    </impl:getPricing>
  </soapenv:Body>
</soapenv:Envelope>
```

SanMar getPricing Service XML Response

```
<S:Envelope xmlns:S="http://schemas.xmlsoap.org/soap/envelope/">
  <S:Body>
    <ns2:getPricingResponse
      xmlns:ns2="http://impl.webservice.integration.sanmar.com/">
      <return>
        <errorOccurred>false</errorOccurred>
        <listResponse xmlns:xsi="http://www.w3.org/2001/XMLSchema-instance"
          xsi:type="ns2:item">
          <casePrice>2.59</casePrice>
          <color>lime</color>
          <dozenPrice>3.59</dozenPrice>
          <inventoryKey>46389</inventoryKey>
          <myPrice>1.76</myPrice>
          <piecePrice>3.59</piecePrice>
          <salePrice>1.99</salePrice>
          <size>m</size>
          <sizeIndex>3</sizeIndex>
          <style>lpc61</style>
          <saleStartDate>2017-06-26</saleStartDate>
          <saleEndDate>2017-07-02</saleEndDate>
          <incentivePrice>1.76</incentivePrice>
        </listResponse>
        <message>Pricing returned successfully</message>
      </return>
    </ns2:getPricingResponse>
  </S:Body>
</S:Envelope>
```

PromoStandards - Pricing and Configuration Services

EDEV: <https://edev-ws.sanmar.com:8080/promostandards/PricingAndConfigurationServiceBinding?WSDL>

PRODUCTION: <https://ws.sanmar.com:8080/promostandards/PricingAndConfigurationServiceBinding?WSDL>

There are two functions available for this web service.

getConfigurationAndPricing

getFobPoints

PromoStandards getConfigurationAndPricing Service

This service returns Net, List or Customer pricing. Net price is the customers cost, List price is the suggested pricing (A or R coded) and Customer specific (TVBP/special) pricing.

PromoStandards getConfigurationAndPricing Request Parameters

Field	Description	Example	Required	Type	Max Chars
wsVersion	PromoStandard Version	1.0.0	Yes	VARCHAR	64
id	SanMar.com Username	SanMarUsername	Yes	Yes	STRING
password	SanMar.com Password	SanMarPassword	Yes	Yes	STRING
productID	Style Number	K500	Yes	VARCHAR	64
partId	Unique Key	240831	No	VARCHAR	64
currency	Enter only: USD	USD	Yes	VARCHAR	64
fobId	FOB/Warehouse #	1-7, 12, 31	Yes	VARCHAR	64
priceType	The requested price type.	Net(Cost), List(MSRP) or Customer (Special pricing)	Yes	VARCHAR	64
localizationCountry	Enter only: US	US	Yes	VARCHAR	2
localizationLanguage	Enter only: EN	EN	Yes	VARCHAR	2
configurationType	Enter only: Blank	Blank	Yes	VARCHAR	12

PromoStandards getConfigurationAndPricing Service XML Request

```
<soapenv:Envelope xmlns:soapenv="http://schemas.xmlsoap.org/soap/envelope/"
xmlns:ns="http://www.promostandards.org/WSDL/PricingAndConfiguration/1.0.0/"
xmlns:shar="http://www.promostandards.org/WSDL/PricingAndConfiguration/1.0.0/SharedObjects/">
  <soapenv:Header />
  <soapenv:Body>
    <ns:GetConfigurationAndPricingRequest>
      <shar:wsVersion>1.0.0</shar:wsVersion>
      <shar:id>SanMarUsername</shar:id>
      <shar:password>SanMarPassword</shar:password>
      <shar:productId>K500</shar:productId>
      <shar:partId>240831</shar:partId>
      <shar:currency>USD</shar:currency>
      <shar:fobId>6</shar:fobId>
      <shar:priceType>Net</shar:priceType>
      <shar:localizationCountry>US</shar:localizationCountry>
      <shar:localizationLanguage>EN</shar:localizationLanguage>
      <shar:configurationType>Blank</shar:configurationType>
    </ns:GetConfigurationAndPricingRequest>
  </soapenv:Body>
</soapenv:Envelope>
```


PromoStandards getConfigurationAndPricing Service Response Parameters

Field	Description	Type	Max Chars
partId	Unique Key	VARCHAR	64
minQuantity	The minimum quantity for the price break	INT	
price	The base price of the good without decoration	DECIMAL	12, 4
priceUom	Enumerated list of units of measure used to describe the price. Values are: {BX, CA, DZ, EA, KT, PR, PK, RL, ST, SL, TH} BX – Box CA – Case DZ – Dozen EA – Each KT – Kit PR – Pair PK – Package RL – Roll ST – Set SL – Sleeve TH - Thousand	VARCHAR (2)	2
priceEffectiveDate	The date the price is effective in ISO8601 format.	DATE	
priceExpiryDate	The date the price is no longer effective in ISO8601 format.	DATE	
partGroup	A numeric identifier grouping mutually exclusive parts together. When configuring data, always start with part group “1”	INT	
partGroupRequired	A boolean value specifying if this partGroup is required for the product configuration. If set to TRUE, a selection in the partGroup is required for ordering.	BOOLEAN	
partGroupDescription	A description of the partGroup. Examples: “Main Product”, “Optional Lid”, “Straw”, etc.	VARCHAR	64
ratio	Describes how the amount of partIds that need to be added to the order based on the number of products ordered.	DECIMAL (12,4)	12,4
defaultPart	This part is included in the “Basic Pricing Configuration” service price. This field is optional.	BOOLEAN	
productID	Style Number	VARCHAR (64)	64
currency	The currency supported for the FOB point in ISO4217 format.	VARCHAR (64)	64
fobId	FOB/Warehouse # example (1-7, 12 or 31)	VARCHAR (64)	64
fobPostalCode	The postal code of the FOB point	VARCHAR (64)	64
priceType	Net or List or Customer	VARCHAR (64)	64

PromoStandards getConfigurationAndPricing Service Response

```

<S:Envelope xmlns:S="http://schemas.xmlsoap.org/soap/envelope/">
  <S:Body>
    <ns2:GetConfigurationAndPricingResponse xmlns:ns2=
      "http://www.promostandards.org/WSDL/PricingAndConfiguration/1.0.0/"
      xmlns="http://www.promostandards.org/WSDL/PricingAnd
      Configuration/1.0.0/SharedObjects/">
      <ns2:Configuration>
        <ns2:PartArray>
          <ns2:Part>
            <partId>240831</partId>
            <ns2:PartPriceArray>
              <ns2:PartPrice>
                <ns2:minQuantity>1</ns2:minQuantity>
                <ns2:price>8.99</ns2:price>
                <ns2:priceUom>CA</ns2:priceUom>
                <ns2:priceEffectiveDate>2023-05-19T12:51:32.780
                </ns2:priceEffectiveDate>
                <ns2:priceExpiryDate>2023-05-19T23:59:59.000
                </ns2:priceExpiryDate>
              </ns2:PartPrice>
            </ns2:PartPriceArray>
            <partGroup>1</partGroup>
            <partGroupRequired>>false</partGroupRequired>
            <partGroupDescription>NA</partGroupDescription>
            <ratio>1</ratio>
            <defaultPart>>false</defaultPart>
          </ns2:Part>
        </ns2:PartArray>
        <productId>K500</productId>
        <currency>USD</currency>
        <FobArray>
          <Fob>
            <fobId>6</fobId>
            <fobPostalCode>32219</fobPostalCode>
          </Fob>
        </FobArray>
        <priceType>Net</priceType>
      </ns2:Configuration>
    </ns2:GetConfigurationAndPricingResponse>
  </S:Body>
</S:Envelope>

```

PromoStandards getFobPoints Service

This service returns basic information about FOB points for a given product.

PromoStandards getFobPoints Request Parameters

Field	Description	Example	Type	Max Chars
wsVersion	PromoStandard Version	1.0.0	VARCHAR	64
id	SanMar.com Username	SanMarUsername	VARCHAR	64
password	SanMar.com Password	SanMarPassword	VARCHAR	64
productID	Style Number	K500	VARCHAR	64
partId	Unique Key	240831	VARCHAR	64
currency	Enter only: USD	USD	VARCHAR	64
fobId	FOB/Warehouse #	1-7, 12 or 31	VARCHAR	64
priceType	The requested price type.	NET(cost), List(MSRP) or Customer(special pricing)	VARCHAR	64
localizationCountry	Enter only: US	US	VARCHAR	2
localizationLanguage	Enter only: EN	EN	VARCHAR	2

PromoStandards getFobPoints Service XML Request

```
<soapenv:Envelope xmlns:soapenv="http://schemas.xmlsoap.org/soap/envelope/"
xmlns:ns="http://www.promostandards.org/WSDL/PricingAndConfiguration/1.0.0/"
xmlns:shar="http://www.promostandards.org/WSDL/PricingAndConfiguration/1.0.0/SharedObjects/">
  <soapenv:Header />
  <soapenv:Body>
    <ns:GetFobPointsRequest>
      <shar:wsVersion>1.0.0</shar:wsVersion>
      <shar:id>SanMarUsername</shar:id>
      <shar:password>SanMarPassword</shar:password>
      <shar:productId>k500</shar:productId>
      <shar:localizationCountry>us</shar:localizationCountry>
      <shar:localizationLanguage>en</shar:localizationLanguage>
    </ns:GetFobPointsRequest>
  </soapenv:Body>
</soapenv:Envelope>
```

PromoStandards getFobPoints Service Response Parameters

Field	Description	Type	Max Chars
fobId	FOB/Warehouse # example (1-7, 12 or 31)	VARCHAR	64
fobCity	The city of the FOB Point	VARCHAR	64
fobState	The state of the FOB Point in ISO 3166-2 format.	VARCHAR	64
fobPostalCode	The Postal or Zip Code of the fob Point	VARCHAR	64
fobCountry	The country of the FOB Point in Alpha 2 ISO3166 "CODE" format.	VARCHAR	64
currency	The currency supported for the FOB point in ISO4217 format.	VARCHAR	64
partId	Unique Key example (240831)	VARCHAR	64
productID	Style Number example (K500)	VARCHAR	64

PromoStandards getFobPoints Service XML Response

```

<S:Envelope xmlns:S="http://schemas.xmlsoap.org/soap/envelope/">
  <S:Body>
    <ns2:GetFobPointsResponse xmlns:ns2="http://www.promostandards.org/
WSDL/PricingAndConfiguration/1.0.0/" xmlns="http://www.promostandards.
org/WSDL/PricingAndConfiguration/1.0.0/SharedObjects/">
      <ns2:FobPointArray>
        <ns2:FobPoint>
          <fobId>1</fobId>
          <ns2:fobCity>Seattle</ns2:fobCity>
          <ns2:fobState>WA</ns2:fobState>
          <fobPostalCode>98027</fobPostalCode>
          <ns2:fobCountry>US</ns2:fobCountry>
          <ns2:CurrencySupportedArray>
            <ns2:CurrencySupported>
              <currency>USD</currency>
            </ns2:CurrencySupported>
          </ns2:CurrencySupportedArray>
          <ns2:ProductArray>
            <ns2:Product>
              <productId>k500</productId>
            </ns2:Product>
          </ns2:ProductArray>
        </ns2:FobPoint>
        <ns2:FobPoint>
          <fobId>2</fobId>
          <ns2:fobCity>Cincinnati</ns2:fobCity>
          <ns2:fobState>OH</ns2:fobState>
          <fobPostalCode>45069</fobPostalCode>
          <ns2:fobCountry>US</ns2:fobCountry>
          <ns2:CurrencySupportedArray>
            <ns2:CurrencySupported>
              <currency>USD</currency>
            </ns2:CurrencySupported>
          </ns2:CurrencySupportedArray>
          <ns2:ProductArray>
            <ns2:Product>
              <productId>k500</productId>
            </ns2:Product>
          </ns2:ProductArray>
        </ns2:FobPoint>
      </ns2:FobPointArray>
    </ns2:GetFobPointsResponse>
  </S:Body>
</S:Envelope>

```

PromoStandards - Order Shipment Notification Service V1.0.0

EDEV: <https://edev-ws.sanmar.com:8080/promostandards/OrderShipmentNotificationServiceBinding?wsdl>

PRODUCTION: <https://ws.sanmar.com:8080/promostandards/OrderShipmentNotificationServiceBinding?wsdl>

There is one function available for this web service.

getOrderShipmentNotification

Please Note: EDEV testing for this service requires manual invoicing of your test orders, which may take 24-48 hours to complete. Please e-mail the integration team the PO numbers for the test orders that you have submitted, and we will have your orders shipped/invoiced in our EDEV system.

PromoStandards getOrderShipmentNotification Service

This service returns shipment details for a purchase order based off the query type of the request. Shipment details can be searched by purchase order number, invoice number, or shipment date.

PromoStandards getOrderShipmentNotification Request Parameters

Field	Description	Example	Required	Type	Max Chars
wsVersion	Promostandard Version	1.0.0	Yes	STRING	64
id	SanMar.com Username	SanMarUsername	Yes	STRING	64
password	SanMar.com Password	SanMarPassword	Yes	STRING	64
queryType	1=Purchase Order# 2=SanMar Sale Order# 3= shipmentDateTimeStamp	1	Yes	STRING	
referenceNumber	Purchase order / Sales Order #	179603	No	STRING	64
shipmentDateTimeStamp	UTC format (YYYY-MM-DD)T(HH:MM:SS)	2017-02-13T00:00:00Z	No	DATE	

PromoStandards getOrderShipmentNotification Service XML Requests

queryType 1: Search by Purchase Order Number

You must remove or comment out the <shipmentDateTimeStamp></shipmentDateTimeStamp> field.

```
<soapenv:Envelope xmlns:soapenv="http://schemas.xmlsoap.org/soap/envelope/"
xmlns:ns="http://www.promostandards.org/WSDL/OrderShipmentNotificationService/1.0.0/"x
xmlns:shar="http://www.promostandards.org/WSDL/OrderShipmentNotificationService/1.0.0/S
haredObjects/">
  <soapenv:Header />
  <soapenv:Body>
    <ns:GetOrderShipmentNotificationRequest>
      <shar:wsVersion>1.0.0</shar:wsVersion>
      <shar:id>SanMarUsername</shar:id>
      <shar:password>SanMarPassword</shar:password>
      <ns:queryType>1</ns:queryType>
      <ns:referenceNumber>PO1645</ns:referenceNumber>
    </ns:GetOrderShipmentNotificationRequest>
  </soapenv:Body>
</soapenv:Envelope>
```

queryType 2: Search by SanMar Order Number

You must remove or comment out the `<shipmentDateTimeStamp></shipmentDateTimeStamp>` field.

```
<soapenv:Envelope xmlns:soapenv="http://schemas.xmlsoap.org/soap/envelope/"
xmlns:ns="http://www.promostandards.org/WSDL/OrderShipmentNotificationService/1.0.0/"x
mlns:shar="http://www.promostandards.org/WSDL/OrderShipmentNotificationService/1.0.0/S
haredObjects/">
  <soapenv:Header />
  <soapenv:Body>
    <ns:GetOrderShipmentNotificationRequest>
      <shar:wsVersion>1.0.0</shar:wsVersion>
      <shar:id>SanMarUsername</shar:id>
      <shar:password>SanMarPassword</shar:password>
      <ns:queryType>2</ns:queryType>
      <ns:referenceNumber>71490386</ns:referenceNumber>
    </ns:GetOrderShipmentNotificationRequest>
  </soapenv:Body>
</soapenv:Envelope>
```

queryType 3: Search from shipment DateTimeStamp - 7 Day Search Max

You must remove or comment out the `<referenceNumber></referenceNumber>` field. ShipDate must be in UTC format. The following examples are acceptable formats: 2017-02-13T00:00:00Z, 2017-02-13T00:00:00+00:00, 2017-02-17T00:00:00.000000+00:00

```
<soapenv:Envelope xmlns:soapenv="http://schemas.xmlsoap.org/soap/envelope/"
xmlns:ns="http://www.promostandards.org/WSDL/OrderShipmentNotificationService/1.0.0/"x
mlns:shar="http://www.promostandards.org/WSDL/OrderShipmentNotificationService/1.0.0/S
haredObjects/">
  <soapenv:Header />
  <soapenv:Body>
    <ns:GetOrderShipmentNotificationRequest>
      <shar:wsVersion>1.0.0</shar:wsVersion>
      <shar:id>SanMarUsername</shar:id>
      <shar:password>SanMarPassword</shar:password>
      <ns:queryType>3</ns:queryType>
      <ns:shipmentDateTimeStamp>2017-02-13T00:00:00Z</ns:shipmentDateTimeStamp>
    </ns:GetOrderShipmentNotificationRequest>
  </soapenv:Body>
</soapenv:Envelope>
```


PromoStandards getOrderShipmentNotification Service XML Response

```

<S:Envelope xmlns:S="http://schemas.xmlsoap.org/soap/envelope/">
  <S:Body>
    <ns2:GetOrderShipmentNotificationResponse xmlns:ns2="http://www.
promostandards.org/WSDL/OrderShipmentNotificationService/1.0.0/"xmlns="http://www.
promostandards.org/WSDL/OrderShipmentNotificationService/1.0.0/SharedObjects/">
      <ns2:OrderShipmentNotificationArray>
        <ns2:OrderShipmentNotification>
          <ns2:purchaseOrderNumber>PONUMBER</ns2:purchaseOrderNumber>
          <ns2:complete>>true</ns2:complete>
          <ns2:SalesOrderArray>
            <ns2:SalesOrder>
              <ns2:salesOrderNumber>1112223334</ns2:salesOrderNumber>
              <ns2:complete>>true</ns2:complete>
              <ns2:ShipmentLocationArray>
                <ns2:ShipmentLocation>
                  <ns2:id>1</ns2:id>
                  <ns2:complete>>true</ns2:complete>
                  <ns2:ShipFromAddress>
                    <address1>Test Address</address1>
                    <city>IRVING</city>
                    <region>TX</region>
                    <postalCode>75038</postalCode>
                    <country>US</country>
                  </ns2:ShipFromAddress>
                  <ns2:ShipToAddress>
                    <address1>Test Address</address1>
                    <city>Jacksonville</city>
                    <region>FL</region>
                    <postalCode>32218</postalCode>
                    <country>US</country>
                  </ns2:ShipToAddress>
                  <ns2:shipmentDestinationType>Commercial
</ns2:shipmentDestinationType>
                <ns2:PackageArray>
                  <ns2:Package>
                    <ns2:id>1</ns2:id>
                    <ns2:trackingNumber>TrackingNumber</ns2:trackingNumber>
                    <ns2:shipmentDate>2023-01-12T22:44:42.467-
08:00</ns2:shipmentDate>
                    <ns2:carrier>UPS</ns2:carrier>
                    <ns2:shipmentMethod>Ground</ns2:shipmentMethod>
                    <ns2:ItemArray>
                      <ns2:Item>
                        <ns2:supplierProductId>PC55P</ns2:supplierProductId>
                        <ns2:supplierPartId>834732</ns2:supplierPartId>
                        <ns2:quantity>1</ns2:quantity>
                      </ns2:Item>
                    </ns2:ItemArray>
                  </ns2:Package>
                </ns2:PackageArray>
              </ns2:SalesOrder>
            </ns2:SalesOrderArray>
          </ns2:OrderShipmentNotification>
        </ns2:OrderShipmentNotificationArray>
      </ns2:GetOrderShipmentNotificationResponse>
    </S:Body>
  </S:Envelope>

```

PromoStandards getOrderShipmentNotification Service XML Response

```
        </ns2:ShipmentLocation>
      </ns2:ShipmentLocationArray>
    </ns2:SalesOrder>
  </ns2:SalesOrderArray>
</ns2:OrderShipmentNotification>
</ns2:OrderShipmentNotificationArray>
</ns2:GetOrderShipmentNotificationResponse>
</S:Body>
</S:Envelope>
```

PromoStandards Product Order Status Service V2.0.0

EDEV: <https://edev-ws.sanmar.com:8080/promostandards/OrderStatusServiceBindingV2?wsdl>

PRODUCTION: <https://ws.sanmar.com:8080/promostandards/OrderStatusServiceBindingV2?wsdl>

There are three functions available for this web service.

getIssue **(not supported)**

getOrderStatus

getServiceMethods

Please Note: EDEV testing for this service requires manual invoicing of your test orders, which may take 24-48 hours to complete. Please e-mail the integration team the PO numbers for the test orders that you have submitted, and we will have your orders shipped/invoiced in our EDEV system.

PromoStandards getOrderStatus Service

This service returns the order statuses that SanMar offers based on the query type submitted.

When utilizing the **lastUpdate** query, please limit your query to a max of 30 days. If you receive a timeout, please reduce your query to a max of 7 days. If you continue to experience a timeout, please utilize the **poSearch** or **soSearch** queries.

When calling on backorder, once you have determined an in-hands date with our sales team, please stop calling on that order until after the in-hands date has passed.

PromoStandards getOrderStatus Request Parameters

Field	Description	Example	Required	Type	Max Chars
wsVersion	PromoStandard Version	2.0.0	Yes	VARCHAR	64
id	SanMar.com Username	SanMarUsername	Yes	VARCHAR	64
password	SanMar.com Password	SanMarPassword	Yes	VARCHAR	64
querytype	The type of query you wish to perform. poSearch : Query based on the Customer Provided Purchase Order Number. soSearch : Query based on the Sales Order Number lastUpdate : Query based on all orders with an updated time greater than the value specified in the statusTimeStamp field allOpen : Query based on all Sales Orders that currently have a Status other than Complete or Canceled allOpenIssues : Query based on all open orders that currently have an issue associated with them with an Issue Status of Open or Pending	poSearch	Yes	STRING	64
reference number	Required when any of these queryTypes are specified: poSearch : The purchase order number. soSearch :the sales order number.	12345647	No	String	64

status TimeStamp	Required with queryType lastUpdate. Beginning date time since last status change in UTC. Indicates the change date time for any status change greater than the value provided. UTC format (YYYY-MM-DD)T(HH:MM:SS)	2021-02-13T00:00:00	No	ISO 8601	
Returnissue detailtype	Returns detailed information regarding order issues <ul style="list-style-type: none"> • noIssues (The response does not include issues details.) • openIssues (the response includes issues details for issues with an Issue Status of Open or Pending.) • allIssues (the response includes issues details for all issues.) 	noIssues	Yes	String	
returnProd uctDetail	Returns detailed information regarding the order/ line-item information.	true	Yes	BOOLEAN	

PromoStandards getOrderStatus Service XML Request

queryType 1: Search by Purchase Order Number

```
<soapenv:Envelope xmlns:soapenv="http://schemas.xmlsoap.org/soap/envelope/"
xmlns:ns="http://www.promostandards.org/WSDL/OrderStatus/2.0.0/"
xmlns:shar="http://www.promostandards.org/WSDL/OrderStatus/2.0.0/SharedObjects/">
  <soapenv:Header />
  <soapenv:Body>
    <ns:GetOrderStatusRequest>
      <shar:wsVersion>2.0.0</shar:wsVersion>
      <shar:id>SanMarUsername</shar:id>
      <shar:password>SanMarPassword</shar:password>
      <shar:queryType>poSearch</shar:queryType>
      <shar:referenceNumber>SS3820</shar:referenceNumber>
      <shar:returnIssueDetailType>noIssues</shar:returnIssueDetailType>
      <shar:returnProductDetail>>true</shar:returnProductDetail>
    </ns:GetOrderStatusRequest>
  </soapenv:Body>
</soapenv:Envelope>
```

queryType 2: Search by Sales Order Number

```

<soapenv:Envelope xmlns:soapenv="http://schemas.xmlsoap.org/soap/envelope/"
xmlns:ns="http://www.promostandards.org/WSDL/OrderStatus/2.0.0/"
xmlns:shar="http://www.promostandards.org/WSDL/OrderStatus/2.0.0/SharedObjects/">
  <soapenv:Header />
  <soapenv:Body>
    <ns:GetOrderStatusRequest>
      <shar:wsVersion>2.0.0</shar:wsVersion>
      <shar:id>SanMarUsername</shar:id>
      <shar:password>SanMarPassword</shar:password>
      <shar:queryType>soSearch</shar:queryType>
      <shar:referenceNumber>100342565</shar:referenceNumber>
      <shar:returnIssueDetailType>noIssues</shar:returnIssueDetailType>
      <shar:returnProductDetail>true</shar:returnProductDetail>
    </ns:GetOrderStatusRequest>
  </soapenv:Body>
</soapenv:Envelope>

```

queryType 3: Search from shipment LastUpdate - 30 Day Search Max

If you receive a timeout, please reduce your query to a max of 7 days.

If you continue to experience a timeout, please utilize the poSearch or soSearch queries.

```

<soapenv:Envelope xmlns:soapenv="http://schemas.xmlsoap.org/soap/envelope/"
xmlns:ns="http://www.promostandards.org/WSDL/OrderStatus/2.0.0/"
xmlns:shar="http://www.promostandards.org/WSDL/OrderStatus/2.0.0/SharedObjects/">
  <soapenv:Header />
  <soapenv:Body>
    <ns:GetOrderStatusRequest>
      <shar:wsVersion>2.0.0</shar:wsVersion>
      <shar:id>SanMarUsername</shar:id>
      <shar:password>SanMarPassword</shar:password>
      <shar:queryType>lastUpdate</shar:queryType>
      <shar:statusTimeStamp>2023-10-24T00:00:00</shar:statusTimeStamp>
      <shar:returnIssueDetailType>noIssues</shar:returnIssueDetailType>
      <shar:returnProductDetail>true</shar:returnProductDetail>
    </ns:GetOrderStatusRequest>
  </soapenv:Body>
</soapenv:Envelope>

```

queryType 4: Search from allOpen

```
<soapenv:Envelope xmlns:soapenv="http://schemas.xmlsoap.org/soap/envelope/"
xmlns:ns="http://www.promostandards.org/WSDL/OrderStatus/2.0.0/"
xmlns:shar="http://www.promostandards.org/WSDL/OrderStatus/2.0.0/SharedObjects/">
  <soapenv:Header />
  <soapenv:Body>
    <ns:GetOrderStatusRequest>
      <shar:wsVersion>2.0.0</shar:wsVersion>
      <shar:id>SanMarUsername</shar:id>
      <shar:password>SanMarPassword</shar:password>
      <shar:queryType>allOpen</shar:queryType>
      <shar:returnIssueDetailType>allIssues</shar:returnIssueDetailType>
      <shar:returnProductDetail>true</shar:returnProductDetail>
    </ns:GetOrderStatusRequest>
  </soapenv:Body>
</soapenv:Envelope>
```

queryType 5: Search from allOpenIssues

```
<soapenv:Envelope xmlns:soapenv="http://schemas.xmlsoap.org/soap/envelope/"
xmlns:ns="http://www.promostandards.org/WSDL/OrderStatus/2.0.0/"
xmlns:shar="http://www.promostandards.org/WSDL/OrderStatus/2.0.0/SharedObjects/">
  <soapenv:Header />
  <soapenv:Body>
    <ns:GetOrderStatusRequest>
      <shar:wsVersion>2.0.0</shar:wsVersion>
      <shar:id>SanMarUsername</shar:id>
      <shar:password>SanMarPassword</shar:password>
      <shar:queryType>allOpenIssues</shar:queryType>
      <shar:returnIssueDetailType>allIssues</shar:returnIssueDetailType>
      <shar:returnProductDetail>true</shar:returnProductDetail>
    </ns:GetOrderStatusRequest>
  </soapenv:Body>
</soapenv:Envelope>
```

PromoStandards getOrderStatus Service Response Parameters

The last returned status will be a 'Complete' or 'Canceled' return at the order level. Once this status is returned you may cease calling on that PO. No further updates will be provided.

Field	Description	Type	Max Chars
purchaseOrderNumber	The associated purchase order number from the customer	VARCHAR	64
salesOrderNumber	The associated factory sales order number (This is used in the example of an internal PO splitting at the factory level)	VARCHAR	64
status	<p>Received – Order or line item has been received. This status will show for items on Backorder or OnHold.</p> <p>Confirmed – Order or line item has been received, entered, and accepted.</p> <p>Partially Shipped – Order or line item has shipped in Part; remaining items in production.</p> <p>Shipped – Order or line item has shipped in full.</p> <p>Complete – Order or line item has shipped in full and invoiced, No further updates will be given.</p> <p>Canceled – Order or line item has been canceled, no further updates will be given.</p>	STRING	64
issueCategory	<p>Will show at the header level if one of the following IssueCategories apply, otherwise this field will not populate in the return:</p> <p>generalHold = Order is onHold with SanMar. backOrderHold = item is on Backorder with SanMar.</p>	STRING	64
ContactType	Default Value - Sales	VARCHAR	256
ContactDetailsObject	Will show Account Executive if applicable	OBJECT	
Product Array	An array of Product objects. This field will not be populated if returnProductDetail is false in the XML request.	ARRAY	
Productid	The Style Number for the associated line item	STRING	64
partid	The Unique Key for the associated line Item	STRING	64
salesOrderLineNumber	Line item number	STRING	64
QuantityOrdered	Value and UOM of Quantity ordered	OBJECT	
QuantityShipped	Value and UOM of Quantity Shipped	OBJECT	
status	Status of the line, see the status facet above for acceptable values	VARCHAR	256
Issue Array	An array of Issue Objects. This field will not be populated if Return Issue Details = 'noissues' in the XML request, or if there are no applicable issues.	ARRAY	
issueStatus	Items with an assigned issue category will show as 'open'	String	64
issueCategory	<p>Will show one of the following categories if applicable:</p> <p>generalHold = Order is onHold with SanMar. backOrderHold = item is on Backorder with SanMar.</p>	String	64
urgentresponserequired	Response will always be 'false'	BOOLEAN	
productID	The Style Number for the associated line item	STRING	64
partID	The Unique Key for the associated line Item	STRING	64
validTimestamp	Order status time	ISO 8601	
code	Response code (-0 for successful)	INT	
description	Response message for requestor	STRING	256
Severity	Severity of message	STRING	64

PromoStandards getOrderStatusDetails Service XML Response (Return Product Detail = 'True')

```

<S:Envelope xmlns:S="http://schemas.xmlsoap.org/soap/envelope/">
  <S:Body>
    <ns2:GetOrderStatusResponse xmlns:ns2=
      "http://www.promostandards.org/WSDL/OrderStatus/2.0.0/" xmlns=
      "http://www.promostandards.org/WSDL/OrderStatus/2.0.0/SharedObjects/">
      <OrderStatusArray>
        <OrderStatus>
          <purchaseOrderNumber>SS3820</purchaseOrderNumber>
          <OrderStatusDetailArray>
            <OrderStatusDetail>
              <salesOrderNumber>100267568</salesOrderNumber>
              <status>received</status>
              <issueCategory>generalHold</issueCategory>
              <OrderContactArray>
                <Contact>
                  <contactType>Sales</contactType>
                  <ContactDetails />
                </Contact>
              </OrderContactArray>
              <ProductArray>
                <Product>
                  <productId>PC54</productId>
                  <partId>538612</partId>
                  <salesOrderLineNumber>1</salesOrderLineNumber>
                  <QuantityOrdered>
                    <value>500</value>
                    <uom>EA</uom>
                  </QuantityOrdered>
                  <QuantityShipped>
                    <value>0</value>
                    <uom>EA</uom>
                  </QuantityShipped>
                  <status>received</status>
                </Product>
              </ProductArray>
              <IssueArray>
                <Issue>
                  <issueStatus>Open</issueStatus>
                  <issueCategory>generalHold</issueCategory>
                  <urgentResponseRequired>>false</urgentResponseRequired>
                  <productId>PC54</productId>
                  <partId>538612</partId>
                </Issue>
              </IssueArray>
              <validTimestamp>2023-12-07T16:11:10.497-
                08:00</validTimestamp>
            </OrderStatusDetail>
          </OrderStatusDetailArray>
        </OrderStatus>
      </OrderStatusArray>
    </ns2:GetOrderStatusResponse>
  </S:Body>
</S:Envelope>

```

```
    </OrderStatusArray>
  </ns2:GetOrderStatusResponse>
</S:Body>
</S:Envelope>
```

PromoStandards getOrderStatusDetails Service XML Response (Return Product Detail = 'False')

```
<S:Envelope xmlns:S="http://schemas.xmlsoap.org/soap/envelope/">
  <S:Body>
    <ns2:GetOrderStatusResponse xmlns:ns2="http://www.promostandards.org/
WSDL/OrderStatus/2.0.0/" xmlns="http://www.promostandards.org/WSDL/
OrderStatus/2.0.0/SharedObjects/">
      <OrderStatusArray>
        <OrderStatus>
          <purchaseOrderNumber>SS3820</purchaseOrderNumber>
          <OrderStatusDetailArray>
            <OrderStatusDetail>
              <salesOrderNumber>100267544</salesOrderNumber>
              <status>received</status>
              <issueCategory>generalHold</issueCategory>
              <OrderContactArray>
                <Contact>
                  <contactType>Sales</contactType>
                  <ContactDetails />
                </Contact>
              </OrderContactArray>
              <IssueArray>
                <Issue>
                  <issueStatus>Open</issueStatus>
                  <issueCategory>generalHold</issueCategory>
                  <urgentResponseRequired>>false
</urgentResponseRequired>
                  <productId>PC54</productId>
                  <partId>538612</partId>
                </Issue>
              </IssueArray>
              <validTimestamp>2023-12-08T09:47:53.720-
08:00</validTimestamp>
            </OrderStatusDetail>
          </OrderStatusDetailArray>
        </OrderStatus>
      </OrderStatusArray>
    </ns2:GetOrderStatusResponse>
  </S:Body>
</S:Envelope>
```

PromoStandards getServiceMethods Service

This service returns the Service Methods that SanMar offers for this call.

PromoStandards getServiceMethods Request Parameters

Field	Description	Example	Required	Type	Max Chars
wsVersion	PromoStandard Version	2.0.0	Yes	VARCHAR	64
id	SanMar.com Username	SanMarUsername	Yes	VARCHAR	64
password	SanMar.com Password	SanMarPassword	Yes	VARCHAR	64

PromoStandards getServiceMethods XML Request

```
<soapenv:Envelope xmlns:soapenv="http://schemas.xmlsoap.org/soap/envelope/"
xmlns:ns="http://www.promostandards.org/WSDL/OrderStatus/2.0.0/"
xmlns:shar="http://www.promostandards.org/WSDL/OrderStatus/2.0.0/SharedObjects/">
  <soapenv:Header />
  <soapenv:Body>
    <ns:GetServiceMethodsRequest>
      <shar:wsVersion>2.0.0</shar:wsVersion>
      <shar:id>SanMarUsername</shar:id>
      <shar:password>SanMarPassword</shar:password>
    </ns:GetServiceMethodsRequest>
  </soapenv:Body>
</soapenv:Envelope>
```

PromoStandards getServiceMethods Service Response Parameters

Field	Description	Type	Max Chars
ServiceMethod	Displays the supported Service Method	VARCHAR	64
code	Response code (-0 for successful)	INT	
description	Response message for requestor	STRING	256
Severity	Severity of message	STRING	64

PromoStandards getOrderStatusDetails Service XML Response

```
<S:Envelope xmlns:S="http://schemas.xmlsoap.org/soap/envelope/">
  <S:Body>
    <ns2:GetServiceMethodsResponse xmlns:ns2="http://www.promostandards.org/
WSDL/OrderStatus/2.0.0/" xmlns="http://www.promostandards.org/
WSDL/OrderStatus/2.0.0/SharedObjects/">
      <ServiceMethodArray>
        <serviceMethod>GetOrderStatus</serviceMethod>
      </ServiceMethodArray>
      <ServiceMessageArray>
        <ServiceMessage>
          <code>0</code>
          <description>Information returned successfully.</description>
          <severity>Information</severity>
        </ServiceMessage>
      </ServiceMessageArray>
    </ns2:GetServiceMethodsResponse>
  </S:Body>
</S:Envelope>
```

SanMar Standard Invoicing Services

EDEV: <https://edev-ws.sanmar.com:8080/SanMarWebService/InvoicePort?wsdl>

PRODUCTION: <https://ws.sanmar.com:8080/SanMarWebService/InvoicePort?wsdl>

There are ten functions available for this web service.

GetInvoiceByInvoiceNo
 GetInvoices
 GetInvoicesByInvoiceDateRange
 GetInvoicesByOrderDate
 GetInvoicesByPurchaseOrderNo
 GetInvoicesHeaderByInvoiceDateRange
 GetInvoicesHeaderByOrderDate
 GetInvoicesHeaderByPurchaseOrderNo
 GetUnpaidInvoices
 GetUnpaidInvoicesHeader

Error Messages by Method

GetInvoiceByPurchaseOrderNo

Scenario	Error Message
If a user does not mention a PO number	Invalid request
If a user mentions an invalid PO number	Data not found
If the PO length is greater than 13	Data not found

GetInvoicesByInvoiceNo

Scenario	Error Message
If a user does not mention the invoice number	' is not a valid value for 'integer'
If a user mentions an invalid invoice number	Data not found
If the invoice number length is greater than 10	Value 'xxxxxxxx' is not facet-valid with respect to maxInclusive 'xxxxxxxx' for type 'int'.

GetInvoicesByOrderDate

Scenario	Error Message
If the date is not mentioned	is not a valid value for 'date'
If an invalid date is mentioned	is not a valid value for 'date'
If the date length is greater than 10	'xxxxx-xx-xx' is not a valid value for 'date'
If the date is before 10-02-1900 or after 10-02-2114	Data not found

Error Messages Continued

GetInvoicesByInvoiceDateRange

Scenario	Error Message
If the starting and ending dates are not mentioned	is not a valid value for 'date'
If the starting or ending dates (or combination of both) are invalid	is not a valid value for 'date'
If the date range is greater than 3 months or 1-year	Invalid request

GetUnpaidInvoices

Scenario	Error Message
If there are no unpaid invoices	Data not found

Get Invoices (Incremental)

Scenario	Error Message
If there is no incremental data available	Data not found

SanMar GetInvoicesByInvoiceNo Service

This method submits an invoice number and returns the header and line-item invoice data for a specific invoice number, or an error message if unsuccessful.

SanMar GetInvoicesByInvoiceNo Service Parameters

Field	Description	Required	Type
InvoiceNo	Invoice Number	Yes	INT

SanMar GetInvoicesByInvoiceNo Service XML Request

```
<soapenv:Envelope xmlns:soapenv="http://schemas.xmlsoap.org/soap/envelope/"
xmlns:web="http://webservice.integration.sanmar.com/">
  <soapenv:Header />
  <soapenv:Body>
    <web:GetInvoiceByInvoiceNo>
      <web:CustomerNo>SanMarCustomerNumber</web:CustomerNo>
      <web:UserName>SanMarUsername</web:UserName>
      <web>Password>SanMarPassword</web>Password>
      <web:InvoiceNo>12345678</web:InvoiceNo>
    </web:GetInvoiceByInvoiceNo>
  </soapenv:Body>
</soapenv:Envelope>
```

SanMar GetInvoicesByInvoiceNo Service XML Response

```
<S:Envelope xmlns:S="http://schemas.xmlsoap.org/soap/envelope/">
  <S:Body>
    <Invoice xmlns="http://webservice.integration.sanmar.com/">
      <Header>
        <InvoiceNo>123456789</InvoiceNo>
        <SalesOrderNumber>123456789</SalesOrderNumber>
        <InvoiceDate>2021-02-18</InvoiceDate>
        <InvoiceStatus>Unpaid</InvoiceStatus>
        <CustomerNo>5</CustomerNo>
      <SoldTo>
        <Name>SANMAR EXAMPLE</Name>
        <Address>
          <Address1>123 TEST ROAD</Address1>
          <Address2 />
          <City>ISSAQUAH</City>
          <State>WA</State>
          <PostalCode>98027</PostalCode>
          <Country>US</Country>
        </Address>
      </SoldTo>
    </Invoice>
  </S:Body>
</S:Envelope>
```

```

<ShipTo>
  <Name>SANMAR EXAMPLE</Name>
  <Address>
    <Address1>123 TEST ROAD</Address1>
    <City>Issaquah</City>
    <State>WA</State>
    <PostalCode>98027-8700</PostalCode>
    <Country>US</Country>
  </Address>
</ShipTo>
<RemitTo>
  <Name>SANMAR CORP</Name>
  <Address>
    <Address1>123 TEST ROAD</Address1>
    <City>ISSAQUAH</City>
    <State>WA</State>
    <PostalCode>98027</PostalCode>
    <Country>US</Country>
  </Address>
</RemitTo>
<OrderDate>2021-02-17</OrderDate>
<DueDate>2021-03-20</DueDate>
<ShipVia>NotUsed</ShipVia>
<FOB>NotUsed</FOB>
<Terms>Net30</Terms>
<SubTotal>8.6</SubTotal>
<SalesTax>0.0</SalesTax>
<ShippingHandlingCharges>17.74</ShippingHandlingCharges>
<TotalAmount>26.34</TotalAmount>
<Miscellaneous>
  <FreightSavings>0.0</FreightSavings>
  <TrackingIDs>NotUsed</TrackingIDs>
</Miscellaneous>
</Header>
<LineItem>
  <StyleNo>PC55P</StyleNo>
  <StyleColor>Safety Green</StyleColor>
  <StyleDescription>PC Core Blend Pocket Tee</StyleDescription>
  <StyleSize>S</StyleSize>
  <Quantity>2</Quantity>
  <UnitPrice>6.3</UnitPrice>
  <Amount>12.6</Amount>
  <UniqueKey>709802</UniqueKey>
</LineItem>
</Invoice>
</S:Body>
</S:Envelope>

```


SanMar GetInvoicesByPurchaseOrderNo Service

This method submits a purchase order number and returns the header and line-item level data for the related purchase order.

SanMar GetInvoicesByPurchaseOrderNo Service Parameters

Field	Description	Required	Type
PurchaseOrderNo	Customer Purchase Order Number	Yes	STRING

SanMar GetInvoicesByPurchaseOrderNo Service Service XML Request

```
<soapenv:Envelope xmlns:soapenv="http://schemas.xmlsoap.org/soap/envelope/"
xmlns:web="http://webservice.integration.sanmar.com/">
  <soapenv:Header />
  <soapenv:Body>
    <web:GetInvoiceByInvoiceNo>
      <web:CustomerNo>SanMarCustomerNumber</web:CustomerNo>
      <web:UserName>SanMarUsername</web:UserName>
      <web:Password>SanMarPassword</web:Password>
      <web:InvoiceNo>12345678</web:InvoiceNo>
    </web:GetInvoiceByInvoiceNo>
  </soapenv:Body>
</soapenv:Envelope>
```

SanMar GetInvoicesByPurchaseOrderNo Service Service XML Response

```
<S:Envelope xmlns:S="http://schemas.xmlsoap.org/soap/envelope/">
  <S:Body>
    <Invoices xmlns="http://webservice.integration.sanmar.com/">
      <Invoice>
        <Header>
          <InvoiceNo>12345678</InvoiceNo>
          <SalesOrderNumber>123456789</SalesOrderNumber>
          <InvoiceDate>2014-08-01</InvoiceDate>
          <InvoiceStatus>Unpaid</InvoiceStatus>
          <CustomerNo>5</CustomerNo>
          <SoldTo>
            <Name>SANMAR</Name>
            <Address>
              <Address1>22833 SE Black Nugget Rd</Address1>
              <City>ISSAQUAH</City>
              <State>WA</State>
              <PostalCode>98029</PostalCode>
              <Country>US</Country>
            </Address>
          </SoldTo>
          <ShipTo>
```

```

    <Name>SanMar Corporation Inc</Name>
    <Address>
      <Address1>22833 SE Black Nugget Rd</Address1>
      <City>ISSAQUAH</City>
      <State>WA</State>
      <PostalCode>98029</PostalCode>
      <Country>USA</Country>
    </Address>
  </ShipTo>
  <RemitTo>
    <Name>SANMAR CORP</Name>
    <Address>
      <Address1>PO BOX 34060</Address1>
      <City>SEATTLE</City>
      <State>WA</State>
      <PostalCode>98124-1060</PostalCode>
      <Country>USA</Country>
    </Address>
  </RemitTo>
  <PurchaseOrderNo>4520838A</PurchaseOrderNo>
  <OrderDate>2014-08-01</OrderDate>
  <DueDate>2014-08-31</DueDate>
  <ShipVia>UPS</ShipVia>
  <FOB>SPARKS NV</FOB>
  <Terms>NET 30</Terms>
  <TotalCases>1</TotalCases>
  <TotalWeight>36</TotalWeight>
  <SubTotal>192.72</SubTotal>
  <SalesTax>0.0</SalesTax>
  <ShippingHandlingCharges>0.0</ShippingHandlingCharges>
  <TotalAmount>192.72</TotalAmount>
  <Miscellaneous>
    <FreightSavings>0.0</FreightSavings>
    <TrackingIDs>NotUsed</TrackingIDs>
  </Miscellaneous>
</Header>
<LineItem>
  <StyleNo>2000</StyleNo>
  <StyleColor>Red</StyleColor>
  <StyleDescription>100% ULTRA CTN T RED</StyleDescription>
  <StyleSize>M</StyleSize>
  <Quantity>16</Quantity>
  <UnitPrice>1.84</UnitPrice>
  <Amount>29.44</Amount>
  <UniqueKey>263633</UniqueKey>
</LineItem>
<LineItem>
  <StyleNo>2000</StyleNo>
  <StyleColor>Red</StyleColor>
  <StyleDescription>100% ULTRA CTN T RED</StyleDescription>
  <StyleSize>L</StyleSize>
  <Quantity>14</Quantity>
  <UnitPrice>1.84</UnitPrice>
  <Amount>25.76</Amount>
  <UniqueKey>263634</UniqueKey>
</LineItem>
<LineItem>

```

```
<StyleNo>2000</StyleNo>
<StyleColor>Red</StyleColor>
<StyleDescription>100% ULTRA CTN T RED</StyleDescription>
<StyleSize>3XL</StyleSize>
<Quantity>8</Quantity>
<UnitPrice>4.48</UnitPrice>
<Amount>35.84</Amount>
<UniqueKey>263652</UniqueKey>
</LineItem>
</Invoice>
</Invoices>
</S:Body>
</S:Envelope>
```

SanMar GetInvoicesByInvoiceDateRange Service

This method submits an invoice date range and returns header and line-item data for the date range submitted. The starting and ending date range can be no more than 3-months.

SanMar GetInvoicesByInvoiceDateRange Service Parameters

Field	Description	Required	Type
StartDate	yyyy-mm-dd	Yes	STRING
EndDate	yyyy-mm-dd	Yes	STRING

SanMar GetInvoicesByInvoiceDateRange Service XML Request

```
<soapenv:Envelope xmlns:soapenv="http://schemas.xmlsoap.org/soap/envelope/"
xmlns:web="http://webservice.integration.sanmar.com/">
  <soapenv:Header />
  <soapenv:Body>
    <web:GetInvoicesByInvoiceDateRange>
      <web:CustomerNo>SanMarCustomerNumber</web:CustomerNo>
      <web:UserName>SanMarUsername</web:UserName>
      <web>Password>SanMarPassword</web>Password>
      <web:StartDate>2014-08-01</web:StartDate>
      <web:EndDate>2014-08-01</web:EndDate>
    </web:GetInvoicesByInvoiceDateRange>
  </soapenv:Body>
</soapenv:Envelope>
```

SanMar GetInvoicesByInvoiceDateRange Service XML Response

```
<S:Envelope xmlns:S="http://schemas.xmlsoap.org/soap/envelope/">
  <S:Body>
    <Invoices xmlns="http://webservice.integration.sanmar.com/">
      <Invoice>
        <Header>
          <InvoiceNo>12345678</InvoiceNo>
          <InvoiceDate>2014-08-01</InvoiceDate>
          <InvoiceStatus>Unpaid</InvoiceStatus>
          <CustomerNo>5</CustomerNo>
          <SoldTo>
            <Name>SANMAR</Name>
            <Address>
              <Address1>22833 SE Black Nugget Rd</Address1>
              <City>ISSAQUAH</City>
              <State>WA</State>
              <PostalCode>98029</PostalCode>
              <Country>USA</Country>
            </Address>
          </SoldTo>
        </Header>
      </Invoice>
    </Invoices>
  </S:Body>
</S:Envelope>
```

```

<ShipTo>
  <Name>SanMar Corporation Inc.</Name>
  <Address>
    <Address1>22834 SE Black Nugget Rd</Address1>
    <Address2>STE 001</Address2>
    <City>Issaquah</City>
    <State>WA</State>
    <PostalCode>98029</PostalCode>
    <Country>USA</Country>
  </Address>
</ShipTo>
<RemitTo>
  <Name>SANMAR CORP</Name>
  <Address>
    <Address1>PO BOX 34060</Address1>
    <City>SEATTLE</City>
    <State>WA</State>
    <PostalCode>98124-1060</PostalCode>
    <Country>USA</Country>
  </Address>
</RemitTo>
<PurchaseOrderNo>4530714A</PurchaseOrderNo>
<OrderDate>2014-08-01</OrderDate>
<DueDate>2014-08-31</DueDate>
<ShipVia>UPS</ShipVia>
<FOB>SPARKS NV</FOB>
<Terms>NET 30</Terms>
<TotalCases>1</TotalCases>
<TotalWeight>1</TotalWeight>
<SubTotal>1.4</SubTotal>
<SalesTax>0.0</SalesTax>
<ShippingHandlingCharges>0.0</ShippingHandlingCharges>
<TotalAmount>1.4</TotalAmount>
<Miscellaneous>
  <FreightSavings>0.0</FreightSavings>
  <TrackingIDs>NotUsed</TrackingIDs>
</Miscellaneous>
</Header>
<LineItem>
  <StyleNo>2000</StyleNo>
  <StyleColor>White</StyleColor>
  <StyleDescription>100% ULTRA CTN T WHITE</StyleDescription>
  <StyleSize>M</StyleSize>
  <Quantity>1</Quantity>
  <UnitPrice>1.4</UnitPrice>
  <Amount>1.4</Amount>
  <UniqueKey>263633</UniqueKey>
</LineItem>
</Invoice>

```

```
</Invoices>  
</S:Body>  
</S:Envelope>
```

SanMar GetInvoicesByOrderDate Service

This method submits an order date and returns invoices with header and line-item information.

SanMar GetInvoicesByOrderDate Service Parameters

Field	Description	Required	Type
Date	yyyy-mm-dd	Yes	STRING

SanMar GetInvoicesByOrderDate Service XML Request

```
<soapenv:Envelope xmlns:soapenv="http://schemas.xmlsoap.org/soap/envelope/"
xmlns:web="http://webservice.integration.sanmar.com/">
  <soapenv:Header />
  <soapenv:Body>
    <web:GetInvoicesByOrderDate>
      <web:CustomerNo>SanMarCustomerNumber</web:CustomerNo>
      <web:UserName>SanMarUsername</web:UserName>
      <web>Password>SanMarPassword</web>Password>
      <web>Date>2014-08-01</web>Date>
    </web:GetInvoicesByOrderDate>
  </soapenv:Body>
</soapenv:Envelope>
```

SanMar GetInvoicesByOrderDate Service XML Response

```
<S:Envelope xmlns:S="http://schemas.xmlsoap.org/soap/envelope/">
  <S:Body>
    <Invoices xmlns="http://webservice.integration.sanmar.com/">
      <Invoice>
        <Header>
          <InvoiceNo>12345678</InvoiceNo>
          <InvoiceDate>2014-08-01</InvoiceDate>
          <InvoiceStatus>Unpaid</InvoiceStatus>
          <CustomerNo>5</CustomerNo>
        </Header>
        <SoldTo>
          <Name>SANMAR</Name>
          <Address>
            <Address1>22833 SE Black Nugget Rd</Address1>
            <City>ISSAQUAH</City>
            <State>WA</State>
            <PostalCode>98029</PostalCode>
            <Country>USA</Country>
          </Address>
        </SoldTo>
        <ShipTo>
          <Name>SanMar Corporation Inc.</Name>
          <Address>
            <Address1>22834 SE Black Nugget Rd</Address1>
```

```

        <Address2>STE 001</Address2>
        <City>Issaquah</City>
        <State>WA</State>
        <PostalCode>98029</PostalCode>
        <Country>USA</Country>
    </Address>
</ShipTo>
<RemitTo>
    <Name>SANMAR CORP</Name>
    <Address>
        <Address1>PO BOX 34060</Address1>
        <City>SEATTLE</City>
        <State>WA</State>
        <PostalCode>98124-1060</PostalCode>
        <Country>USA</Country>
    </Address>
</RemitTo>
<PurchaseOrderNo>4527160A</PurchaseOrderNo>
<OrderDate>2014-08-01</OrderDate>
<DueDate>2014-08-31</DueDate>
<ShipVia>UPSN</ShipVia>
<FOB>IRVING TX</FOB>
<Terms>NET 30</Terms>
<TotalCases>1</TotalCases>
<TotalWeight>15</TotalWeight>
<SubTotal>13.2</SubTotal>
<SalesTax>0.0</SalesTax>
<ShippingHandlingCharges>0.0</ShippingHandlingCharges>
<TotalAmount>13.2</TotalAmount>
<Miscellaneous>
    <FreightSavings>0.0</FreightSavings>
    <TrackingIDs>NotUsed</TrackingIDs>
</Miscellaneous>
</Header>
<LineItem>
    <StyleNo>5250</StyleNo>
    <StyleColor>Gold</StyleColor>
    <StyleDescription>TAGLESS 100% CTN TEE GOLD</StyleDescription>
    <StyleSize>S</StyleSize>
    <Quantity>8</Quantity>
    <UnitPrice>1.65</UnitPrice>
    <Amount>13.2</Amount>
    <UniqueKey>405532</UniqueKey>
</LineItem>
</Invoice>
</Invoices>
</S:Body>
</S:Envelope>

```


SanMar GetInvoicesHeaderByInvoiceDateRange Service

This method submits an invoice header date range and returns header information for the submitted date range. The date range can be no more than 1-year from the day submitted.

SanMar GetInvoicesHeaderByInvoiceDateRange Service Parameters

Field	Description	Required	Type
StartDate	yyyy-mm-dd	Yes	STRING
EndDate	yyyy-mm-dd	Yes	STRING

SanMar GetInvoicesHeaderByInvoiceDateRange Service XML Request

```
<soapenv:Envelope xmlns:soapenv="http://schemas.xmlsoap.org/soap/envelope/"
xmlns:web="http://webservice.integration.sanmar.com/">
  <soapenv:Header />
  <soapenv:Body>
    <web:GetInvoicesByInvoiceDateRange>
      <web:CustomerNo>SanMarCustomerNumber</web:CustomerNo>
      <web:UserName>SanMarUsername</web:UserName>
      <web>Password>SanMarPassword</web>Password>
      <web:StartDate>2022-01-22</web:StartDate>
      <web:EndDate>2022-02-04</web:EndDate>
    </web:GetInvoicesByInvoiceDateRange>
  </soapenv:Body>
</soapenv:Envelope>
```

SanMar GetInvoicesHeaderByInvoiceDateRange Service Response

```
<S:Envelope xmlns:S="http://schemas.xmlsoap.org/soap/envelope/">
  <S:Body>
    <Invoices xmlns="http://webservice.integration.sanmar.com/">
      <Invoice>
        <Header>
          <InvoiceNo>12345678</InvoiceNo>
          <InvoiceDate>2022-01-24</InvoiceDate>
          <InvoiceStatus>Unpaid</InvoiceStatus>
          <CustomerNo>5</CustomerNo>
          <SoldTo>
            <Name>SanMar</Name>
            <Address>
              <Address1>2910 DISTRICT AVE</Address1>
              <City>FAIRFAX</City>
              <State>VA</State>
              <PostalCode>22031</PostalCode>
              <Country>USA</Country>
            </Address>
          </SoldTo>
          <ShipTo>
            <Name>SANMAR</Name>
            <Address>
              <Address1>22833 SE Black Nugget Rd</Address1>
```

```

        <Address2>STE 20</Address2>
        <City>ISSAQUAH</City>
        <State>WA</State>
        <PostalCode>98029</PostalCode>
        <Country>USA</Country>
    </Address>
</ShipTo>
<RemitTo>
    <Name>SanMar Corporation Inc.</Name>
    <Address>
        <Address1>22834 SE Black Nugget Rd</Address1>
        <City>Issaquah</City>
        <State>WA</State>
        <PostalCode>98029</PostalCode>
        <Country>USA</Country>
    </Address>
</RemitTo>
<PurchaseOrderNo>123456</PurchaseOrderNo>
<OrderDate>2022-01-23</OrderDate>
<DueDate>2022-01-24</DueDate>
<ShipVia>UPS</ShipVia>
<FOB>SPARKS NV</FOB>
<Terms>NET 30</Terms>
<TotalCases>1</TotalCases>
<TotalWeight>1</TotalWeight>
<SubTotal>4.58</SubTotal>
<SalesTax>0.0</SalesTax>
<ShippingHandlingCharges>0.0</ShippingHandlingCharges>
<TotalAmount>4.58</TotalAmount>
<Miscellaneous>
    <FreightSavings>0.0</FreightSavings>
    <TrackingIDs>NotUsed</TrackingIDs>
</Miscellaneous>
</Header>
<LineItem>
    <StyleNo>PC61</StyleNo>
    <StyleColor>White</StyleColor>
    <StyleDescription>PC61 100% T WHITE</StyleDescription>
    <StyleSize>5XL</StyleSize>
    <Quantity>1</Quantity>
    <UnitPrice>4.58</UnitPrice>
    <Amount>4.58</Amount>
    <UniqueKey>203314</UniqueKey>
</LineItem>
</Invoice>
</Invoices>
</S:Body>
</S:Envelope>

```

SanMar GetUnpaidInvoices Service

This method submits authentication credentials for an account and returns header and line-item information for all unpaid invoices.

SanMar GetUnpaidInvoices Service Parameters

Field	Description	Required	Type
InvoiceNo	Invoice Number	Yes	INT

SanMar GetUnpaidInvoices Service XML Request

```
<soapenv:Envelope xmlns:soapenv="http://schemas.xmlsoap.org/soap/envelope/"
xmlns:web="http://webservice.integration.sanmar.com/">
  <soapenv:Header />
  <soapenv:Body>
    <web:GetUnpaidInvoices>
      <web:CustomerNo>SanMarCustomerNumber</web:CustomerNo>
      <web:UserName>SanMarUsername</web:UserName>
      <web>Password>SanMarPassword</web>Password>
    </web:GetUnpaidInvoices>
  </soapenv:Body>
</soapenv:Envelope>
```

SanMar GetUnpaidInvoices Service XML Response

```
<S:Envelope xmlns:S="http://schemas.xmlsoap.org/soap/envelope/">
  <S:Body>
    <Invoices xmlns="http://webservice.integration.sanmar.com/">
      <Invoice>
        <Header>
          <InvoiceNo>12345678</InvoiceNo>
          <InvoiceDate>2014-08-01</InvoiceDate>
          <InvoiceStatus>Unpaid</InvoiceStatus>
          <CustomerNo>5</CustomerNo>
          <SoldTo>
            <Name>SanMar</Name>
            <Address>
              <Address1>2910 DISTRICT AVE</Address1>
              <City>FAIRFAX</City>
              <State>VA</State>
              <PostalCode>22031</PostalCode>
              <Country>USA</Country>
            </Address>
          </SoldTo>
          <ShipTo>
            <Name>SANMAR</Name>
            <Address>
              <Address1>22833 SE Black Nugget Rd</Address1>
              <Address2>STE 20</Address2>
              <City>ISSAQUAH</City>
```

```

        <State>WA</State>
        <PostalCode>98029</PostalCode>
        <Country>USA</Country>
    </Address>
</ShipTo>
<RemitTo>
    <Name>SanMar Corporation Inc.</Name>
    <Address>
        <Address1>22834 SE Black Nugget Rd</Address1>
        <City>Issaquah</City>
        <State>WA</State>
        <PostalCode>98029</PostalCode>
        <Country>USA</Country>
    </Address>
</RemitTo>
<PurchaseOrderNo>123456</PurchaseOrderNo>
<OrderDate>2004-06-11</OrderDate>
<DueDate>2004-07-11</DueDate>
<ShipVia>UPS</ShipVia>
<FOB>SPARKS NV</FOB>
<Terms>NET 30</Terms>
<TotalCases>1</TotalCases>
<TotalWeight>1</TotalWeight>
<SubTotal>4.58</SubTotal>
<SalesTax>0.0</SalesTax>
<ShippingHandlingCharges>0.0</ShippingHandlingCharges>
<TotalAmount>4.58</TotalAmount>
<Miscellaneous>
    <FreightSavings>0.0</FreightSavings>
    <TrackingIDs>NotUsed</TrackingIDs>
</Miscellaneous>
</Header>
<LineItem>
    <StyleNo>PC61</StyleNo>
    <StyleColor>White</StyleColor>
    <StyleDescription>PC61 100% T WHITE</StyleDescription>
    <StyleSize>5XL</StyleSize>
    <Quantity>1</Quantity>
    <UnitPrice>4.58</UnitPrice>
    <Amount>4.58</Amount>
    <UniqueKey>203314</UniqueKey>
</LineItem>
</Invoice>
</Invoices>
</S:Body>
</S:Envelope>

```

SanMar GetInvoicesHeaderByOrderDate Service

This method submits the Invoice Header By order date and returns header information for a specific order date.

SanMar GetInvoicesHeaderByOrderDate Service Parameters

Field	Description	Required	Type
Date	yyyy-mm-dd	Yes	STRING

SanMar GetInvoicesHeaderByOrderDate Service XML Request

```
<soapenv:Envelope xmlns:soapenv="http://schemas.xmlsoap.org/soap/envelope/"
xmlns:web="http://webservice.integration.sanmar.com/">
  <soapenv:Header />
  <soapenv:Body>
    <web:GetInvoicesHeaderByOrderDate>
      <web:CustomerNo>SanMarCustomerNumber</web:CustomerNo>
      <web:UserName>SanMarUsername</web:UserName>
      <web:Password>SanMarPassword</web:Password>
      <web:Date>2014-08-01</web:Date>
    </web:GetInvoicesHeaderByOrderDate>
  </soapenv:Body>
</soapenv:Envelope>
```

SanMar GetInvoicesHeaderByOrderDate Service XML Response

```
<S:Envelope xmlns:S="http://schemas.xmlsoap.org/soap/envelope/">
  <S:Body>
    <InvoicesHeader xmlns="http://webservice.integration.sanmar.com/">
      <InvoiceHeader>
        <InvoiceNo>12345678</InvoiceNo>
        <InvoiceDate>2014-08-01</InvoiceDate>
        <InvoiceStatus>Unpaid</InvoiceStatus>
        <CustomerNo>5</CustomerNo>
        <SoldTo>
          <Name>SANMAR</Name>
          <Address>
            <Address1>22833 SE Black Nugget Rd</Address1>
            <City>ISSAQUAH</City>
            <State>WA</State>
            <PostalCode>98029</PostalCode>
            <Country>USA</Country>
          </Address>
        </SoldTo>
        <ShipTo>
          <Name>SanMar Corporation Inc.</Name>
          <Address>
            <Address1>22834 SE Black Nugget Rd</Address1>
            <Address2>ST 001</Address2>
            <City>Issaquah</City>
            <State>WA</State>
          </Address>
        </ShipTo>
      </InvoiceHeader>
    </InvoicesHeader>
  </S:Body>
</S:Envelope>
```

```
        <PostalCode>98029</PostalCode>
        <Country>USA</Country>
    </Address>
</ShipTo>
<PurchaseOrderNo>4520838A</PurchaseOrderNo>
<OrderDate>2014-08-01</OrderDate>
<DueDate>2014-08-31</DueDate>
<ShipVia />
<FOB>SPARKS NV</FOB>
<Terms>NET 30</Terms>
<TotalCases>1</TotalCases>
<TotalWeight>15</TotalWeight>
<SubTotal>51.15</SubTotal>
<SalesTax>0.0</SalesTax>
<ShippingHandlingCharges>0.0</ShippingHandlingCharges>
<TotalAmount>51.15</TotalAmount>
<Miscellaneous>
    <FreightSavings>0.0</FreightSavings>
    <TrackingIDs>NotUsed</TrackingIDs>
</Miscellaneous>
</InvoiceHeader>
</InvoicesHeader>
</S:Body>
</S:Envelope>
```

SanMar GetInvoicesHeaderByPurchaseOrderNo Service

This method submits a purchase order number and returns invoice header information. Each PO number must be requested individually.

SanMar GetInvoicesHeaderByPurchaseOrderNo Service Parameters

Field	Description	Required	Type
PurchaseOrderNo	Customer PO Number	Yes	STRING

SanMar GetInvoicesHeaderByPurchaseOrderNo Service XML Request

```
<soapenv:Envelope xmlns:soapenv="http://schemas.xmlsoap.org/soap/envelope/"
xmlns:web="http://webservice.integration.sanmar.com/">
  <soapenv:Header />
  <soapenv:Body>
    <web:GetInvoicesHeaderByPurchaseOrderNo>
      <web:CustomerNo>SanMarCustomerNumber</web:CustomerNo>
      <web:UserName>SanMarUsername</web:UserName>
      <web>Password>SanMarPassword</web>Password>
      <web:PurchaseOrderNo>4520838a</web:PurchaseOrderNo>
    </web:GetInvoicesHeaderByPurchaseOrderNo>
  </soapenv:Body>
</soapenv:Envelope>
```

SanMar GetInvoicesHeaderByPurchaseOrderNo Service XML Response

```
<S:Envelope xmlns:S="http://schemas.xmlsoap.org/soap/envelope/">
  <S:Body>
    <InvoicesHeader xmlns="http://webservice.integration.sanmar.com/">
      <InvoiceHeader>
        <InvoiceNo>12345678</InvoiceNo>
        <InvoiceDate>2014-08-01</InvoiceDate>
        <InvoiceStatus>Unpaid</InvoiceStatus>
        <CustomerNo>5</CustomerNo>
        <SoldTo>
          <Name>SANMAR</Name>
          <Address>
            <Address1>22833 SE Black Nugget Rd</Address1>
            <City>Issaquah</City>
            <State>WA</State>
            <PostalCode>98029</PostalCode>
            <Country>USA</Country>
          </Address>
        </SoldTo>
        <ShipTo>
          <Name>SanMar Corporation Inc.</Name>
```

```
<Address>
  <Address1>22834 SE Black Nugget Rd</Address1>
  <Address2>ST 001</Address2>
  <City>Issaquah</City>
  <State>WA</State>
  <PostalCode>98029</PostalCode>
  <Country>USA</Country>
</Address>
</ShipTo>
<PurchaseOrderNo>4520838A</PurchaseOrderNo>
<OrderDate>2014-08-01</OrderDate>
<DueDate>2014-08-31</DueDate>
<ShipVia />
<FOB>SPARKS NV</FOB>
<Terms>NET 30</Terms>
<TotalCases>1</TotalCases>
<TotalWeight>36</TotalWeight>
<SubTotal>192.72</SubTotal>
<SalesTax>0.0</SalesTax>
<ShippingHandlingCharges>0.0</ShippingHandlingCharges>
<TotalAmount>192.72</TotalAmount>
<Miscellaneous>
  <FreightSavings>0.0</FreightSavings>
  <TrackingIDs>NotUsed</TrackingIDs>
</Miscellaneous>
</InvoiceHeader>
</InvoicesHeader>
</S:Body>
</S:Envelope>
```


SanMar GetUnpaidInvoicesHeader Service

This method submits authentication credentials for an account and returns header information for all unpaid invoices.

SanMar GetUnpaidInvoicesHeader Service Parameters

Field	Description	Required	Type
custNo	SanMar Customer Number	Yes	INT
userName	SanMar Web Username	Yes	STRING
password	SanMar Web User Password	Yes	STRING

SanMar GetUnpaidInvoicesHeader Service XML Request

```
<soapenv:Envelope xmlns:soapenv="http://schemas.xmlsoap.org/soap/envelope/"
xmlns:web="http://webservice.integration.sanmar.com/">
  <soapenv:Header />
  <soapenv:Body>
    <web:GetUnpaidInvoicesHeader>
      <web:CustomerNo>SanMarCustomerNumber</web:CustomerNo>
      <web:UserName>SanMarUsername</web:UserName>
      <web>Password>SanMarPassword</web>Password>
    </web:GetUnpaidInvoicesHeader>
  </soapenv:Body>
</soapenv:Envelope>
```

SanMar GetUnpaidInvoicesHeader Service XML Response

```
<S:Envelope xmlns:S="http://schemas.xmlsoap.org/soap/envelope/">
  <S:Body>
    <InvoicesHeader xmlns="http://webservice.integration.sanmar.com/">
      <InvoiceHeader>
        <InvoiceNo>12345678</InvoiceNo>
        <InvoiceDate>2004-06-11</InvoiceDate>
        <InvoiceStatus>Unpaid</InvoiceStatus>
        <CustomerNo>5</CustomerNo>
        <SoldTo>
          <Name>SANMAR</Name>
          <Address>
            <Address1>22833 SE Black Nugget Rd</Address1>
            <City>ISSAQUAH</City>
            <State>WA</State>
            <PostalCode>98029</PostalCode>
            <Country>USA</Country>
          </Address>
        </SoldTo>
        <ShipTo>
          <Name>SanMar Corporation Inc.</Name>
          <Address>
```

```
        <Address1>22834 SE Black Nugget Rd</Address1>
        <Address2>STE 001</Address2>
        <City>Issaquah</City>
        <State>WA</State>
        <PostalCode>98029</PostalCode>
        <Country>USA</Country>
    </Address>
</ShipTo>
<PurchaseOrderNo>118489</PurchaseOrderNo>
<OrderDate>2004-06-11</OrderDate>
<DueDate>2004-07-11</DueDate>
<ShipVia>UPS</ShipVia>
<FOB>SPARKS NV</FOB>
<Terms>NET 30</Terms>
<TotalCases>1</TotalCases>
<TotalWeight>1</TotalWeight>
<SubTotal>4.58</SubTotal>
<SalesTax>0.0</SalesTax>
<ShippingHandlingCharges>0.0</ShippingHandlingCharges>
<TotalAmount>4.58</TotalAmount>
<Miscellaneous>
    <FreightSavings>0.0</FreightSavings>
    <TrackingIDs>NotUsed</TrackingIDs>
</Miscellaneous>
</InvoiceHeader>
</InvoicesHeader>
</S:Body>
</S:Envelope>
```

SanMar GetInvoices Service

This method retrieves all invoice headers and line-item data for the last three months the first time the service is called. The next time the call is made, the invoice data returned will be the difference between the previous call and the new call. SanMar recommends this method for customers who are processing invoices frequently.

SanMar GetInvoices Service Parameters

Field	Description	Required	Type
custNo	SanMar Customer Number	Yes	INT
userName	SanMar Web Username	Yes	STRING
password	SanMar Web User Password	Yes	STRING

SanMar GetInvoices Service XML Request

```
<<soapenv:Envelope xmlns:soapenv="http://schemas.xmlsoap.org/soap/envelope/"
xmlns:web="http://webservice.integration.sanmar.com/">
  <soapenv:Header />
  <soapenv:Body>
    <web:GetInvoices>
      <web:CustomerNo>SanMarCustomerNumber</web:CustomerNo>
      <web:UserName>SanMarUsername</web:UserName>
      <web>Password>SanMarPassword</web>Password>
    </web:GetInvoices>
  </soapenv:Body>
</soapenv:Envelope>
```

SanMar GetInvoices Service XML Response

```
<S:Envelope xmlns:S="http://schemas.xmlsoap.org/soap/envelope/">
  <S:Body>
    <Invoices xmlns="http://webservice.integration.sanmar.com/">
      <Invoice>
        <Header>
          <InvoiceNo>12345678</InvoiceNo>
          <InvoiceDate>2014-09-05</InvoiceDate>
          <InvoiceStatus>Unpaid</InvoiceStatus>
          <CustomerNo>5</CustomerNo>
          <SoldTo>
            <Name>SANMAR</Name>
            <Address>
              <Address1>22833 SE Black Nugget Rd</Address1>
              <City>ISSAQUAH</City>
              <State>WA</State>
              <PostalCode>98029</PostalCode>
              <Country>USA</Country>
            </Address>
          </SoldTo>
          <ShipTo>
```

```
<Name>SanMar Corporation Inc.</Name>
<Address>
  <Address1>22834 SE Black Nugget Rd</Address1>
  <City>Issaquah</City>
  <State>WA</State>
  <PostalCode>98029</PostalCode>
  <Country>USA</Country>
</Address>
</ShipTo>
<RemitTo>
  <Name>SANMAR CORP</Name>
  <Address>
    <Address1>PO BOX 643693</Address1>
    <City>CINCINNATI</City>
    <State>OH</State>
    <PostalCode>45264-3693</PostalCode>
    <Country>USA</Country>
  </Address>
</RemitTo>
<PurchaseOrderNo>4663454A</PurchaseOrderNo>
<OrderDate>2014-09-04</OrderDate>
<DueDate>2014-10-05</DueDate>
<ShipVia>UPSB</ShipVia>
<FOB>ROBBINSVILLE NJ</FOB>
<Terms>NET 30</Terms>
<TotalCases>1</TotalCases>
<TotalWeight>3</TotalWeight>
<SubTotal>1.98</SubTotal>
<SalesTax>0.0</SalesTax>
<ShippingHandlingCharges>0.0</ShippingHandlingCharges>
<TotalAmount>1.98</TotalAmount>
<Miscellaneous>
  <FreightSavings>0.0</FreightSavings>
  <TrackingIDs>NotUsed</TrackingIDs>
</Miscellaneous>
</Header>
<LineItem>
  <StyleNo>2000</StyleNo>
  <StyleColor>Cardinal Red</StyleColor>
  <StyleDescription>100% ULTRA CTN T CARDINAL RED</StyleDescription>
  <StyleSize>M</StyleSize>
  <Quantity>1</Quantity>
  <UnitPrice>1.98</UnitPrice>
  <Amount>1.98</Amount>
  <uniqueKey>262863</uniqueKey>
</LineItem>
</Invoice>
</Invoices>
</S:Body>
</S:Envelope>
```

PromoStandards Invoice Services V1.0.0

EDEV: https://edev-ws.sanmar.com:8080/promostandards/InvoiceServiceBindingV1_0_0?WSDL

PRODUCTION: https://ws.sanmar.com:8080/promostandards/InvoiceServiceBindingV1_0_0?WSDL

There is one function available for this web service. **Please Note:** *SanMar does not currently support `getVoidedInvoices`.*

`getInvoices`

PromoStandards getInvoices v1.0.0 Service

This service returns SanMar invoices based on the purchase order number, invoice number, invoice date, or requested date. There are four query types for this service.

PromoStandards getInvoices v1.0.0 Request Parameters

Field	Description	Example	Required	Type	Max Chars
queryType	The requested query type for the submission. Query types are numbered 1 through 4. 1 = PO number 2 = Invoice number 3 = date of the invoice 4 = date/time	1	Yes	VARCHAR	64
referenceNumber	The purchase order or invoice number when using query type 1 or 2.	110920	No	VARCHAR	64
requestedDate	Date requested for query type 3. Must be in YYYY-MM-DD format.	2020-11-09	No	DATE	
availableTimeStamp	UTC format (YYYY-MM-DD)T(HH:MM:SS)	2017-02-13T00:00:00	No	TIMESTAMP	

PromoStandards getInvoices v1.0.0 Service XML Request Queries

queryType 1: Search Invoices by Purchase Order Number:

```
<soapenv:Envelope xmlns:soapenv="http://schemas.xmlsoap.org/soap/envelope/"
xmlns:ns="http://www.promostandards.org/WSDL/Invoice/1.0.0/"
xmlns:shar="http://www.promostandards.org/WSDL/Invoice/1.0.0/SharedObjects/">
  <soapenv:Header/>
  <soapenv:Body>
    <ns:GetInvoicesRequest>
      <shar:wsVersion>1.0.0</shar:wsVersion>
      <shar:id>SanMarUsername</shar:id>
      <shar:password>SanMarPassword</shar:password>
      <shar:queryType>1</shar:queryType>
      <shar:referenceNumber>110920</shar:referenceNumber>
    </ns:GetInvoicesRequest>
  </soapenv:Body>
</soapenv:Envelope>
```

queryType 2: Search Invoices by Invoice Number:

```
<soapenv:Envelope xmlns:soapenv="http://schemas.xmlsoap.org/soap/envelope/"
xmlns:ns="http://www.promostandards.org/WSDL/Invoice/1.0.0/"
xmlns:shar="http://www.promostandards.org/WSDL/Invoice/1.0.0/SharedObjects/">
  <soapenv:Header/>
  <soapenv:Body>
    <ns:GetInvoicesRequest>
      <shar:wsVersion>1.0.0</shar:wsVersion>
      <shar:id>SanMarUsername</shar:id>
      <shar:password>SanMarPassword</shar:password>
      <shar:queryType>2</shar:queryType>
      <shar:referenceNumber>103036257</shar:referenceNumber>
    </ns:GetInvoicesRequest>
  </soapenv:Body>
</soapenv:Envelope>
```

queryType 3: Search Invoices by Invoice Date:

```
<soapenv:Envelope xmlns:soapenv="http://schemas.xmlsoap.org/soap/envelope/"
xmlns:ns="http://www.promostandards.org/WSDL/Invoice/1.0.0/"
xmlns:shar="http://www.promostandards.org/WSDL/Invoice/1.0.0/SharedObjects/">
  <soapenv:Header/>
  <soapenv:Body>
    <ns:GetInvoicesRequest>
      <shar:wsVersion>1.0.0</shar:wsVersion>
      <shar:id>SanMarUsername</shar:id>
      <shar:password>SanMarPassword</shar:password>
      <shar:queryType>3</shar:queryType>
      <shar:requestedDate>2020-10-25</shar:requestedDate>
    </ns:GetInvoicesRequest>
  </soapenv:Body>
</soapenv:Envelope>
```

queryType 4: Search Invoices by Requested Date. This will retrieve all invoice data invoiced after the date queried in the availableTimeStamp field:

```
<soapenv:Envelope xmlns:soapenv="http://schemas.xmlsoap.org/soap/envelope/"
xmlns:ns="http://www.promostandards.org/WSDL/Invoice/1.0.0/"
xmlns:shar="http://www.promostandards.org/WSDL/Invoice/1.0.0/SharedObjects/">
  <soapenv:Header/>
  <soapenv:Body>
    <ns:GetInvoicesRequest>
      <shar:wsVersion>1.0.0</shar:wsVersion>
      <shar:id>SanMarUsername</shar:id>
      <shar:password>SanMarPassword</shar:password>
      <shar:queryType>4</shar:queryType>
      <shar:availableTimeStamp>2020-11-09T00:00:00.00
      </shar:availableTimeStamp>
    </ns:GetInvoicesRequest>
  </soapenv:Body>
</soapenv:Envelope>
```


PromoStandards getInvoices V1.0.0 Service XML Request and Response Using queryType 2

The following example demonstrates an API request to the PromoStandards getInvoice method using queryType 2 for invoice number 123456798.

PromoStandards getInvoices V1.0.0 XML Request:

```
<soapenv:Envelope xmlns:soapenv="http://schemas.xmlsoap.org/soap/envelope/"
xmlns:ns="http://www.promostandards.org/WSDL/Invoice/1.0.0/"
xmlns:shar="http://www.promostandards.org/WSDL/Invoice/1.0.0/SharedObjects/">
  <soapenv:Header />
  <soapenv:Body>
    <ns:GetInvoicesRequest>
      <shar:wsVersion>1.0.0</shar:wsVersion>
      <shar:id>SanMarUsername</shar:id>
      <shar:password>SanMarPassword</shar:password>
      <shar:queryType>2</shar:queryType>
      <shar:referenceNumber>123456798</shar:referenceNumber>
    </ns:GetInvoicesRequest>
  </soapenv:Body>
</soapenv:Envelope>
```

PromoStandards getInvoices V1.0.0 XML Response

```
<S:Envelope xmlns:S="http://schemas.xmlsoap.org/soap/envelope/">
  <S:Body>
    <ns2:GetInvoicesResponse
xmlns="http://www.promostandards.org/WSDL/Invoice/1.0.0/SharedObjects/"
xmlns:ns2="http://www.promostandards.org/WSDL/Invoice/1.0.0/">
      <ns2:InvoiceArray>
        <ns2:Invoice>
          <invoiceNumber>123456798</invoiceNumber>
          <invoiceType>Invoice</invoiceType>
          <invoiceDate>2021-03-24</invoiceDate>
          <purchaseOrderNumber>112233445</purchaseOrderNumber>
          <ns2:BillTo>
            <AccountInfo>
              <accountName>TestAccount</accountName>
              <accountNumber>12345</accountNumber>
              <Address1>Testaddress</Address1>
              <Address2>STE A</Address2>
              <city>Seattle</city>
              <region>WA</region>
            </AccountInfo>
          </ns2:BillTo>
          <ns2:SoldTo>
            <AccountInfo>
              <accountName>TestAccount</accountName>
              <accountNumber>12345</accountNumber>
              <Address1>Testaddress</Address1>
              <Address2>STE A</Address2>
              <city>Seattle</city>
              <region>WA</region>
            </AccountInfo>
          </ns2:SoldTo>
        </ns2:Invoice>
      </ns2:InvoiceArray>
    </ns2:GetInvoicesResponse>
  </S:Body>
</S:Envelope>
```

PromoStandards getInvoices V1.0.0 XML Response Continued

```
</ns2:SoldTo>
<paymentDueDate>2021-04-24</paymentDueDate>
<currency>USD</currency>
<salesAmount>15.67</salesAmount>
<shippingAmount>0.0</shippingAmount>
<handlingAmount>0.0</handlingAmount>
<taxAmount>0.00</taxAmount>
<invoiceAmount>15.67</invoiceAmount>
<advancePaymentAmount>0.00</advancePaymentAmount>
<invoiceAmountDue>15.67</invoiceAmountDue>
<ns2:InvoiceLineItemsArray>
  <InvoiceLineItem>
    <productId>ST860</productId>
    <partId>1019704</partId>
    <invoiceQuantity>1</invoiceQuantity>
    <quantityUOM>EA</quantityUOM>
    <lineItemDescription>ST Sport-Wick Textured 1/4-Zip
      Pullover</lineItemDescription>
    <unitPrice>15.67</unitPrice>
    <extendedPrice>15.67</extendedPrice>
  </InvoiceLineItem>
</ns2:InvoiceLineItemsArray>
<ns2:SalesOrderNumbersArray>
  <salesOrderNumber>12345123</salesOrderNumber>
</ns2:SalesOrderNumbersArray>
</ns2:Invoice>
</ns2:InvoiceArray>
</ns2:GetInvoicesResponse>
</S:Body>
</S:Envelope>
```

SanMar License Plate Number Service

EDEV: <https://edev-ws.sanmar.com:8080/SanMarWebService/webservices/PackingSlipService?wsdl>

PRODUCTION: <https://ws.sanmar.com:8080/SanMarWebService/webservices/PackingSlipService?wsdl>

There is one function available for this web service.

GetPackingSlip

Sample License Plate Number Label

Label 1 (Left):

SalesOrder#:SO-129581167
PIC-0876079673 Box: 1/1 44
LP0092871737
PO: Jul 27 IPG Online Inno LTL
G PROMOS

6 LBS 1 OF 1
PORT AUTHORITY (775) 266-7710
PORT AUTHORITY 450 INGENUITY AVE SPARKS NV 89441 DWT: 24,19,4

SHIP TO: (714) 578-5080 LOGOWEAR STE 181 3305 E MURALOMA AVE ANAHEIM CA 92806-1934

CA 927 9-03

UPS GROUND TRACKING #: 1Z 208 00A 03 2977 0107

BILLING TO: IPG ONLINE INNO LTL
SHIP TO: IPG ONLINE INNO LTL
REF: LP0092871737

WELA 000 BLUAT 2100L 01.0V 01000

LPN

Label 2 (Right):

SalesOrder#:SO-129581167
PIC-0876079673 Box: 1/1 44
LP0092871737
PO: Jul 27 IPG Online Inno LTL
G PROMOS

6 LBS 1 OF 1
PORT AUTHORITY (775) 266-7710
PORT AUTHORITY 450 INGENUITY AVE SPARKS NV 89441 DWT: 24,19,4

SHIP TO: (714) 578-5080 LOGOWEAR STE 181 3305 E MURALOMA AVE ANAHEIM CA 92806-1934

CA 927 9-03

UPS GROUND TRACKING #: 1Z 208 00A 03 2977 0107

BILLING TO: IPG ONLINE INNO LTL
SHIP TO: IPG ONLINE INNO LTL
REF: LP0092871737

WELA 000 BLUAT 2100L 01.0V 01000

LPN

SanMar GetPackingSlip Service

This service returns packing slip information for each package when the associated LPN barcode at the bottom of the shipping label is scanned.

Decorator Guidance: Packing Slip Calls submitted by a receiving decorator account credentials will result in a successful return if the Ship-To-Address matches the Account Address for the Decorator. Addresses that do not match will result in an 'Data Not Found' Message when submitted by the decorator account.

SanMar GetPackingSlip Request Parameters

Field	Description	Example	Required	Type	Max Chars
wsVersion	Web Service Version	1.0.0	Yes	STRING	64
Userid	SanMar.com Username	SanMarUsername	Yes	STRING	64
Password	SanMar.com Password	SanMarPassword	Yes	STRING	64
PackingSlipId	LPN Number		Yes		

SanMar GetPackingSlip Service XML Request

```
<soapenv:Envelope xmlns:soapenv="http://schemas.xmlsoap.org/soap/envelope/"
xmlns:pac="http://ws.sanmar.com/webservices/PackingSlip">
  <soapenv:Header />
  <soapenv:Body>
    <pac:GetPackingSlip>
      <pac:wsVersion>1.0.0</pac:wsVersion>
      <pac:UserId>SanMarUsername</pac:UserId>
      <pac>Password>SanMarPassword</pac>Password>
      <pac:PackingSlipId>LP000123456789</pac:PackingSlipId>
    </pac:GetPackingSlip>
  </soapenv:Body>
</soapenv:Envelope>
```

SanMar GetPackingSlip Service XML Response

Please note: The ShipmentUnitIndex is the box number, and the items within that box will be part of the response.

```
<S:Envelope xmlns:S="http://schemas.xmlsoap.org/soap/envelope/">
  <S:Body>
    <GetPackingSlipResponse xmlns="http://ws.sanmar.com/webservices/PackingSlip">
      <PackingSlip id="LP000123456789">
        <Header>
          <ShipmentDate>2020-06-30</ShipmentDate>
          <ShipmentUnitIndex>1</ShipmentUnitIndex>
          <ShipmentUnitQuantity>1</ShipmentUnitQuantity>
          <OrderDate>2020-05-13</OrderDate>
          <OrderNumber>1234567</OrderNumber>
          <InvoiceNumber>1234567</InvoiceNumber>
          <PurchaseOrderReference>LPNEXAMPLE</PurchaseOrderReference>
          <ShipFrom>
            <Name>SanMar</Name>
            <Address>
              <Line1>1914 BILLING ST</Line1>
              <CityName>ISSAQUAH</CityName>
              <StateCode>WA</StateCode>
              <PostalCode>98027</PostalCode>
              <CountryCode>US</CountryCode>
              <IsResidential>>true</IsResidential>
            </Address>
          </ShipFrom>
          <ShipTo>
            <Name>SanMarLPN</Name>
            <Address>
              <Line1>1914 BILLING ST</Line1>
              <Line2>1</Line2>
              <CityName>PRESTON</CityName>
              <StateCode>WA</StateCode>
              <PostalCode>98050</PostalCode>
              <CountryCode>US</CountryCode>
              <IsResidential>>true</IsResidential>
            </Address>
          </ShipTo>
          <BillTo>
            <Name>SanMarLPN</Name>
            <Address>
              <Line1>1914 BILLING ST</Line1>
              <CityName>PRESTON</CityName>
              <StateCode>WA</StateCode>
              <PostalCode>98050</PostalCode>
              <CountryCode>US</CountryCode>
              <IsResidential>>true</IsResidential>
            </Address>
          </BillTo>
          <Weight uom="lb">0.64</Weight>
          <Carrier>
            <Name>UPS</Name>
            <ShippingMethod>GROUND</ShippingMethod>
            <TrackingId>1Z12345678912345</TrackingId>
          </Carrier>
        </PackingSlip>
      </GetPackingSlipResponse>
    </S:Body>
  </S:Envelope>
```

SanMar GetPackingSlip Service XML Response Continued

```
</Carrier>
</Header>
<Body>
  <Item id="1">
    <SkuId>175762</SkuId>
    <StyleNo>PC61</StyleNo>
    <Description>PC Essential Tee</Description>
    <Color>Aquatic Blue</Color>
    <Size>S</Size>
    <Quantity>1</Quantity>
    <GTIN>00191265001373</GTIN>
  </Item>
  <Item id="2">
    <SkuId>176181</SkuId>
    <StyleNo>PC61Y</StyleNo>
    <Description>PC Yth Essential Tee</Description>
    <Color>Aquatic Blue</Color>
    <Size>XS</Size>
    <Quantity>1</Quantity>
    <GTIN>00191265072397</GTIN>
  </Item>
</Body>
</PackingSlip>
</GetPackingSlipResponse>
</S:Body>
</S:Envelope>
```

Change Log

September 2024

- Formatting updates to Customer # / Username / Password and Timestamp Fields.

August 2024

- Removed PromoStandards Order Status Service V1.0.0

July 2024

- Added support for VA Warehouse (31)
- Updated Brand Restrictions

April 2024

- Added PromoStandards GetOrderStatus Version V2.0.0
- Updated Brand Restrictions

June 2023

- Formatting Updates to Example Calls.
- Updated Brand Restrictions and GetProductInfoByBrand Tables.
- Updated Edev Guidance.
- Updated Decorator Guidance for GetPackingSlip Service.

December 2022

- Update to GetOrderShipment Notification Query Type 2.
- Update to GetInventoryByStyleColorSize call allowing Submittal by Style, Style/Color and Style/Size.
- Updated Brand Restrictions and GetProductInfoByBrand Tables.
- Updated GetMediaCall documentation, SanMar only supports Document / Image calls.

August 2022

- Added Testing Recommendations
- Updated LPN Response Information with added fields
- Updated Brand Restrictions and GetProductInfoByBrand Tables
- Updated PS Inventory 2.0 Part Array Query

May 2022

- Added Best Practices section
- Updated table of contents

January 2022

- Updated all EUAT WSDL's to EDEV WSDL's
- Corrected Production and EDEV LPN WSDL's
- Updated the sample license plate number label image

April 2021

- Rewrote the following user guide items: SanMar Web Services Overview, Get Started, Authentication, Make a Soap Call, Make a Soap Call Using SoapUI, Errors, Web Service Data Usage.
- Added a PHP quick start guide
- Updated the web service API parameter tables and descriptions
- Added brand WonderWink

March 2021

- Added Brands; Next Level, TravisMathew
- Updated SanMar Product Information by Category & Brand

December 2020

- Added the PromoStandard Product data and Invoice services
- Added revised xml responses for Promostandard product data and media services.

July 2020 - Added PromoStandard Inventory 2.0.0 Final service

May 2020

- Added Brands; Carhartt, Champion, Comfort Colors & American Apparel
- Added web services usage recommendations page 2
- Updated productInfo responses and add notes regarding removal of piece pricing
- Updated all UAT environment WSDL endpoints to eUAT environment endpoints
- Added LPN ShipmentUnitIndex box# details

May 2019 - Added PromoStandards Order Status Service

March 2019 - Added PromoStandards Media Content Service

January 2019

- Corrected getPricing from text in the getOrdernotification and getInvoice services
- Removed Brand: District Made
- Added Brand: Carhartt
- Corrected the link for the Promostandard Order Shipment Notification on the testing page
- Added PromoStandards Prodct Pricing and Configuration Service
- Removed PromoStandards validation page testing information (not supported)

September 2018 - Corrected table of contents page numbers

August 2018

- Added PromoStandards Inventory Version 2.0
- Corrected PromoStandards validation page link

July 2018

- Removed web service access IP restriction
- Added Brand: Bella+Canvas
- Corrected: product pricing info data fields to reflect Inventory key and size index
- Added TLS version 1.2 code information

April 2018

- Added the License Plate Number web services for high jump warehouses
- Updated SoapUI URL link

January 2018 - Corrected all UAT environment WSDL links from stage to UAT

December 2017

- Updated all links stage environment WSDLs from stage to uat for improved access and stability
- Updated Brands list for ProductInfo call
- Added PromoStandards Prodct Data Service

October 2017

- Updated links to sanmar.com
- Updated Brand Restriction information
- Added the North Face to Brand Restrictions
- Added Rabbit Skins to Brand Restrictions

April 2017 - Added PromoStandard Order Shipment Notification